



Movement holder
Removing setting stem
H ZXX.1T



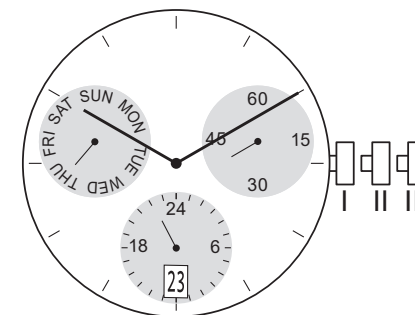
Movement holder
Setting hands
H ZXX.2A

Fitting dial and hands

- Crown in position III
- Wind hour hand forward, until date changes
- Remove working hands
- Fit dial
- Place the hands of the hour, minute and second towards 12 o'clock
- Place de hand of the 24h hand towards 24 o'clock
- Set the hands forward towards 1:30 a.m.
- Set hand of the weekday at 12 o'clock
- Wind hands forward to set actual day of the week and time
- Crown in position II
- Set date
- Crown in position I

Date switching duration:

~1¼hrs



General Instructions

Removing the setting stem can only be effected in Pos. I.

The use of supporting screws at pos. 3h/6h and in the centre is essential when mounting the hands (no support possible at 9h!).

Permitted hand setting strengths:

Hr / min. hands: <40N

Other hands: <30N

During quick date correction (setting stem in position II), a date switching speed of 5 d/s must not be exceeded.

Complement for T2 instructions

It might be possible that the date jump will not be finalized when the date is set manually. In that case the movement will be adjusted automatically at the next date jump.