



Movement holder
Removing setting stem
H8XXX.1T



Movement holder
Setting hands
H8XXX.1A

Fitting dial and hands

- Crown in position III
- Wind hour hand forwards, until Sunday is displayed in the retrograde window
- Crown in position II
- Wind crown, until date 02 appears
- Crown in position III
- Wind hour hand forwards, until date changes to 03
- Remove working hand
- Fit dial
- Set retrograde hand on Sunday
- Point remaining hands towards 12 o'clock
- Advance time setting to install actual weekday
- Set time
- Zero chronograph hand*
- Crown in position II
- Set date
- Crown in position I

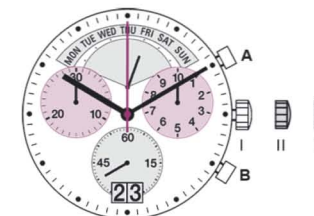
Date switching duration

First and tenth digit discs
Weekday

*Zeroing the Chronograph hand

- Press pushers A and B for 2 seconds at the same time
(Chrono seconds hand rotates once)
- Pusher A → to correct chrono seconds hand
- Pusher B → to jump to hour hand
- Pusher A → to correct hand position
- Pusher B → to jump to minute hand
- Pusher A → to correct minute hand

Details: See Instruction Manual



General Instructions

Removing the setting stem can only be effected in Pos. I.

The use of supporting screws is essential when mounting the hands.

Permitted hand setting strengths:

Hr / min. hands: <40N

Other hands: <30N

During quick date correction (setting stem in position II), a date switching speed of 5 d/s must not be exceeded.

~2hrs
~1½hrs