



**Movement holder**  
*Removing setting stem*  
 H6XXX.1T



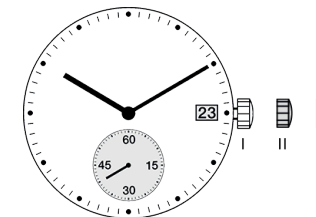
**Movement holder**  
*Setting hands*  
 H6XXX.1A2

**Fitting dial and hands**

- Crown in position III
- Wind hour hand forwards, until date changes
- Remove working hand
- Set friction spring 3315.001 on the hour wheel, if not yet in place
- Fit dial
- Point all hands towards 12 o'clock
- Set time
- Crown in position II
- Set date
- Crown in position I

**Date switching duration:**

~1¼hrs


**General Instructions**

*Removing the setting stem can only be effected in Pos. I.*

*The use of supporting screws is essential when mounting the hands.*

*Permitted hand setting strengths:*

*Hr / min. hands: <40N*

*Other hand: <30N*

*During quick date correction (setting stem in position II), a date switching speed of 5 d/s must not be exceeded.*