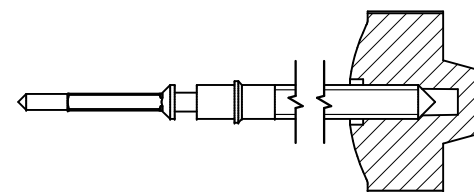


Tige de travail (intégrée dans le mouvement)  
 Arbeitstellwelle (im Werk eingebaut)  
 Working stem (implemented in the movement)

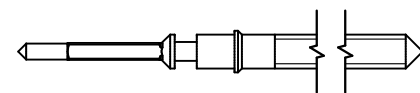
No. d'article Artikelnummer Part number	L	L1	L2	L3	S	D
3000.220.CO	16.49	8.79	22.795	7.89	0.90	1.50



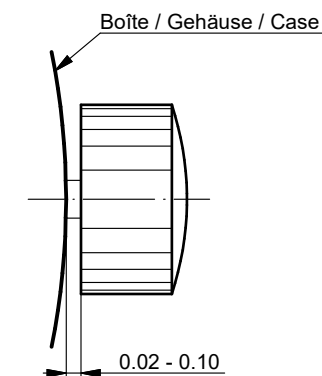
Couleur de la couronne Kronenfarbe Crown color	anthracite anthrazit anthracite
Code	UN 9017

Tige (normale) / Stellwelle (normal) / Stem (normal)

No. d'article Artikelnummer Part number	L	L1	L2	L3	S	D
3000.220	16.49	8.79	22.795	7.89	0.90	1.50



Couronne normale  
 Normale Krone  
 Normal crown

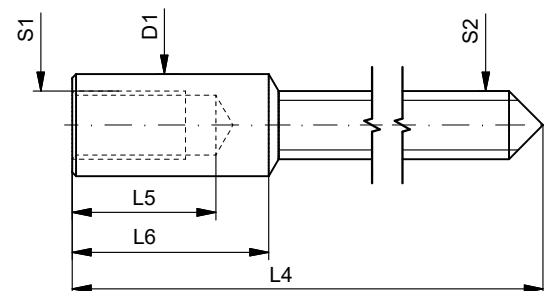


Couronne vissée  
 Geschraubte Krone  
 Screwed crown

Force ⇄ min. Kraft ⇄ min. Force ⇄ min.	10 N
Force ⇄ max. Kraft ⇄ max. Force ⇄ max.	15 N

Rallonge de tige / Stellwelle Verlängerung / Stem extension

No. d'article Artikelnummer Part number	L4	L5 (min)	L6	S1	S2	D1
3000.040	12.00	1.90	2.60	0.90	0.90	1.35



Tige (dimensions / forces)  
 Stellwelle (Dimensionen / Kräfte)  
 Stem (dimensions / forces)

RONDA R01-01, R01-02

Issued	27.02.2026
Modified	27.02.2026
Released	YES
Mod. No.	45812
Tolerance	---
Scale	---

Page 1 / 1 A3		
Sous réserve de modifications Aenderungen vorbehalten Modifications reserved		
No.	5030.056	00