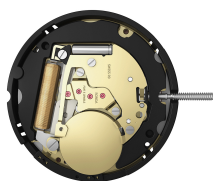


Solar Quartz Movements

Classic Functions

RONDA solartech

Caliber 214 – 11½"



Product Specifications

Analog quartz movement

Line solartech

Caliber 214

Size 11½"

Version Swiss Made 5 Jewels / gold plated

Battery running time 8 months, fully charged, without exposure to light

Standard hand fitting height 1

Features

- Quick start function: 1 minute sun exposure
- Rechargeable secondary battery
- Power saving mechanism with pulled out stem: Reduction of consumption approximately 70%

Functions

- Solar quartz movement
- Date
- 2 hands

Solar Quartz Movements

Classic Functions

RONDA solartech

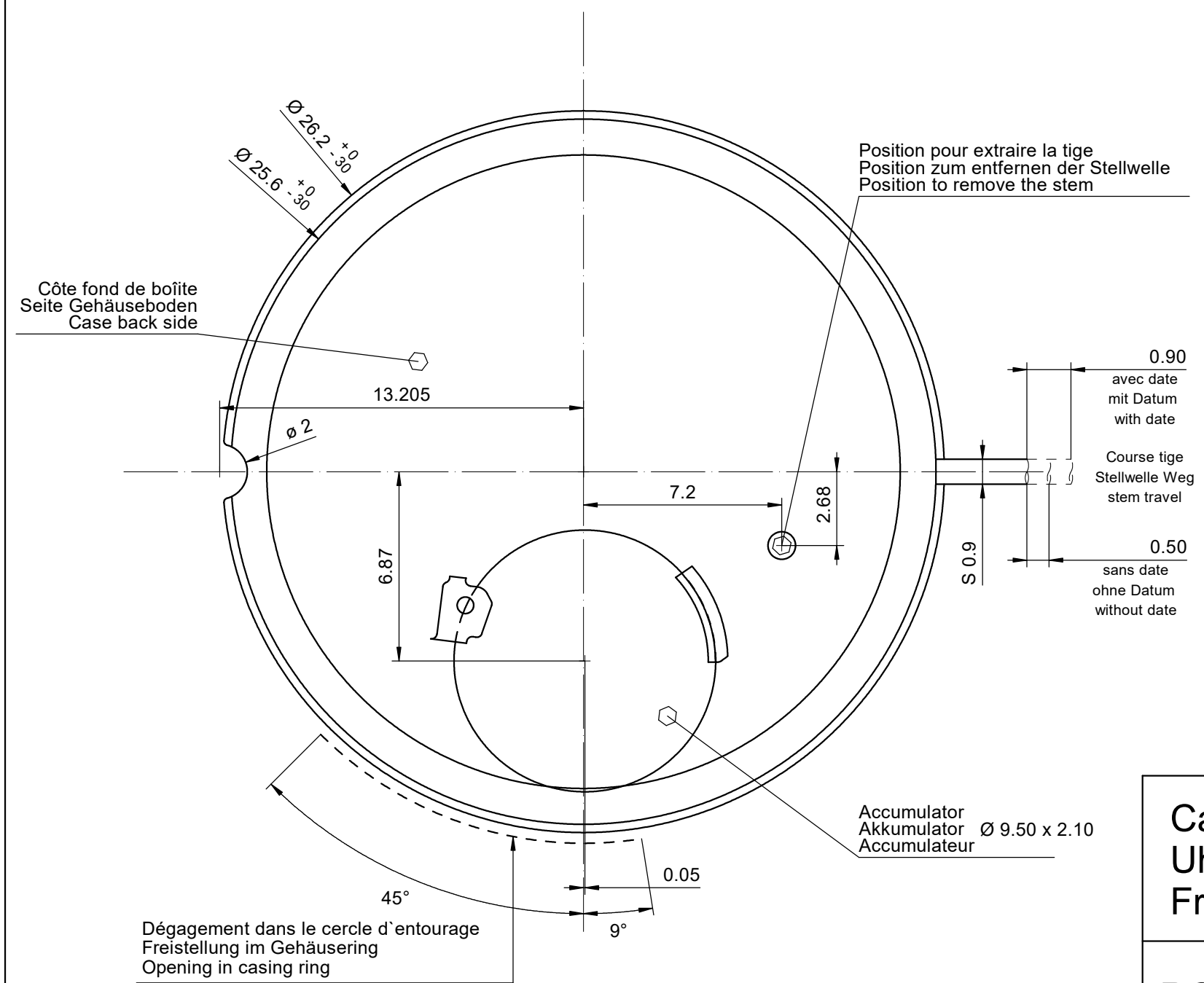
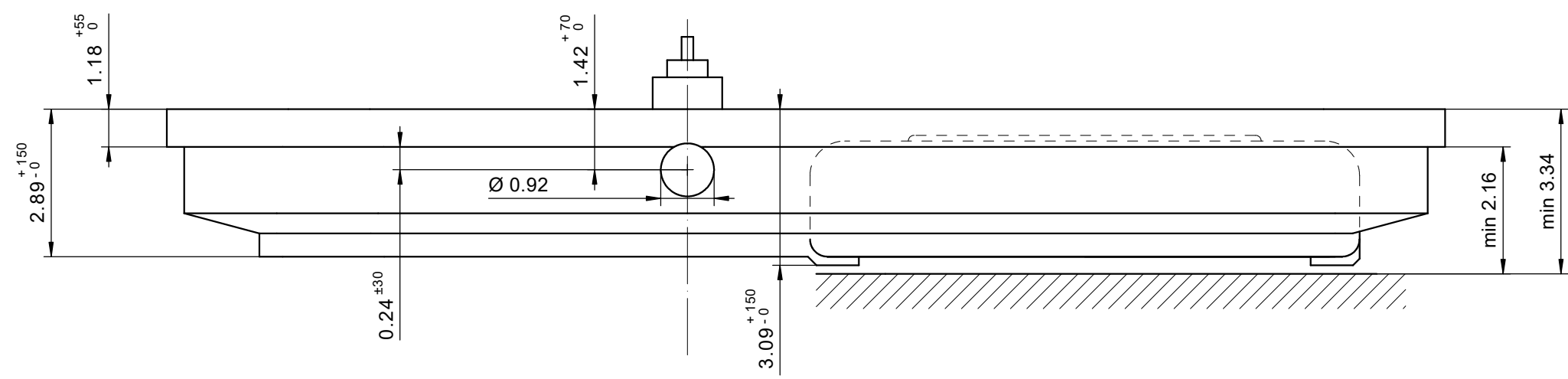
Caliber 214 – 11½"

Technical Specifications

Diameter Total	26.00 mm
Case fitting	25.60 mm
Movement height	2.89 mm
Height over secondary battery	3.09 mm
Movement rest	1.18 mm
Height over stem	1.42 mm
Length of stem travel	0.90 mm
Stem thread	0.90 mm
Useful torque second – typical	8 µNm
Useful torque minute – typical	400 µNm
Operating temperature	0 - 50 °C
Instantaneous rate	-10 / +20 sec/month
Resistance to magnetic fields	18.8 Oe
Resistance against shock	NIHS 91-10

Battery Specifications

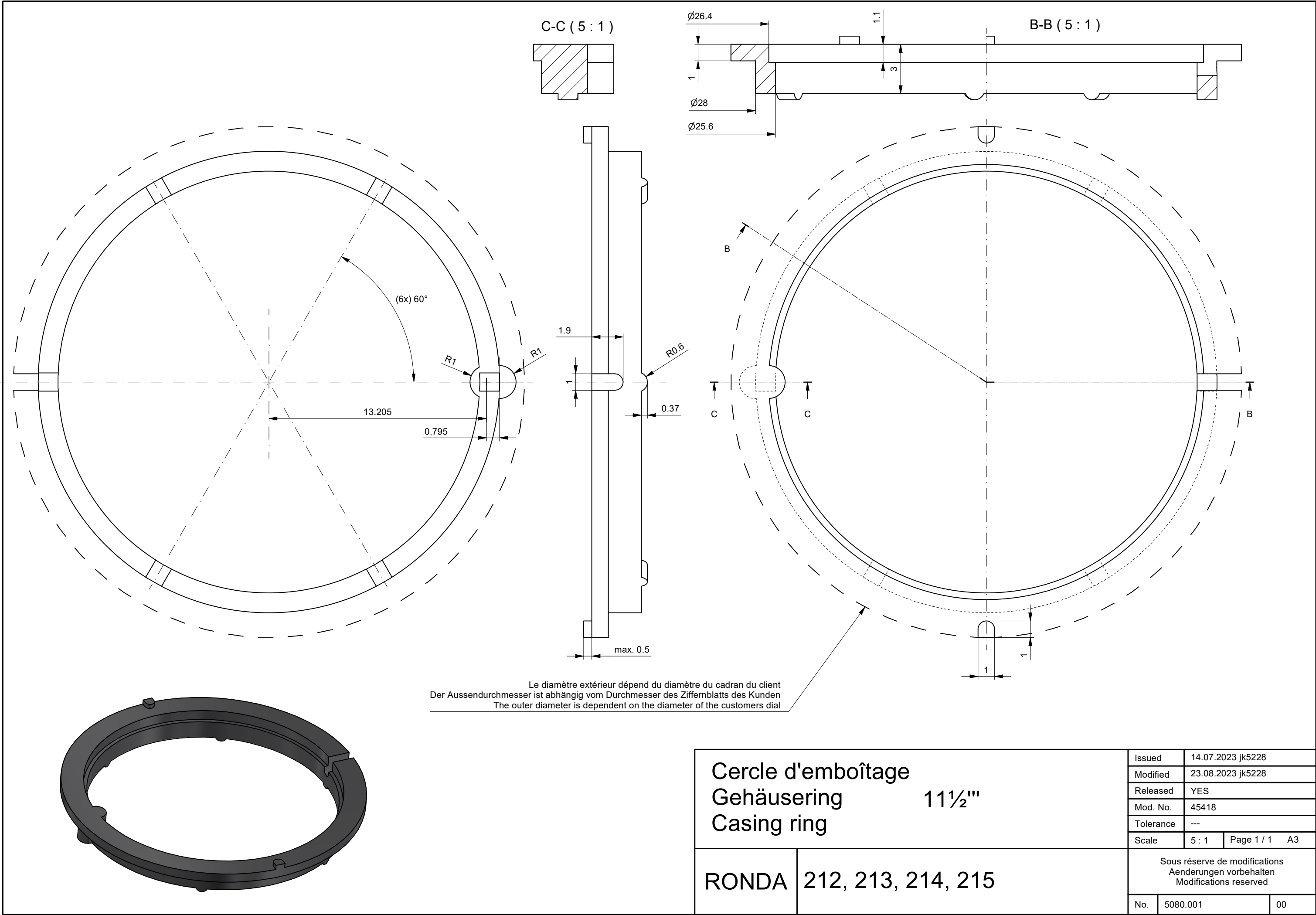
Rechargeable battery type	MT920 - Ø 9.50 x 2.00 mm
Battery running time	8 months, fully charged, without exposure to light
Battery replaceability	Yes
Battery voltage	1.5 V
Current consumption – typical	0.96 µA
Current consumption – maximum	1.35 µA



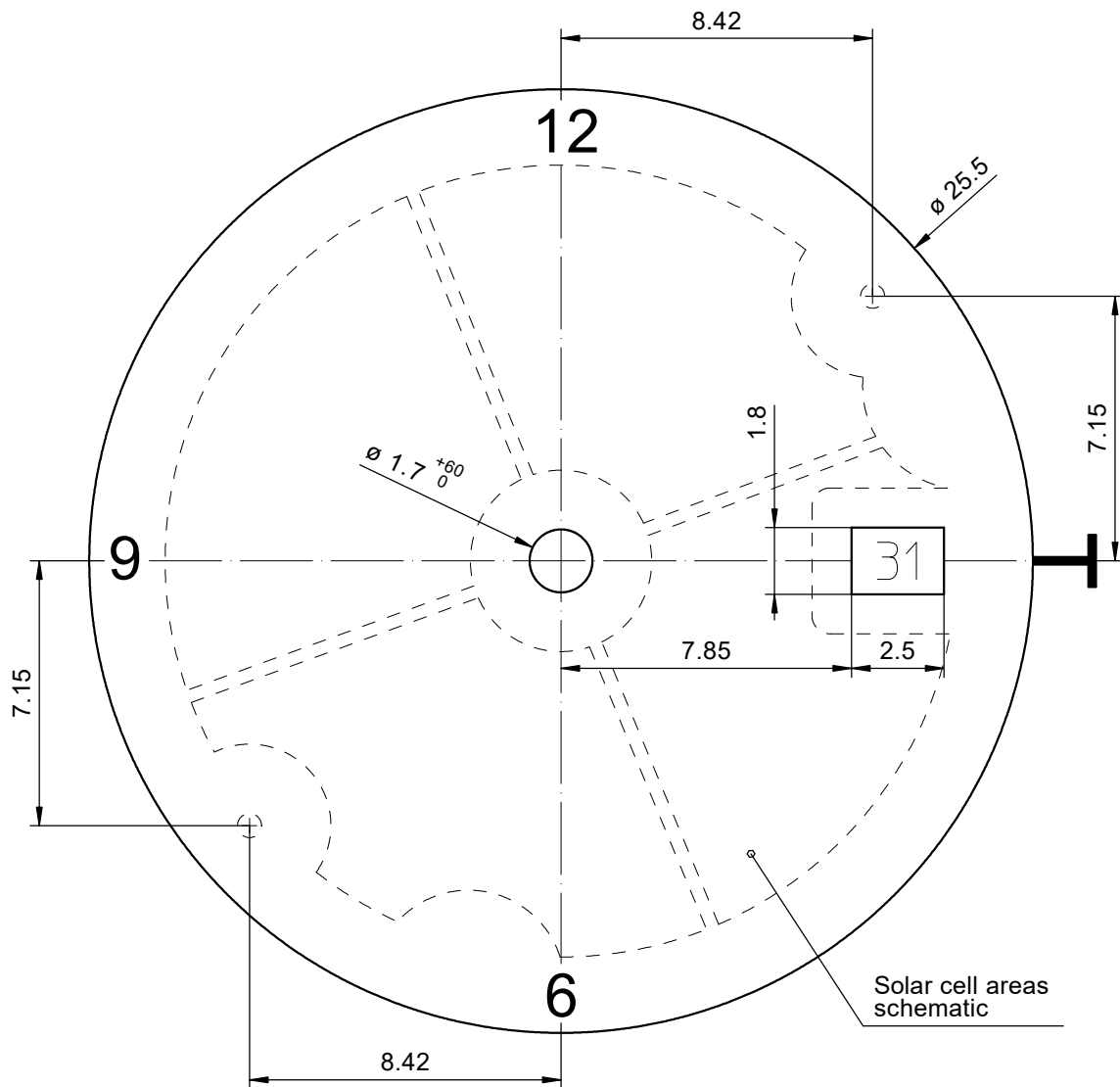
Sécurité entre aiguille seconde et verre : min 0.30 mm
Sicherheit zwischen Sekundenzeiger und Glas : min 0.30 mm
Security between second hand and glass : min 0.30 mm

Le cadran doit être maintenu en hauteur par la boîte.
Das Zifferblatt muss in der Höhe vom Gehäuse festgehalten werden.
The dial must be held in the height by the case.

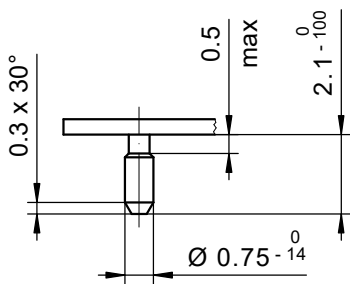
Cage Uhrwerkgestell 11½" Frame		Issued		12.10.2022	aj5216
		Modified		03.05.2023	fl5223
		Released		Yes	
		Mod. No.		45418	
		Tolerance		±20 µm	
		Scale		5 : 1	Page 1/1 A3
RONDA	212, 213, 214, 215	Sous réserve de modifications Aenderungen vorbehalten Modifications reserved			
		No.	5000.461		01



Cercle d'emboîtage Gehäusering 11½" Casing ring			Issued	14.07.2023 jk5228		
			Modified	23.08.2023 jk5228		
			Released	YES		
			Mod. No.	45418		
			Tolerance	---		
			Scale	5 : 1	Page 1 / 1	A3
RONDA	212, 213, 214, 215		Sous réserve de modifications Änderungen vorbehalten Modifications reserved			
			No.	5080.001		00



Solar cell areas schematic



Dial 25% - 40% transparency

Tige	Date
Stellw.	Datum
Stem	Date
3H	3H

Epaisseur du cadran selon hauteur de l'aiguillage
Zifferblattdicke gemäss Zeigerwerkhöhen
Dial thickness according to hand fitting heights

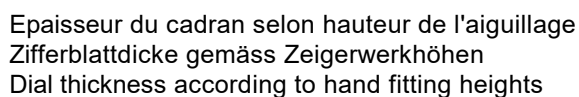
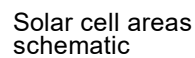
Cadran
Zifferblatt 11 1/2"
Dial

Issued	03.10.2022	aj5216
Modified	24.10.2023	dh5221
Released	Yes	
Mod. No.	45418	
Tolerance	±20 µm	
Scale	5 : 1	Page 1/1 A4

RONDA 214, 215

Sous réserve de modifications
Änderungen vorbehalten
Modifications reserved

No. 5010.856 01



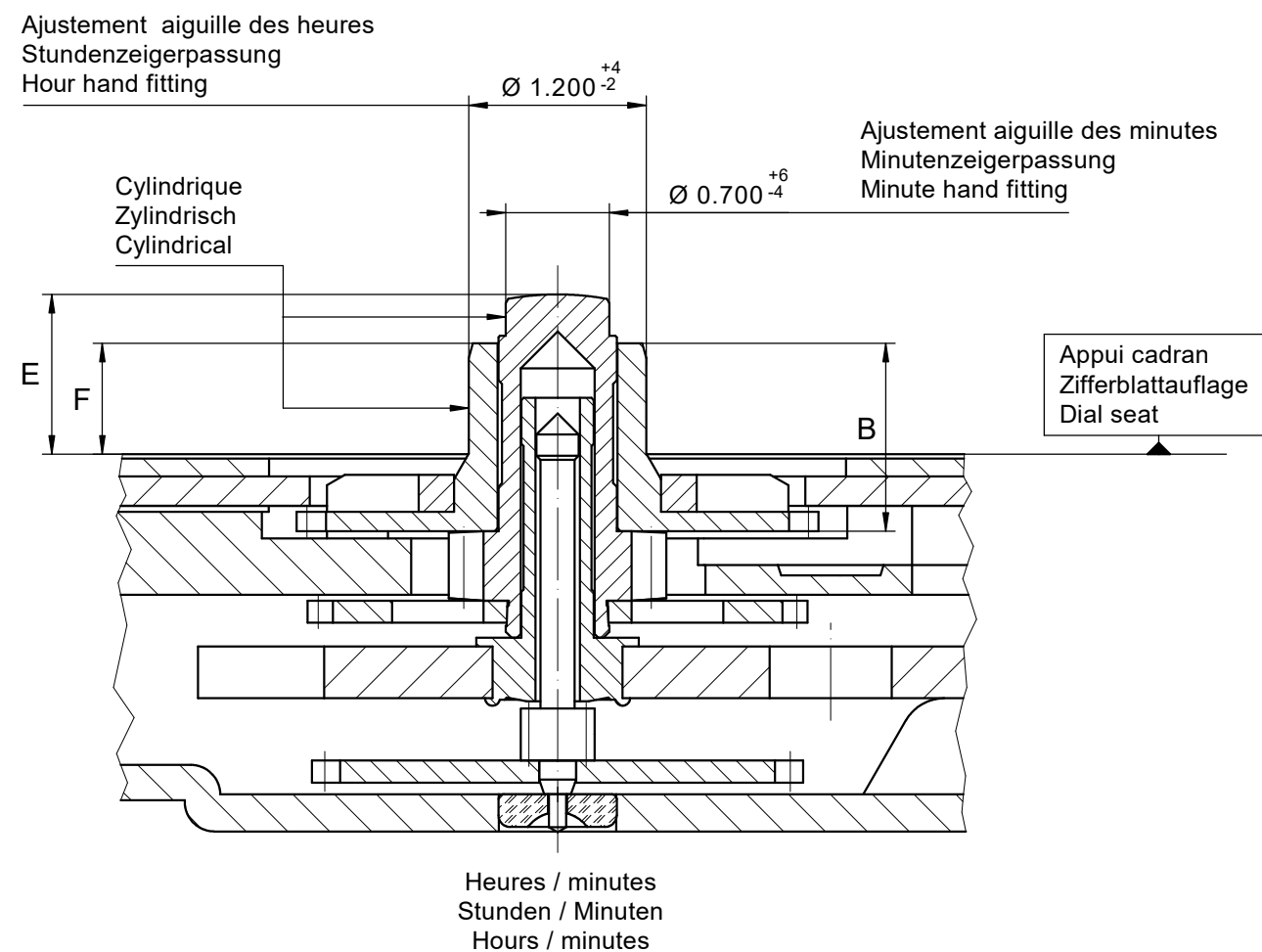
Tige	Date
Stellw.	Datum
Stem	Date
3H	6H
	<input type="text"/>

Cadran
Zifferblatt 11½"
Dial

Sous réserve de modifications
Änderungen vorbehalten
Modifications reserved

RONDA 214, 215

No.	5010.859	00
-----	----------	----



		Aig. des minutes Minutenzeiger Minute hand	Aig. des heures Stundenzeiger Hour hand	Lors de la pose d'aiguilles, le mouvement doit être soutenu. Beim Zeigersetzen muss das Werk abgestützt werden. The movement needs to be supported for hand setting.
mg	max.	30	30	Masse / Masse / Weight *
µNm	max.	0.70	0.70	Balourd / Unwucht / Unbalance *
gmm ²	max.	-	-	Inertie / Massenträgheit / Inertia *
N	max.	40	40	Force de chassage / Aufpresskraft / Force

Aiguillage no Zeigerwerkhöhe Nr. Hand fitting height No	Dépassement Höhe über Zifferblattauflage Height over dial seat			Longueur Länge Length		Epaisseur max. (peinture comprise) Max. Dicke (inkl. Farbe) Max. thickness (paint included)			
	Chaussée Minutenrohr Cannon-pinion	Roue des heures Stundenrad Hour wheel		Roue des heures Stundenrad Hour wheel		Cadran Zifferblatt Dial			Aiguilles Zeiger Hands
						Sous l'aiguille des minutes Unter Minutenzeiger Under minute hand	Sous l'aiguille des heures Unter Stundenzeiger Under hour hand		
1	E	F		B		0.76	0.56		0.15

Aiguillages
Zeigerwerkhöhen
Hand fitting heights

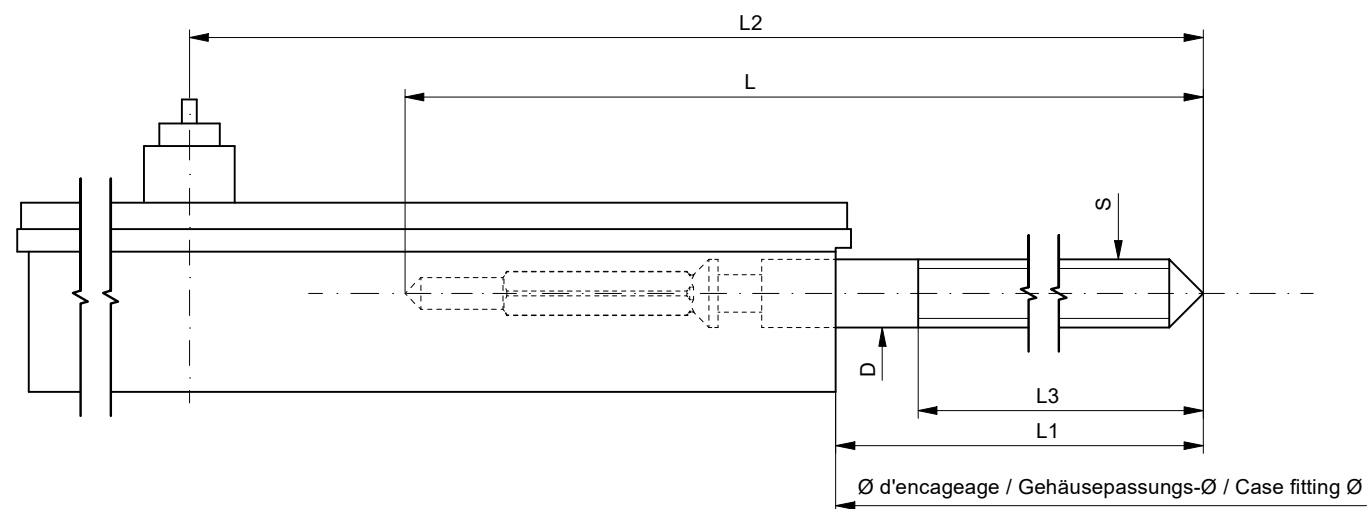
11½"

RONDA 214

Issued	14.04.2023	f15223
Modified	24.04.2023	f15223
Released	YES	
Mod. No.	45418	
Tolerance	---	
Scale	20 : 1	Page 1/1 A3

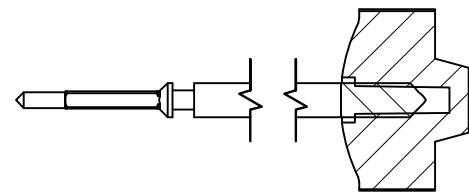
Sous réserve de modifications
Änderungen vorbehalten
Modifications reserved

No.	3316.205	01
-----	----------	----



Tige de travail (intégrée dans le mouvement)
Arbeitsstellwelle (im Werk eingebaut)
Working stem (implemented in the movement)

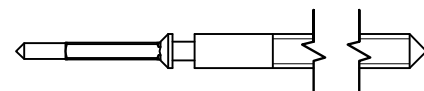
No. d'article Artikelnummer Part number	L	L1	L2	L3	S	D
3000.155.CO	20.24	10.11	22.91	9.82	0.90	0.90



Couleur de la couronne Kronenfarbe Crown color	rose foncé dunkelrosa dark pink
Code	FK 23.168

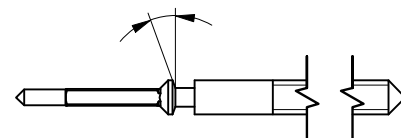
Tige (normale) / Stellwelle (normal) / Stem (normal)

No. d'article Artikelnummer Part number	L	L1	L2	L3	S	D
3000.155	20.24	10.11	22.91	9.82	0.90	0.90
3000.158	25.00	14.87	27.67	14.58	0.90	0.90
3000.138	32.00	21.87	34.67	20.28	0.90	0.90



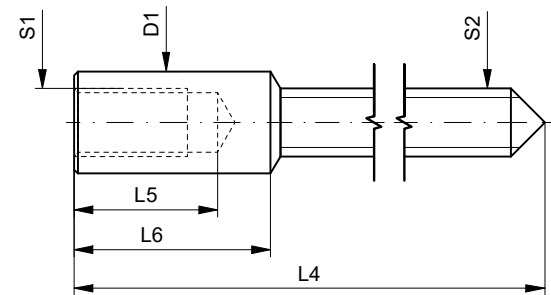
Tige (à arracher)
Stellwelle (Ausreissversion)
Stem (extractable version)

No. d'article Artikelnummer Part number	L	L1	L2	L3	S	D
3000.157	32.00	21.87	34.67	21.58	0.90	0.90



Rallonge de tige / Stellwelle Verlängerung / Stem extension

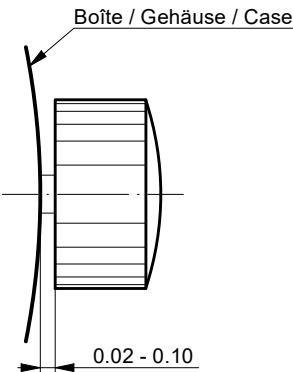
No. d'article Artikelnummer Part number	L4	L5 (min)	L6	S1	S2	D1
3000.040	12.00	1.90	2.60	0.90	0.90	1.35



Tige (dimensions / forces)
Stellwelle (Dimensionen / Kräfte)
Stem (dimensions / forces)

RONDA 212, 213, 214, 215

Couronne normale
Normale Krone
Normal crown



Couronne vissée
Geschraubte Krone
Screwed crown

Force ⇄ min. Kraft ⇄ min. Force ⇄ min.	10 N
Force ⇄ max. Kraft ⇄ max. Force ⇄ max.	15 N

Issued	27.04.2023	f15223
Modified	27.04.2023	f15223
Released	YES	
Mod. No.	45418	
Tolerance	---	
Scale	---	Page 1 / 1 A3

Sous réserve de modifications
Änderungen vorbehalten
Modifications reserved

No.	5030.055	00
-----	----------	----



Movement holder
Removing setting stem
H21X.1T



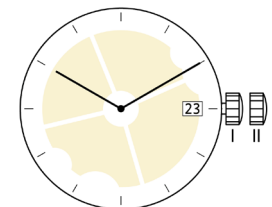
Movement holder
Setting hands
H71X.1A

Fitting dial and hand

- Crown in position III
- Wind hour hand forward, until date changes
- Remove working hand
- Put friction spring 3315.020 on the hour wheel
- Fit dial
- Set every hand towards 12 o'clock
- Set time
- Pull crown in position II
- Set calendar function
- Push crown in position I

Date switching time:

~ 1¼ h



General instructions

Removing the setting stem can only be effected in position I.

The use of supporting screws is essential when mounting the hands.

Permitted hand setting forces:

Hr. / minute hand: <40N / <40N

During quick date correction (setting stem in position II), a date switching speed of 5 d/s must not be exceeded.

This movement contains a rechargeable battery that is charged via the solar cell. Only batteries specified by RONDA may be used. Under no circumstances may a silver oxide battery or any other conventional watch battery be used.

A LED is built in as overvoltage protection. This lights up as soon as the battery cannot absorb all the energy of the solar cell or no battery is inserted.

Attention:

The movement is equipped with a solar cell on the dial side. Careful handling is therefore essential. Scratches or contact with any liquids can cause irreparable damage to the solar cell. Direct pressure on the plastic ring as well as on the electronics attached to it must be avoided. This can impair or damage the solar function.

User's Manual English
Movements Caliber

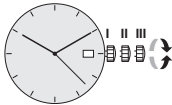
RONDA solartech

- 212
- 213
- 214
- 215

You have decided to buy a watch, which was assembled by a watchmaker using a Ronda movement. Please note that no watches are produced or distributed under the Ronda brand.

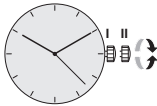
In case of repairs, guarantee claims and questions concerning the functioning of a watch, purchasers and consumers should contact their retailer or the watch manufacturer, for which the relevant information can be found in the sales or guarantee documentation provided with the watch.

- Kal. 214
- Kal. 215



- Pos. I Position of rest** (watch running)
- Pos. II Quick-change correction for date**
The date can also be corrected during the day-changing phase between 10 pm and midnight. The date of the following day has to be set, because no automatic date change takes place at midnight.
- Pull the crown out to position II (watch still running).
 - Turn the crown clockwise until the required date appears.
 - Push the crown back into position I.
- Pos. III Setting the time**
- Pull the crown out to position III (watch stopped).
 - Turn the crown, until the current time is displayed (remember the 24-hour cycle).
 - Push the crown back into position I.

- Kal. 212
- Kal. 213



- Pos. I Position of rest** (watch running)
- Pos. II Setting the time**
- Pull the crown out to position II (watch stopped).
 - Turn the crown, until the current time is displayed (remember the 24-hour cycle).
 - Push the crown back into position I.

Function of a solar quartz movement

Ronda Solartech movements draw the electrical energy required for operation from a rechargeable battery. This eliminates the need to regularly change a battery.

The battery is charged by incident light from a solar cell located under the dial. To do this, the watch with the dial up is exposed to direct light.

Cal. 212 / 213 / 214 / 215:
Rechargeable battery type: MT920 (Panasonic) Akku
Precision: +20/-10 seconds per month

Features

Quick start function:
When the battery is empty, the movement starts within a few minutes after the watch is exposed to sunlight.

Battery protection mode:
As soon as the battery reaches a very low state of charge, switching off the movement prevents deep discharge of the battery. This protects the battery, ensuring a long service life.

Battery overcharge protection:
This prevents the battery from overcharging and thus impairing the function of the movement.

Battery performance and charging

The running time of the movement after fully charging the battery is approximately 8 months.

For optimum performance, RONDA recommends charging the battery regularly with an adequate light source; this is done most quickly in direct sunlight.

WARNING: Avoid high temperatures of more than 60 °C (e.g. under an incandescent or halogen lamp, behind glass, etc.) to prevent malfunction.

Environment	Approximate charging time depending on light source *		
	Day charge	until the movement runs when the battery is empty	until fully charged when the battery is empty
Outdoors (sunny)	2 minutes	1 minute	7 hours
Outdoors (cloudy)	11 minutes	5 minutes	1.5 days
20 cm from a fluorescent lamp (30 W)	35 minutes	20 minutes	5.2 days
Indoor lighting	4.4 hours	2 hours	40 days

** based on a light transmission of the dial of 30%.*

Day charge: Time needed to charge the battery so that the movement runs for one day.

Until the movement runs when the battery is empty: Time needed to charge the battery to the point where the movement starts running when the battery is discharged.

Until fully charged when the battery is empty: Time required to fully charge an empty battery.

Replacing the battery

Solartech movements are equipped with a special rechargeable battery that does not require regular replacement, so it should not be removed from the movement.

If it is necessary to replace the battery, it is essential to ensure that only a battery approved by RONDA for this movement is used. The replacement must be carried out by a specialist dealer and the old battery must be disposed of properly.

WARNING: The use of a different type of battery or a conventional silver oxide battery may damage the movement and endanger the wearer.

Recommendation for storage

Avoid storing the solar watch with an empty battery for long periods in the dark. This is important to ensure a long battery life.

If the watch is not going to be worn for a long period of time, it is recommended that it be stored openly in a bright room. This ensures that the solar watch runs without having to be charged before wearing.

By pulling the stem to the outermost position (energy-saving mode), the power consumption can be reduced by about 70%, which further extends the life of the battery.

For movements with a calendar this corresponds to position III, for models without a calendar to position II.