

Caliber X30 – 13¼"



Product Specifications

Analog quartz movement

Line	xtratech
Caliber	X30
Size	13¼"
Version Swiss Made	0 Jewels / nickel plated
Version Swiss Parts	0 Jewels / nickel plated
Standard battery life	60 months
Standard hand fitting height	1

Features

- Correction day and date via stem
- Very long battery life
- Repairable movement with metal main plate and bridges
- Power saving mechanism with pulled out stem:
Reduction of consumption approximately 70%

Functions

- Multifunction
- Day indicator
- Small second
- 24 hours
- Date
- 2 hands

Quartz Movements

Multifunctions

RONDA xtratech

Caliber X30 – 13¼"

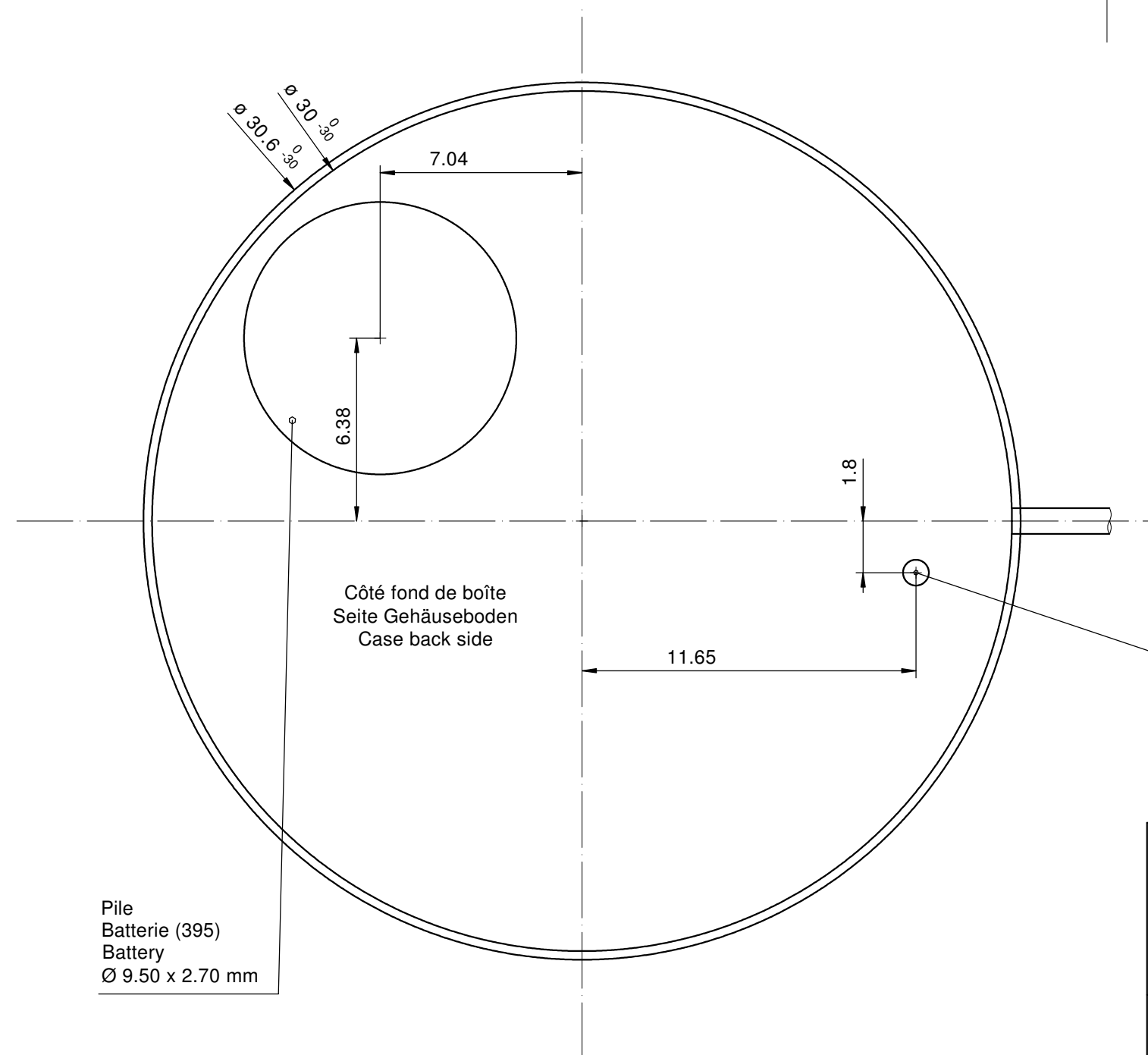
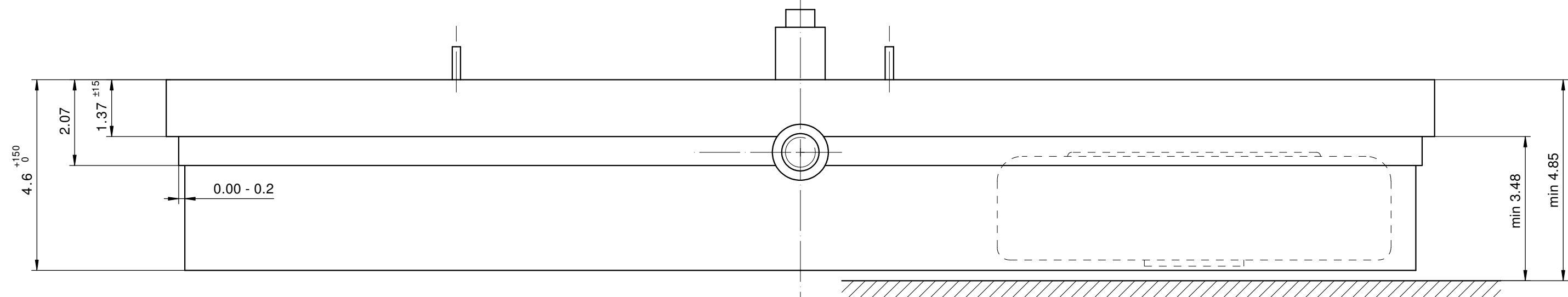
Technical Specifications

Diameter Total	30.60 mm
Case fitting	30.00 mm
Movement height	4.60 mm
Height over standard battery	4.60 mm
Movement rest	1.37 mm
Height over stem	1.75 mm
Length of stem travel	1.00 mm
Stem thread	0.90 mm
Useful torque second – typical	6 µNm
Useful torque minute – typical	300 µNm
Operating temperature	0 - 50 °C
Instantaneous rate	-10/+20 sec/month
Resistance to magnetic fields	18.8 Oe
Resistance against shock	NIHS 91-10

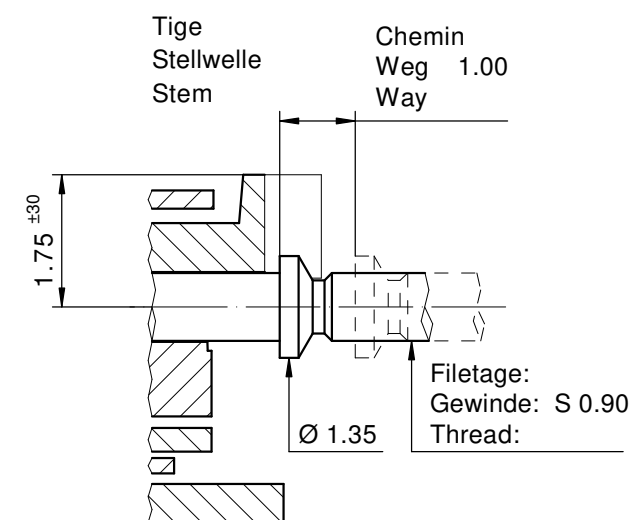


Battery Specifications

Standard battery	No. 395
Standard battery life	60 months
Battery voltage	1.5 V
Current consumption – typical	1.42 µA (Date Mechanism not in Gear)
Current consumption – maximum	3 µA (Date Mechanism not in Gear)



Pile
Batterie (395)
Battery
Ø 9.50 x 2.70 mm



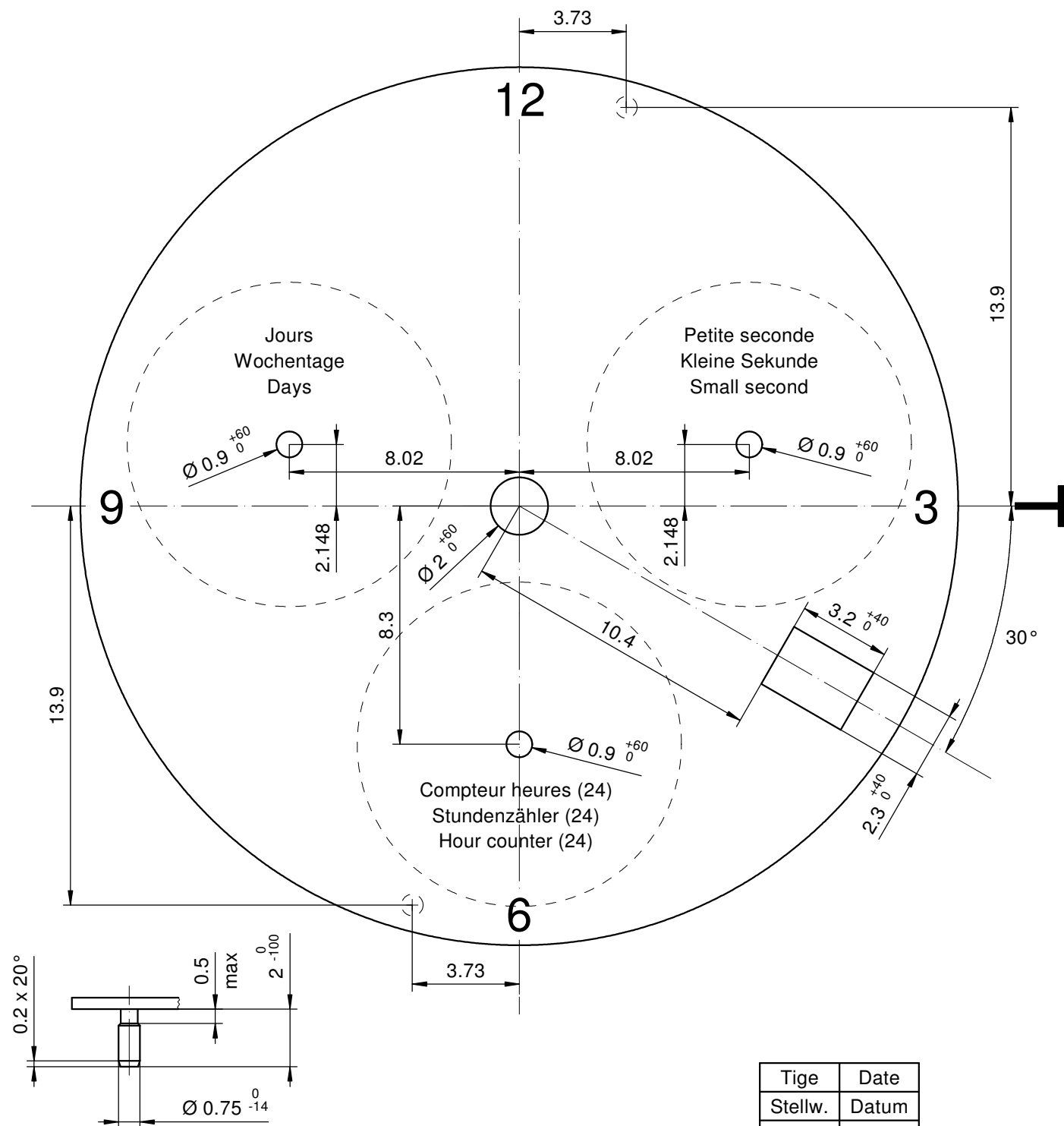
Position pour extraire la tige
Position zum Entfernen der Stellwelle
Position to remove the stem

Sécurité entre l'aiguille des seconde et le verre:
Sicherheit zwischen Sekundenzeiger und Glas: min. 0.50 mm
Security between second hand and glass:

Cage
Uhrwerkgestell 13¼"
Frame

RONDA X20, X30

Issued	04.11.2010	mg5227
Modified	04.08.2019	jk5228
Released	YES	
Mod. No.	41339	
Tolerance	±20 µm	
Scale	10 : 1	Page 1/1 A3
Sous réserve de modifications Aenderungen vorbehalten Modifications reserved		
No.	5000.408	01



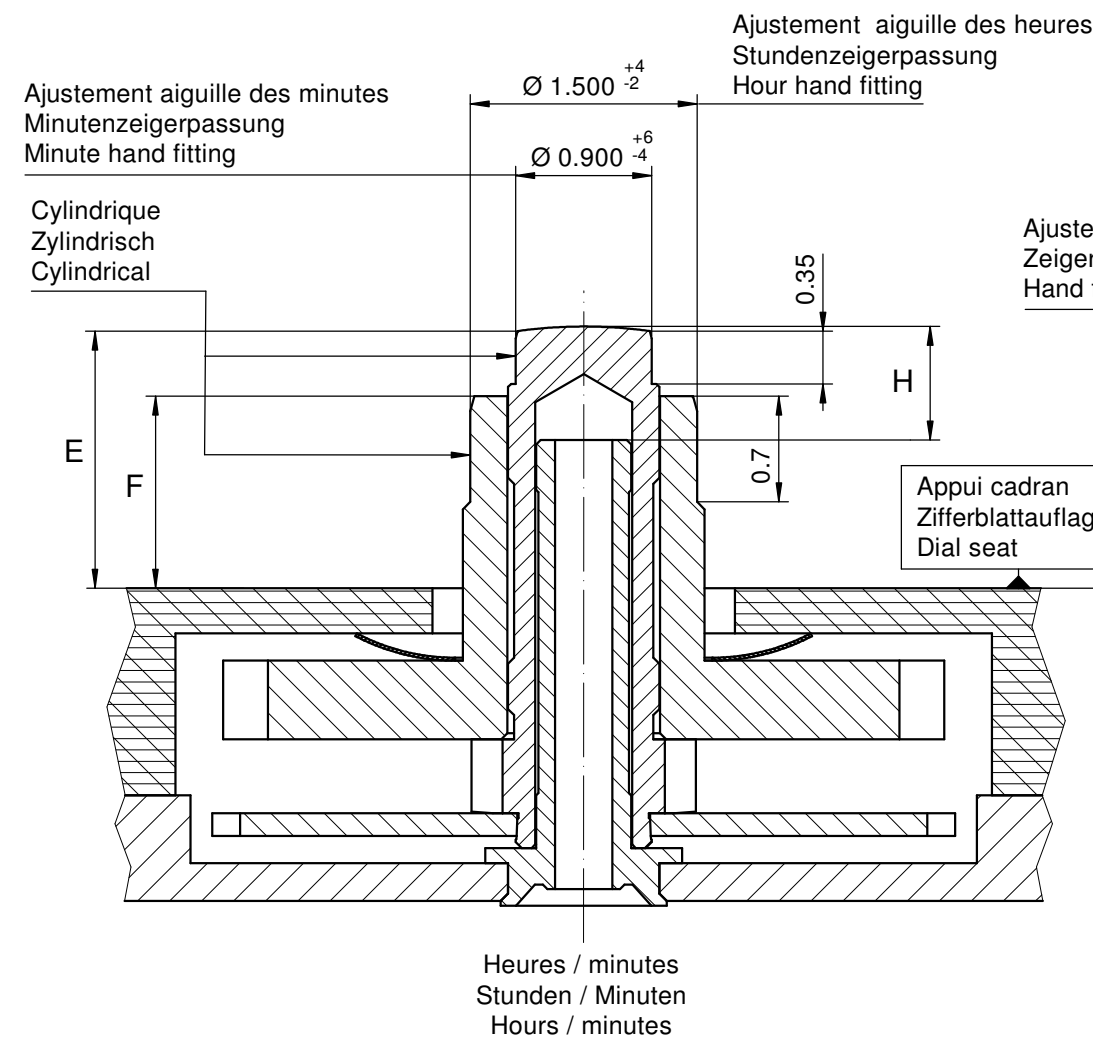
Epaisseur du cadran selon hauteur de l'aiguillage
 Zifferblattdicke gemäss Zeigerwerkhöhen
 Dial thickness according to hand fitting heights

Tige	Date
Stellw.	Datum
Stem	Date
3H	4H

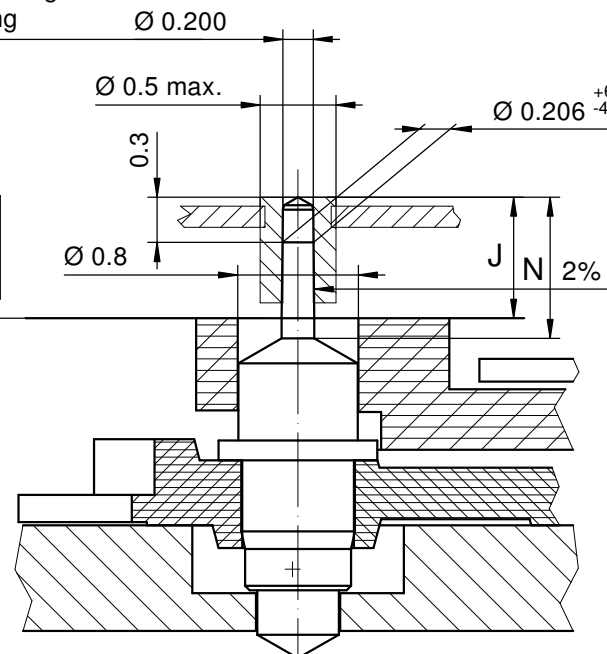
Cadran
 Zifferblatt 13 1/4"
 Dial

RONDA X 30

Issued	07.12.2018	jk5228
Modified	10.12.2018	jk5228
Released	YES	
Mod. No.	10036	
Tolerance	±20 µm	
Scale	5 : 1	Page 1/1 A4
Sous réserve de modifications Änderungen vorbehalten Modifications reserved		
No.	5010.836	00



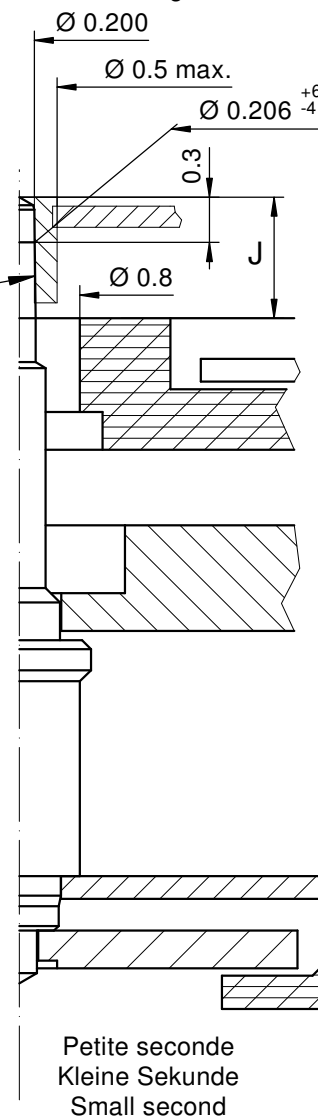
Ajustement aiguille
Zeigerpassung
Hand fitting



Jours
Wochentage
Days

24 Heures
24 Stunden
24 Hours

Ajustement aiguille
Zeigerpassung
Hand fitting



		Aig. des minutes Minutenzeiger Minute hand	Aig. des heures Stundenzeiger Hour hand	Aig. petite secondes Kleine Sekundenzeiger Small second hand	Aig. des jours Tagesanzeiger Day hand	Aig. des 24 heures 24 Stundenzeiger 24 hours hand	Lors de la pose d'aiguilles, le mouvement doit être soutenu. Beim Zeigersetzen muss das Werk abgestützt werden. The movement needs to be supported for hand setting.
mg	max.	30	30	10	10	10	Masse / Masse / Weight *
µNm	max.	0.70	0.70	0.06	0.06	0.25	Balourd / Unwucht / Unbalance *
gmm ²	max.	-	-	0.4	1.0	1.0	Inertie / Massenträgheit / Inertia *
N	max.	40	40	30	30	30	Force de chassage / Aufpresskraft / Force

Aiguillages Zeigerwerkhöhe Hand fitting height						
Dépassement Höhe über Zifferblattauflage Height over dial seat						
No	Chaussée Minutenrohr Cannon-pinion	Roue des heures Stundenrad Hour wheel	Petite seconde Kleine Sekunde Small second	Pignon des jours Tagesanzeigertrieb Day pinion	24 Heures 24 Stunden 24 Hours	
1	E	F	H	J	J	N
	1.70	1.25	1.30	0.80	0.80	0.90

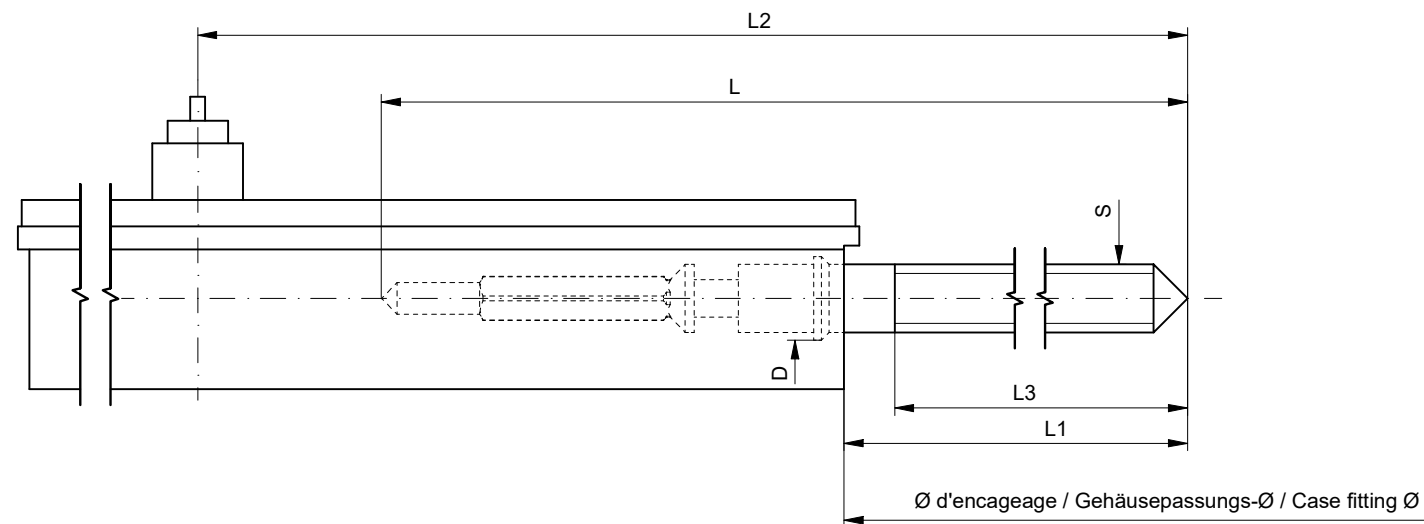
Aiguillages Zeigerwerkhöhe Hand fitting height						
Peinture comprise / inkl. Farbe / Paint included						
Epaisseur maximum du cadran Maximale Zifferblattdicke Maximum dial thickness						Epaisseur des aiguilles Zeigerdicke Hands thickness
No	Sous l'aiguille des minutes Unter Minutenzeiger Under minute hand	Sous l'aiguille des heures Unter Stundenzeiger Under hour hand	Sous l'aiguille de petite seconde Unter kleine Sekundenzeiger Under small second hand	Sous l'aiguille des jours Unter Tageszeiger Under days hand	Sous l'aiguille des 24 heures Unter 24 Stundenzeiger Under 24 hours hand	
1	1.30	0.85	0.40	0.40	0.40	

Aiguillages
Zeigerwerkhöhen 13¼"
Hand fitting heights

RONDA X 30

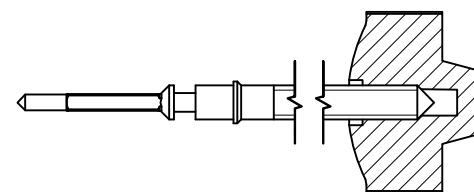
Issued	08.11.2010	mg5227
Modified	05.02.2019	jk5228
Released	YES	
Mod. No.	10036	
Tolerance	µm	
Scale	10 : 1	Page 1/1 A3

Sous réserve de modifications Änderungen vorbehalten Modifications reserved		
No.	3316.144	00



Tige de travail (intégrée dans le mouvement)
Arbeitsstellwelle (im Werk eingebaut)
Working stem (implemented in the movement)

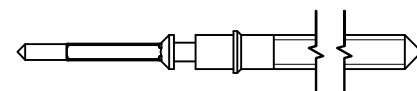
No. d'article Artikelnummer Part number	L	L1	L2	L3	S	D
3000.208.CO	21.85	11.15	26.15	10.85	0.90	1.35



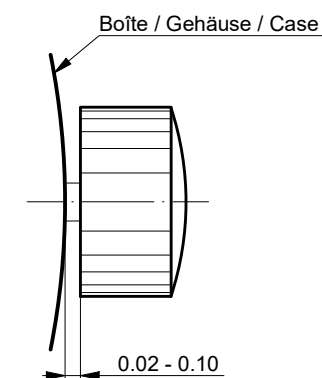
Couleur de la couronne Kronenfarbe Crown color	jaune foncé dunkelgelb dark yellow
Code	UN 1509

Tige (normale) / Stellwelle (normal) / Stem (normal)

No. d'article Artikelnummer Part number	L	L1	L2	L3	S	D
3000.208	21.85	11.15	26.15	10.85	0.90	1.35



Couronne normale
Normale Krone
Normal crown

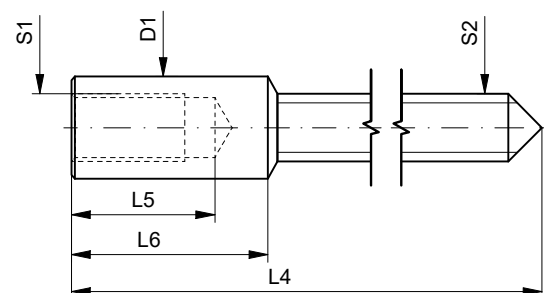


Couronne vissée
Geschraubte Krone
Screwed crown

Force ⇄ min. Kraft ⇄ min. Force ⇄ min.	10 N
Force ⇄ max. Kraft ⇄ max. Force ⇄ max.	15 N

Rallonge de tige / Stellwelle Verlängerung / Stem extension

No. d'article Artikelnummer Part number	L4	L5 (min)	L6	S1	S2	D1
3000.040	12.00	1.90	2.60	0.90	0.90	1.35



Tige (dimensions / forces)
Stellwelle (Dimensionen / Kräfte)
Stem (dimensions / forces)

RONDA Z60, Z50, X30, X20

Issued	11.02.2013	f15223
Modified	03.09.2019	jk5228
Released	YES	
Mod. No.	41339	
Tolerance	---	
Scale	---	Page 1 / 1 A3

Sous réserve de modifications
Aenderungen vorbehalten
Modifications reserved

No.	5030.026	04
-----	----------	----



Movement holder
Removing setting stem
H ZXX.1T



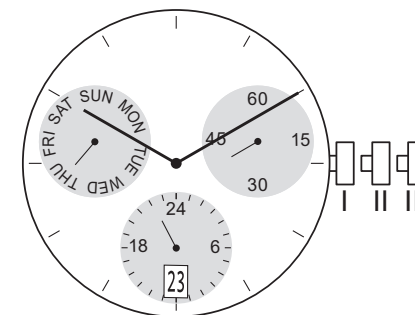
Movement holder
Setting hands
H ZXX.2A

Fitting dial and hands

- Crown in position III
- Wind hour hand forward, until date changes
- Remove working hands
- Fit dial
- Place the hands of the hour, minute and second towards 12 o'clock
- Place the hand of the 24h hand towards 24 o'clock
- Set the hands forward towards 1:30 a.m.
- Set hand of the weekday at 12 o'clock
- Wind hands forward to set actual day of the week and time
- Crown in position II
- Set date
- Crown in position I

Date switching duration:

~1¼hrs



General Instructions

Removing the setting stem can only be effected in Pos. I.

The use of supporting screws at pos. 3h/6h and in the centre is essential when mounting the hands (no support possible at 9h!).

Permitted hand setting strengths:

Hr / min. hands: <40N

Other hands: <30N

During quick date correction (setting stem in position II), a date switching speed of 5 d/s must not be exceeded.

Complement for T2 instructions

It might be possible that the date jump will not be finalized when the date is set manually. In that case the movement will be adjusted automatically at the next date jump.

RONDA xtratech – Movement cal. X20 / X30

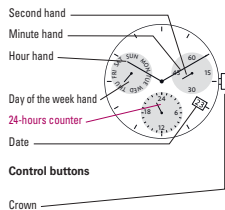
User's Manual English

You have decided to buy a watch, which was assembled by a watchmaker using a Ronda movement. Please note that no watches are produced or distributed under the Ronda brand.

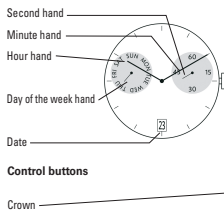
In case of repairs, guarantee claims and questions concerning the functioning of a watch, purchasers and consumers should contact their retailer or the watch manufacturer, for which the relevant information can be found in the sales or guarantee documentation provided with the watch.

Description of the display and control buttons

Display elements X30

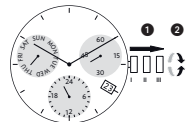


Display elements X20



01

Setting the time



- 1* Pull out the crown to position III (the watch stops).

- 2 Turn the crown until you reach the correct time.

- 3* Push the crown back into position I.

Please note:

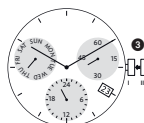
* In order to set the time to the exact second, 1 must be pulled out when the second hand is in position «60». Once the hour and minute hands have been set, 3 must be pushed back into position I at the exact second.

02

Setting the date (quick mode)



- 1 Pull out the crown to position II (the watch continues to run).



- 2 Turn the crown anticlockwise until the correct date appears.

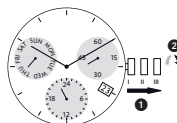
- 3 Push the crown back into position I.

Please note:

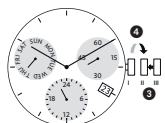
During the date changing phase between approx. 09:45 PM and midnight; the date must be set to the date of the following day.

03

Setting the date, day of the week and time



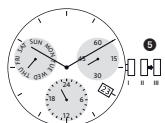
- 1 Pull out the crown to position III (the watch stops).



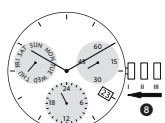
- 2 Turn the crown anticlockwise until yesterday's day of the week appears.

- 3 Push the crown to position II.

- 4 Turn the crown until yesterday's date appears.



- 5* Pull out the crown to position III (the watch stops).



- 6 Turn the crown anticlockwise until the correct date and day of the week appears.

- 7** Continue to turn the crown anticlockwise until the correct time appears.

- 8 Push the crown back into position I.




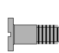

Please note:

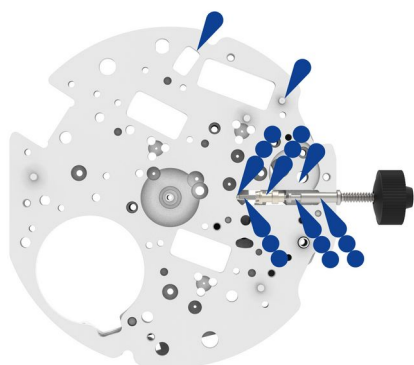
* To set your watch to the exact second, please refer to the chapter entitled «setting the times».




** Please observe the AM/PM clock rhythm.

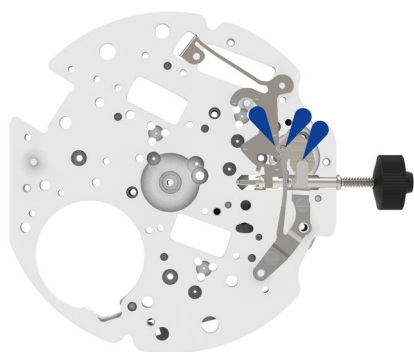
04









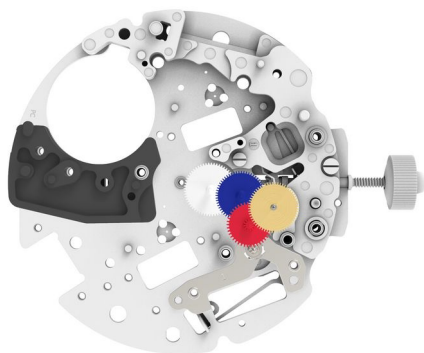
- | | | | |
|---|---|----------|--------------------------|
| 1 |  | 2000.709 | Main plate |
| 2 |  | 3016.034 | Stop lever |
| 3 |  | 3603.098 | Electronic modul support |
| 4 |  | 4000.343 | Screw |
| 5 |  | 4000.248 | Screw |




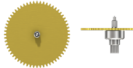
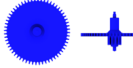
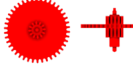



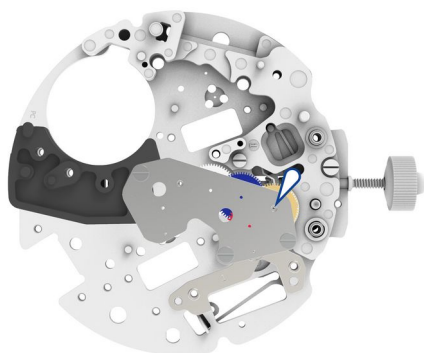
- | | | | |
|---|---|-------------|-----------------------------|
| 6 |  | 3001.072.FI | Sliding pinion |
| 7 |  | 3000.208.CO | Working stem (dual) |
| 8 |  | 8200 / 9020 | Moebius 8200 / Moebius 9020 |








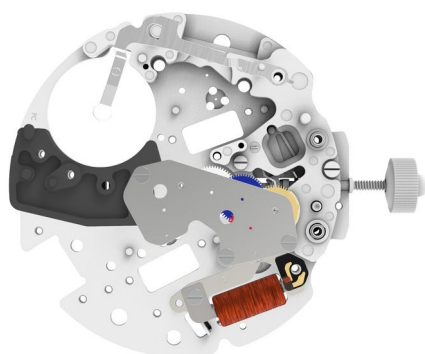
- | | | | |
|----|---|-------------|----------------------|
| 9 |  | 3015.095 | Yoke |
| 10 |  | 3017.064.CO | Setting lever |
| 11 |  | 3905.083 | Setting lever jumper |
| 12 |  | 4000.342 | Screw |
| 13 |  | 4000.342 | Screw |
| 14 |  | 8200 | Moebius 8200 |






15		3603.099	Battery support
16		3622.070	Stator
17		3715.132.RK	Rotor
18		3122.070.CO	Third wheel
19		3136.214	Second wheel (Aig.)
20		3147.089	Intermediate wheel
21		3136.216.CO	Small second wheel (Aig.)

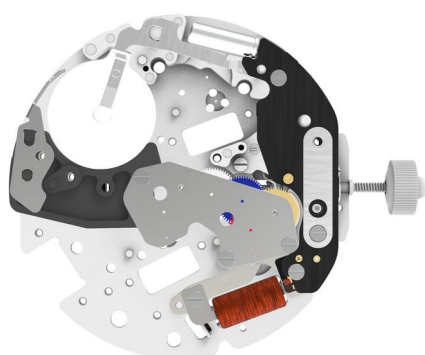


22		2020.210.M01.X30	Train wheel bridge
23		4000.248	Screw
24		4000.248	Screw
25		4000.248	Screw
26		9014	Moebius 9014





- | | | | |
|---|---|-------------|----------|
| 27 |  | 3601.153 | Bridle - |
| 28 |  | 3621.078.RK | Coil |
| Attention: Please hold the coil only on the grey coil core. | | | |


- | | | | |
|----|---|----------|-------|
| 29 |  | 4000.248 | Screw |
|----|---|----------|-------|




- | | | | |
|----|---|-------------|-------------------|
| 30 |  | 3612.236.RK | Electronic module |
|----|---|-------------|-------------------|

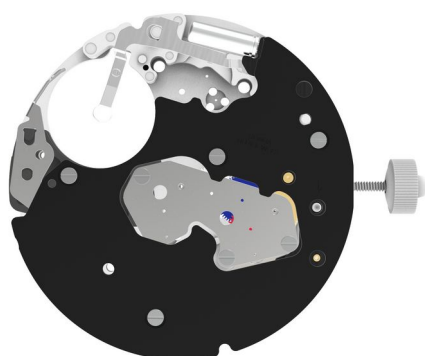
- | | | | |
|----|--|----------|-------|
| 31 | 
1:2 | 4000.341 | Screw |
|----|--|----------|-------|


- | | | | |
|----|---|----------|-------|
| 32 | 
1:2 | 4000.341 | Screw |
|----|---|----------|-------|


- | | | | |
|----|---|----------|-------|
| 33 |  | 4000.248 | Screw |
|----|---|----------|-------|


- | | | | |
|----|---|----------|-------------------------|
| 34 |  | 2130.233 | Setting mechanism cover |
|----|---|----------|-------------------------|


- | | | | |
|----|---|----------|----------------|
| 35 |  | 3601.154 | Lateral bridle |
|----|---|----------|----------------|




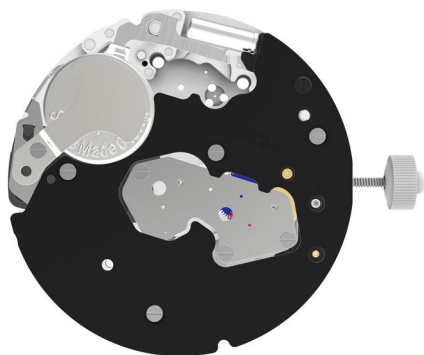
- | | | | |
|----|---|----------|-------------------------|
| 36 |  | 2130.230 | Electronic module cover |
|----|---|----------|-------------------------|

- | | | | |
|----|---|----------|-------|
| 37 |  | 4000.248 | Screw |
|----|---|----------|-------|


- | | | | |
|----|--|----------|-------|
| 38 | 
1:2 | 4000.341 | Screw |
|----|--|----------|-------|


- | | | | |
|----|--|----------|-------|
| 39 | 
1:2 | 4000.341 | Screw |
|----|--|----------|-------|

- | | | | |
|----|--|----------|-------|
| 40 | 
1:2 | 4000.341 | Screw |
|----|--|----------|-------|

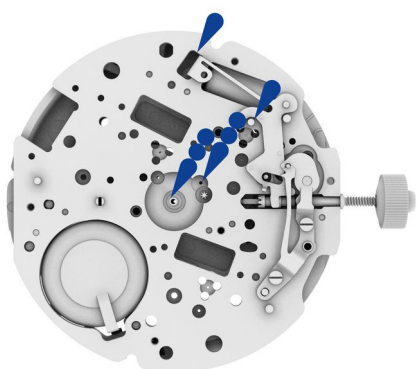



41  3600.010.HGF Battery 395 (Ø 9.50 x 2.70)


42  3601.152 Bridle +

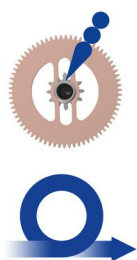
43  4000.341 Screw

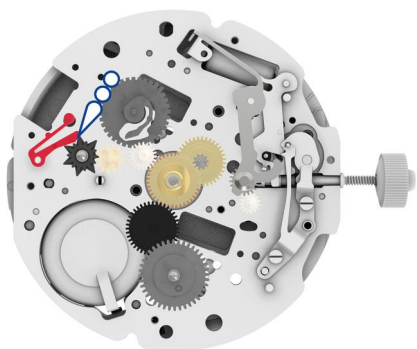
1:2




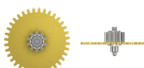












44  8200 / 9020 Moebius 8200 / Moebius 9020






45  9020 Moebius 9020

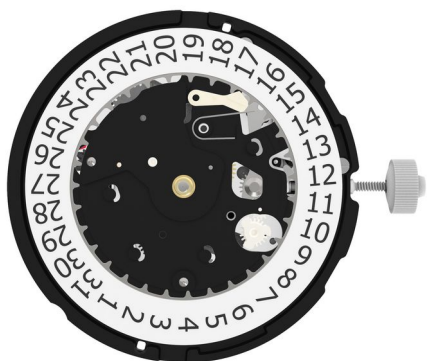








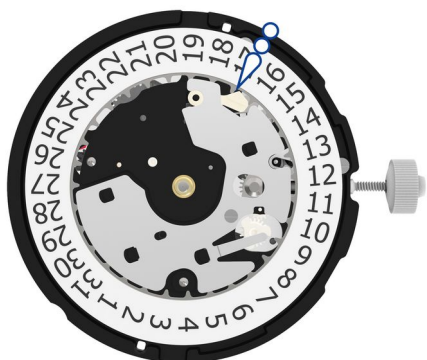
46		3015.096.CO	Setting lever yoke
47		3004.245	Date setting wheel
48		3305.371.CO	Cannon pinion (Aig.)
49		3007.092.CO	Minute wheel
50		3301.332.TA	Hour wheel (Aig.)
51		3315.003	Friction spring
52		3147.090	Intermediate wheel 24h
53		3301.333.CO	Hour wheel 24H
54		3004.264	Date indicator driving wheel
55		3147.091	Intermediate date wheel
56		3401.087.CO	Day wheel
57		3004.247	Days driving wheel
58		3500.082	Day jumper
59		I-4	Moebius I-4






60		2130.231	Setting mechanism cover
61		4000.248	Screw
62		4000.248	Screw
63		4000.248	Screw
64		4000.248	Screw

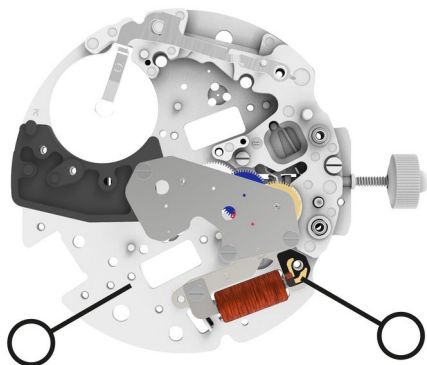


65		3504.243.AB.1.A	Date indicator (T3, G4) Nick of the indicator at 3 o'clock.
66		3507.067	Date corrector
67		3500.081	Date jumper
68		3905.084	Date jumper spring

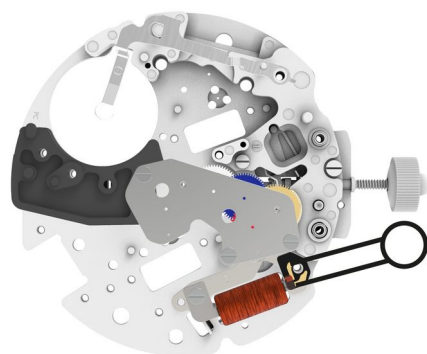


69		2130.229	Date mechanism maintaining plate
70		4000.343	Screw
71		I-4	Moebius I-4

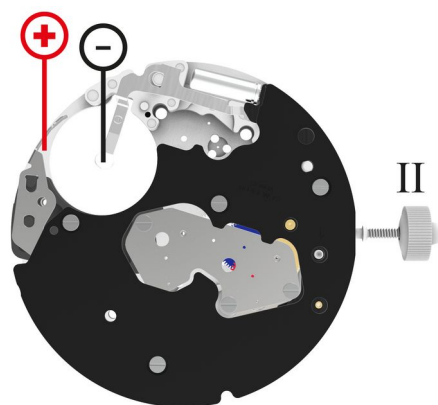
Measurement



Coil insulation
infinite

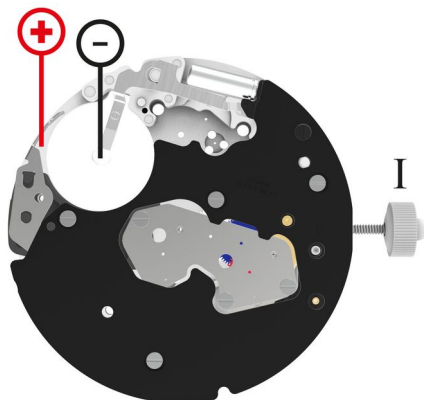


Coil resistance movement
(min./max.) 1500 - 1700 Ohm



Setting stem in position III, 60 s measuring interval.
(typ./max.) 0.10 / 0.30 μ A

Lower working voltage limit
<1.20 V



Setting stem in position I, calendar not in gear, 60s measuring interval.

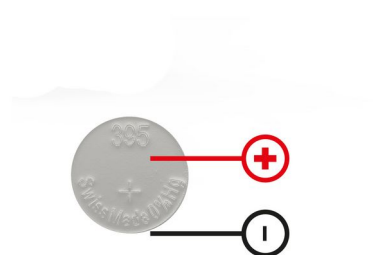
(typ./max.) 1.42 / 3.00 μ A

60s measuring interval

-10 .. +20s/mth

Lower working voltage limit

<1.20 V



Voltage

typ. 1.50 V