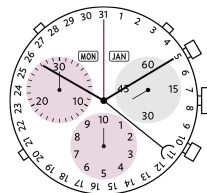
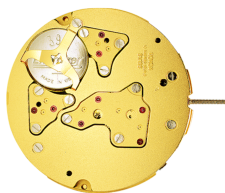
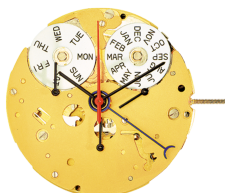


Caliber 5040.F – 12½"



Product Specifications

Analog quartz movement

Line startech

Caliber 5040.F

Size 12½"

Version Swiss Made 13 Jewels / gold plated

Standard battery life 54 months

Standard hand fitting height 3

Features

- Repairable metal watch movement
- Power saving mechanism with pulled out stem:
Reduction of consumption approximately 70%
- Very easy handling by two pushers

Functions

- 30 minute counter
- Center stop second (1/1 sec)
- 10 hour counter
- 1/10 seconds up to 30 minutes
- ADD and SPLIT functions
- Chronograph
- Day indicator
- Small second
- Month indicator
- Date by hand

Quartz Movements

Chronographs

RONDA startech

Caliber 5040.F – 12½"

Technical Specifications

| | |
|--|--------------------|
| Diameter Total | 28.60 mm |
| Case fitting | 28.00 mm |
| Movement height | 4.40 mm |
| Height over standard battery | 4.40 mm |
| Movement rest | 0.60 mm |
| Height over stem | 1.90 mm |
| Length of stem travel | 0.90 mm |
| Stem thread | 0.90 mm |
| Useful torque second – typical | 6 µNm |
| Useful torque minute – typical | 300 µNm |
| Useful torque center stop second – typical | 7 µNm |
| Operating temperature | 0 - 50 °C |
| Instantaneous rate | -10/ +20 sec/month |
| Resistance to magnetic fields | 18.8 Oe |
| Resistance against shock | NIHS 91-10 |

Battery Specifications

| | |
|-------------------------------|--------------------------------------|
| Standard battery | No. 395 |
| Standard battery life | 54 months |
| Battery voltage | 1.5 V |
| Current consumption – typical | 1.32 µA (Date Mechanism not in Gear) |
| Current consumption – maximum | 1.65 µA (Date Mechanism not in Gear) |



Watch production

[Drawing Casing ring \(standard, PDF\)](#)
[Drawing Dial \(stem 3h, PDF\)](#)
[Drawing Hand fitting \(hand height 3, PDF\)](#)
[Drawing Stem](#)
[Casing information \(PDF\)](#)

User's manual

[User's manual \(PDF\)](#)

Watch repairs

[Technical instruction up to code L \(PDF\)](#)
[Technical instruction for code M \(PDF\)](#)
[Technical instruction as of code N \(PDF\)](#)