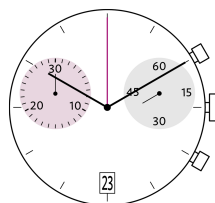


Caliber Z50 – 13¼"



Product Specifications

Analog quartz movement

Line startech

Caliber Z50

Size 13¼"

Version Swiss Made 0 Jewels / nickel plated

Version Swiss Parts 0 Jewels / nickel plated

Standard battery life 50 months

Standard hand fitting height 1

Features

- Repairable movement with metal main plate and bridges
- Power saving mechanism with pulled out stem: Reduction of consumption approximately 70%
- Very easy handling by two pushers

Functions

- 30 minute counter
- Center stop second (1/1 sec)
- ADD and SPLIT functions
- Chronograph
- Small second
- Date

Quartz Movements

Chronographs

RONDA startech

Caliber Z50 – 13¼"

Technical Specifications

Diameter Total	30.60 mm
Case fitting	30.00 mm
Movement height	4.60 mm
Height over standard battery	4.60 mm
Movement rest	1.37 mm
Height over stem	1.75 mm
Length of stem travel	1.00 mm
Stem thread	0.90 mm
Useful torque second – typical	6 µNm
Useful torque minute – typical	300 µNm
Useful torque center stop second – typical	6 µNm
Operating temperature	0 - 50 °C
Instantaneous rate	-10/ +20 sec/month
Resistance to magnetic fields	18.8 Oe
Resistance against shock	NIHS 91-10

Battery Specifications

Standard battery	No. 395
Standard battery life	50 months
Battery voltage	1.5 V
Current consumption – typical	1.42 µA (Date Mechanism not in Gear)
Current consumption – maximum	3 µA (Date Mechanism not in Gear)



Watch production

- Drawing Casing ring (standard, PDF)
- Drawing Dial (stem 3h, calendar 6h, PDF)
- Drawing Dial (stem 3h, calendar 12h, large date, PDF)
- Drawing Dial (stem 3h, calendar 4h - 6h - 8h, large date, PDF)
- Drawing Hand fitting (hand height 1, PDF)
- Drawing Stem
- Casing information (PDF)

User's manual

- User's manual (PDF)