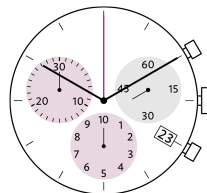
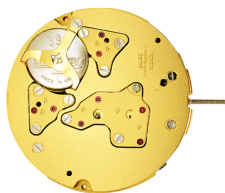


Quartz Movements

计时功能

朗达 明星系列

型号 5040.D - 12□"



产品规格

指针式石英机芯

系列

明星系列

型号

5040.D

尺寸

12□"

版本 瑞士制造

13 钻石 / 金色

版本 瑞士零件 远东组装

6 钻石 / 银色

电池寿命

54 月

标准针高

1

特点

- 针高1及2
- 金属机芯，可修理
- 拉停把心省电功能：节省大概70%耗电
- 两个按钮简易操作

功能

- 30分钟计时小眼
- 中心大秒计时（1/1秒）
- 10小时计时小眼
- 1/10 秒计时直至30分钟
- 积累及分段计时
- 计时
- 日历
- 小秒针

Quartz Movements

计时功能

朗达 明星系列

型号 5040.D - 12□”

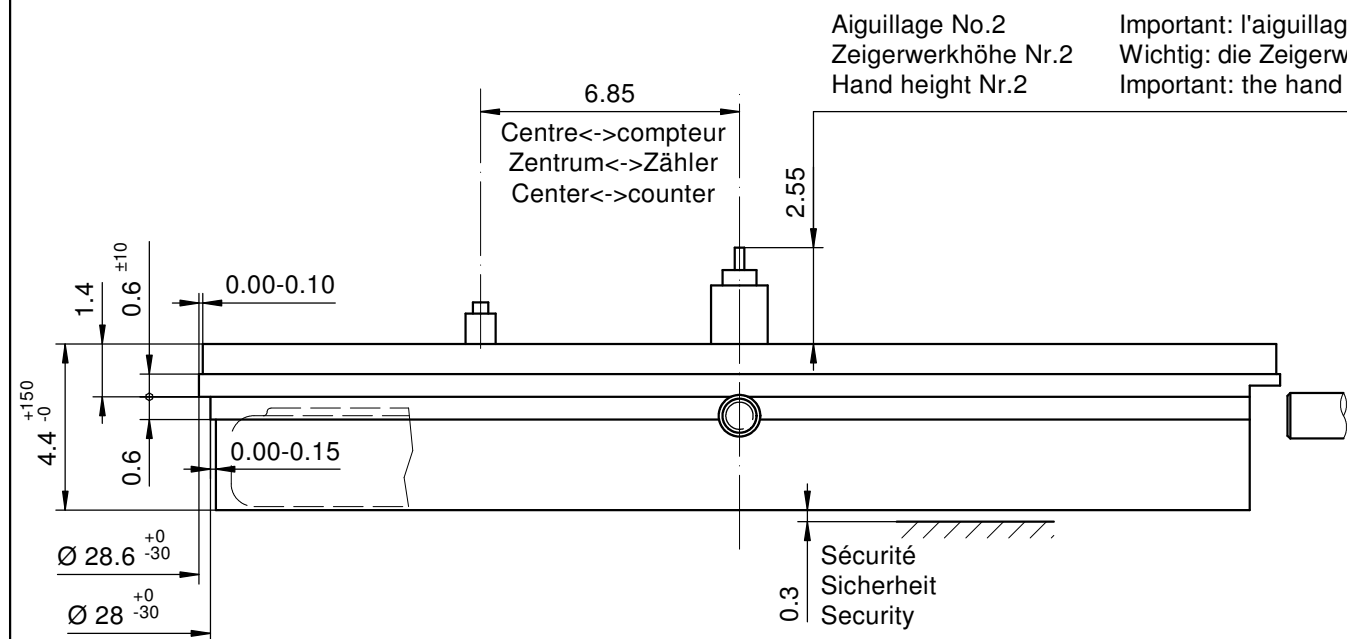
技术规格

机芯直径	28.60 mm
内罩座位直径	28.00 mm
机芯厚度	4.40 mm
电池以上厚度	4.40 mm
机芯座位	0.60 mm
把中	1.90 mm
把心行程	0.90 mm
把心螺纹直径	0.90 mm
秒针运行扭力 - 一般情况下	6 μ Nm
分针运行扭力 - 一般情况下	300 μ Nm
计时大秒针运行扭力 - 一般情况下	7 μ Nm
运作温度	0 - 50 °C
误差率	-10/ +20 秒/月
防磁度	18.8 Oe
防震度	NIHS 91-10



电池规格

电池类型	型号 395
电池寿命	54 月
电压	1.5 V
电耗 - 一般情况下	1.32 μ A (日历不在跳动当中)
电耗 - 上限	1.65 μ A (日历不在跳动当中)



Important: l'aiguillage peut varier selon le modèle
Wichtig: die Zeigerwerkhöhe kann bei verschiedenen Modellen unterschiedlich sein
Important: the hand height can vary between different models

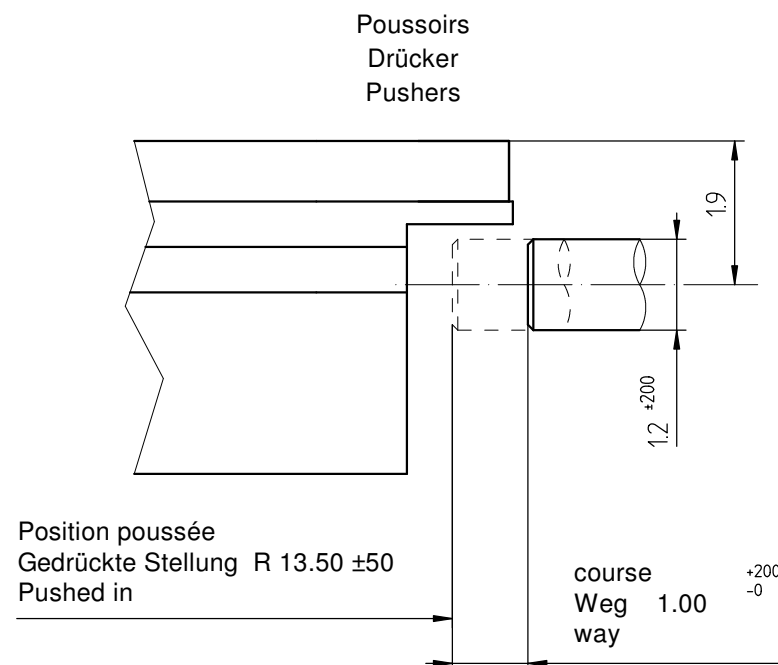
Sécurité entre l'aiguille des secondes et le verre:
Sicherheit zwischen Sekundenzeiger und Glas: 0.30mm
Security between second hand and glass:

Le cadran doit être tenu par la boîte
Das Zifferblatt muss durch die Schale gehalten werden
The dial must be hold by the case

La course du poussoir doit être limitée dans le poussoir lui-même. Sa position poussée doit être contrôlée.

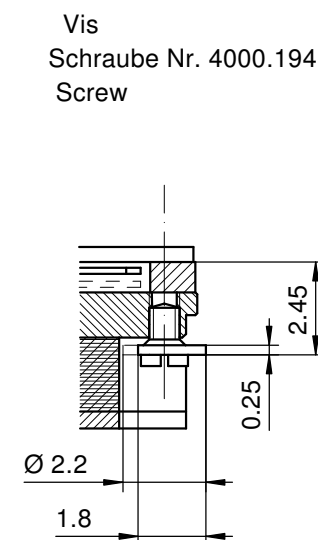
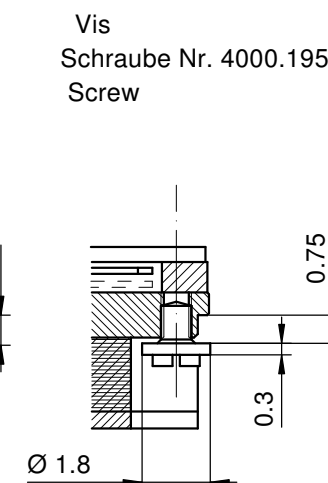
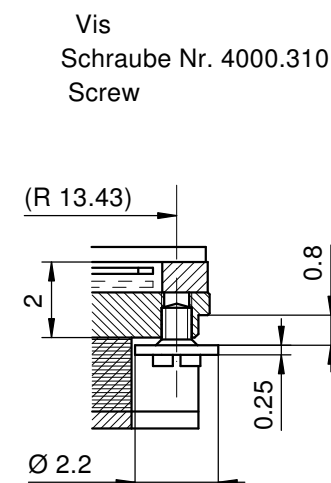
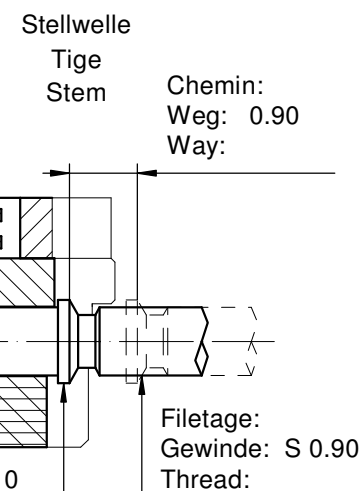
Die Weglänge des Drückers ist im Drücker selbst zu begrenzen. In der gedrückten Stellung ist seine Position zu kontrollieren

The way of the pusher has to be limited in the pusher itself. Its position must be checked while pushed in.



Côté fond de boîte
Seite Gehäuseboden
Case back side
Position pour extraire la tige
Position zum Entfernen der Stellwelle
Position to remove the stem

Pile
Batterie (395) Ø 9.50 x 2.60mm
Battery



Dégagement cercle d'entourage pour poussoir
Freistellung Gehäuse ring für Drücker
Opening movement holder for pusher



L'angle indiqué pour la direction du poussoir et la position doivent être respectés.
Pour un angle de 0° des poussoirs A et B, voir plan 5000.345

Der angegebene Winkel für die Drückerrichtung und die Position müssen eingehalten werden.
Für einen Drückerwinkel von 0° bei A und B, siehe Zeichnung 5000.345

The indicated angle of the pusher direction and the position must be fulfilled. For pusher angles of 0° (pusher A and B), see drawing 5000.345.

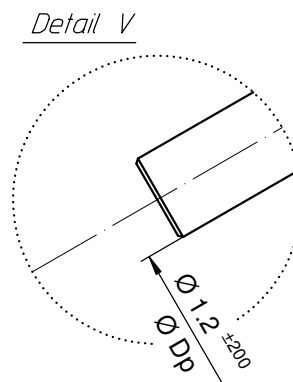
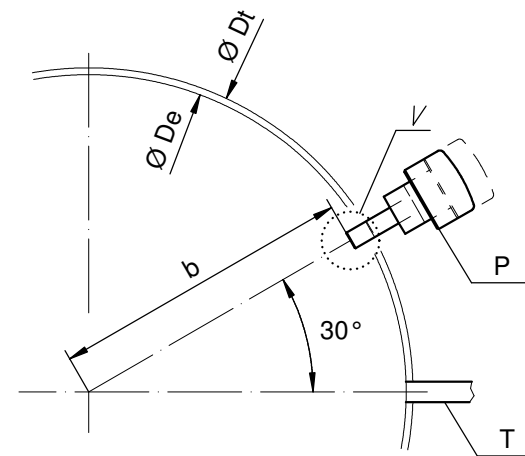
Cage
Uhrwerkgestell 12½"
Frame

RONDA

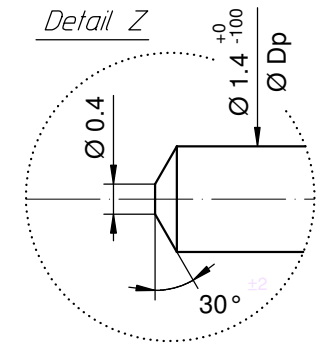
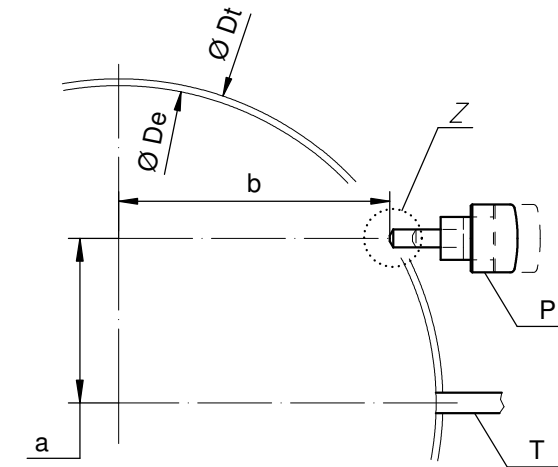
5040.B, 5040.D, 5030.D, 5021.D, 5040.E

Issued	08 Jan 2001	mg
Modified	31 Aug 2016 ÄA 34777	dh
Released	YES	
Tolerance	+/- 20 µm	
Scale	10 : 1 (5 : 1) (A3H)	
Sous réserve de modifications Äenderungen vorbehalten Modifications reserved		
No.	5000.315	10

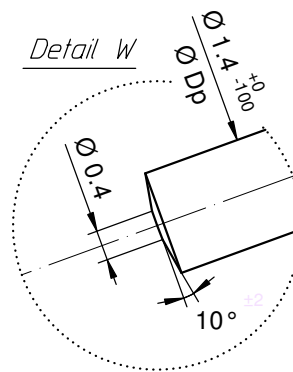
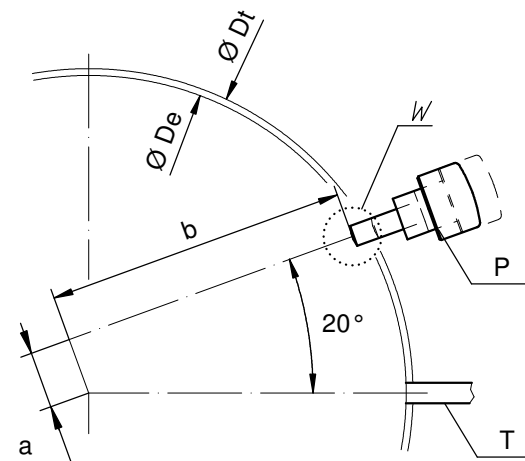
Angle Winkel Angle	30°	
Ø Dp	b	
1.00	13.50	
1.10	13.50	
1.20	13.50	
1.30	13.50	
1.40	13.50	



Angle Winkel Angle	0°	
Ø Dp	a	b
1.30	7.40	11.43
1.40	7.45	11.40

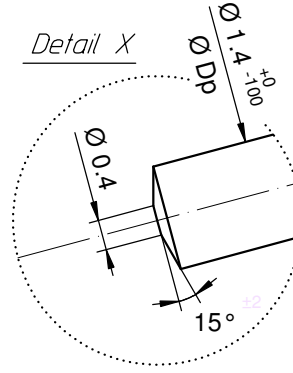
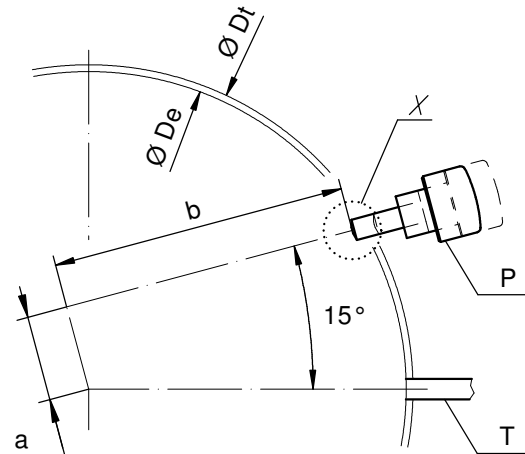


Angle Winkel Angle	20°	
Ø Dp	a	b
1.30	2.57	13.22
1.40	2.59	13.21

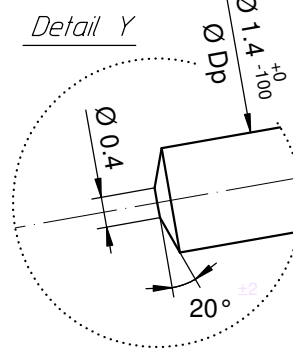
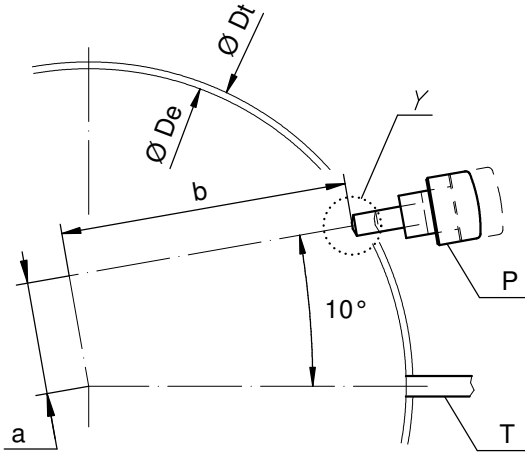


- Ø De: diamètre d'encageage
Durchmesser der Gehäusepassung
fitting-diameter
- Ø Dp: diamètre du poussoir
Drückerdurchmesser
pusher-diameter
- Ø Dt: diamètre total
Totaldurchmesser
total-diameter
- P: poussoir en position poussée
Drücker in gedrückter Stellung
pusher in pressed position
- T: tige de mise à l'heure
Stellwelle
stem

Angle Winkel Angle	15°	
Ø Dp	a	b
1.30	3.83	12.92
1.40	3.86	12.91



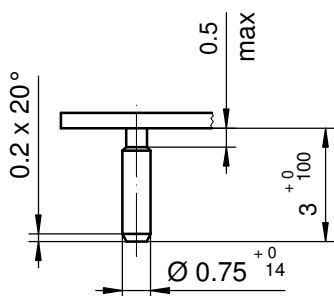
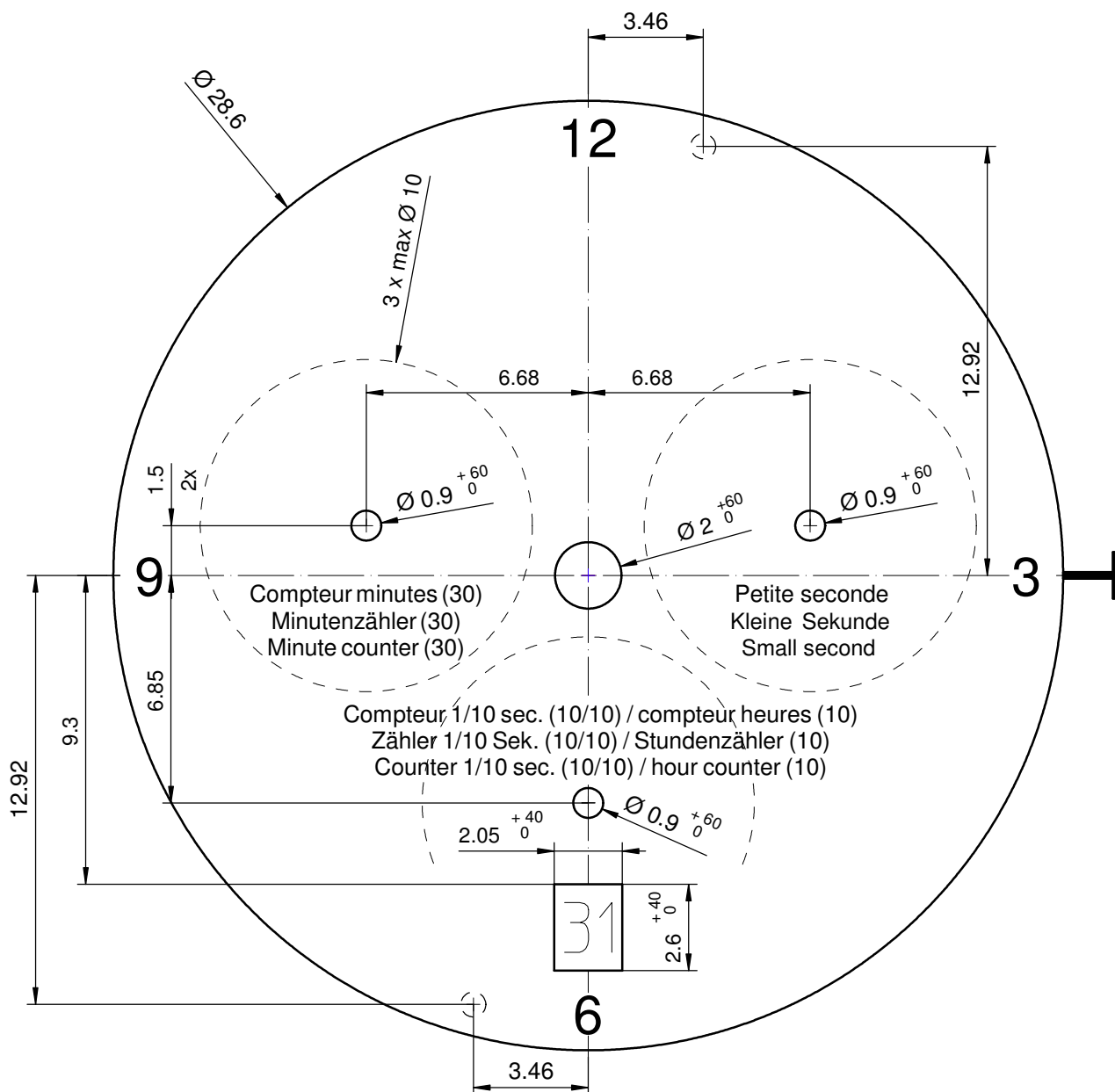
Angle Winkel Angle	10°	
Ø Dp	a	b
1.30	5.06	12.52
1.40	5.10	12.50



Angle des poussoirs A et B
Winkel der Drücker A und B
Angle of pusher A and B

RONDA 4xxx.x, 5xxx.x

Issued	06 Sep 2004	mk
Modified	30.März 2005 ÄA 1784	mk
Released	YES	
Tolerance	+/- 20 µm	
Scale	10 : 1 (5 : 1) (A3H)	
Sous réserve de modifications Äenderungen vorbehalten Modifications reserved		
No.	5000.345	01



Epaisseur du cadran selon hauteur de l'aiguillage
Zifferblattdicke gemäss Zeigerwerkhöhen
Dial thickness according to hand fitting heights

Tige	Date
Stellw.	Datum
Stem	Date
3H	6H

Cadran
Zifferblatt
Dial

12 1/2"

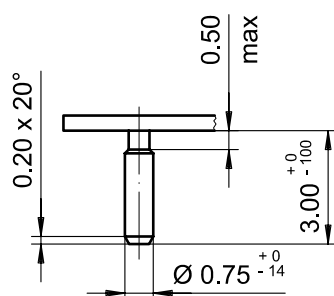
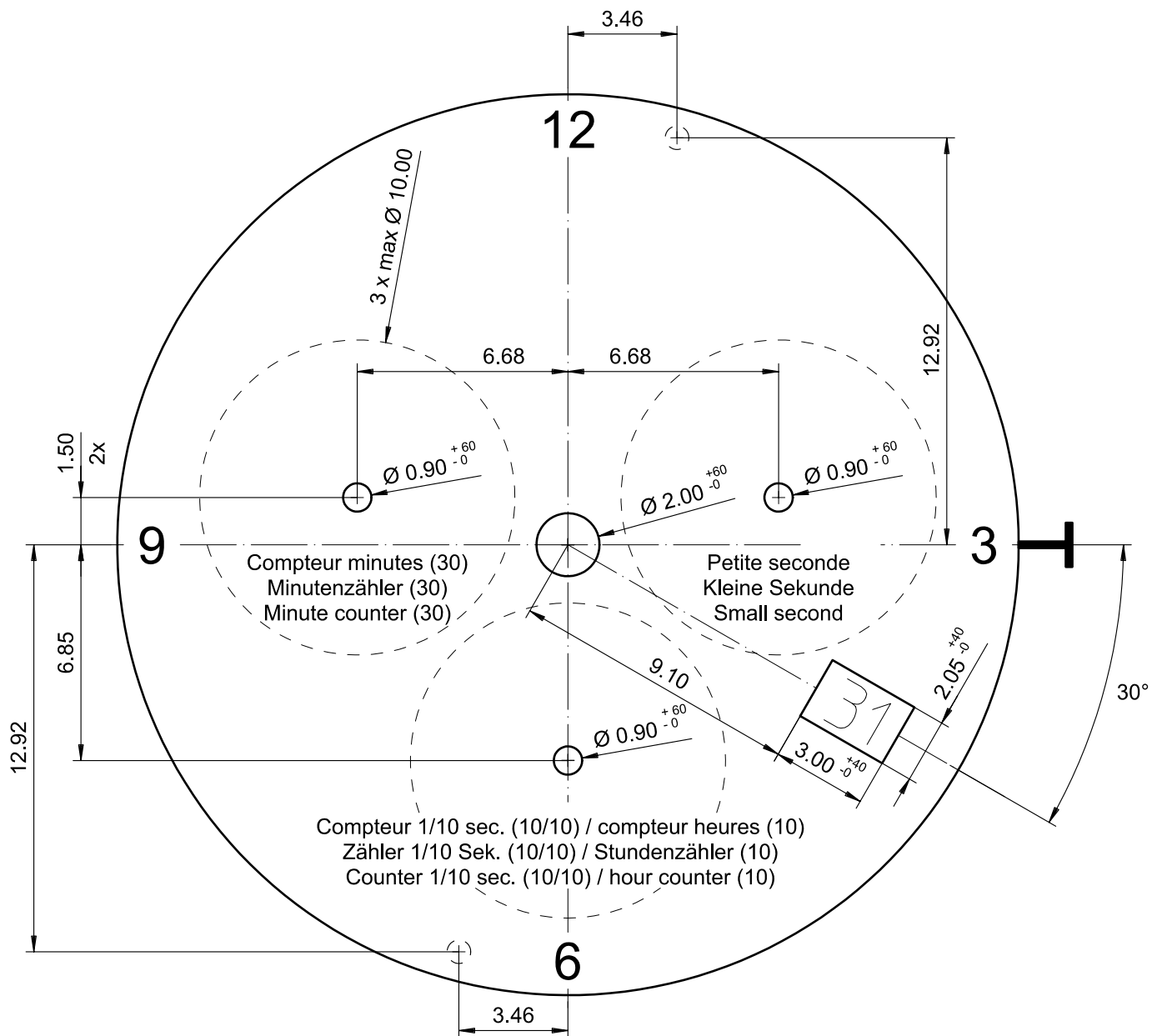
Imprimé	25 Sep 2009	dh
Modifications		
Checked		
Tolerance	+/- 20 µm	
Scale	5 : 1 (A4V)	

RONDA

5040.D

Sous réserve de modifications
Änderungenvorbehalten
Modifications reserved

No. 5010.009 00



Epaisseur du cadran selon hauteur de l'aiguillage
Zifferblattdicke gemäss Zeigerwerkhöhen
Dial thickness according to hand fitting heights

Tige	Date
Stellw.	Datum
Stem	Date
3H	4H

Cadran
Zifferblatt
Dial

12 1/2"

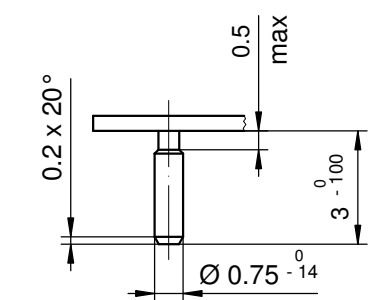
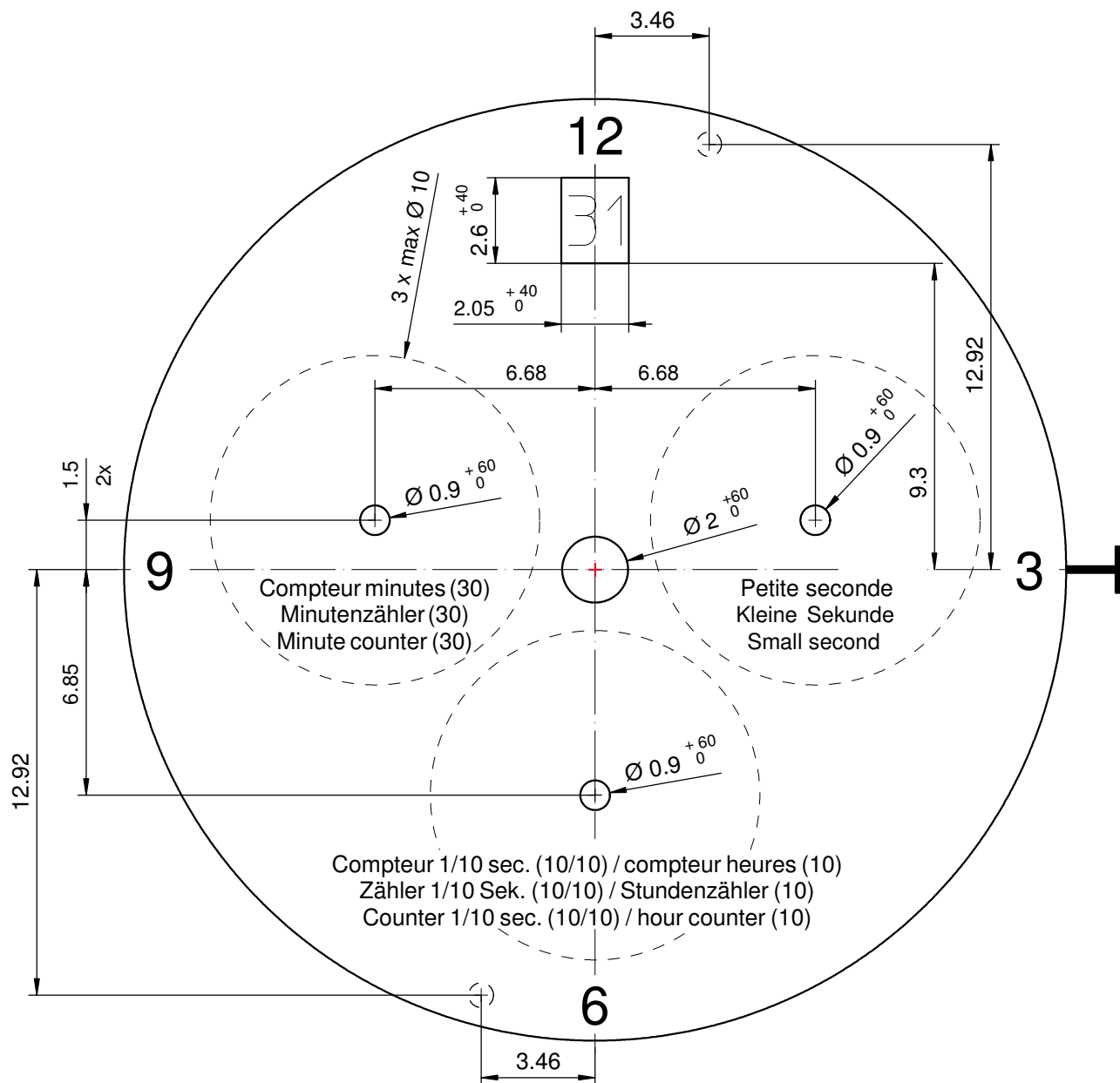
Issued	13 Dez 2006	cw
Modified	15.Dez.2006 ÄA ----	cm
Released	YES	
Tolerance	+/- 20 µm	
Scale	5 : 1 (A4V)	

RONDA

5040.D

Sous réserve de modifications
Änderungen vorbehalten
Modifications reserved

No. 5010.669 04



Epaisseur du cadran selon hauteur de l'aiguillage
Zifferblattdicke gemäss Zeigerwerkhöhen
Dial thickness according to hand fitting heights

Tige	Date
Stellw.	Datum
Stem	Date
3H	12H

Cadran
Zifferblatt
Dial

12 1/2"

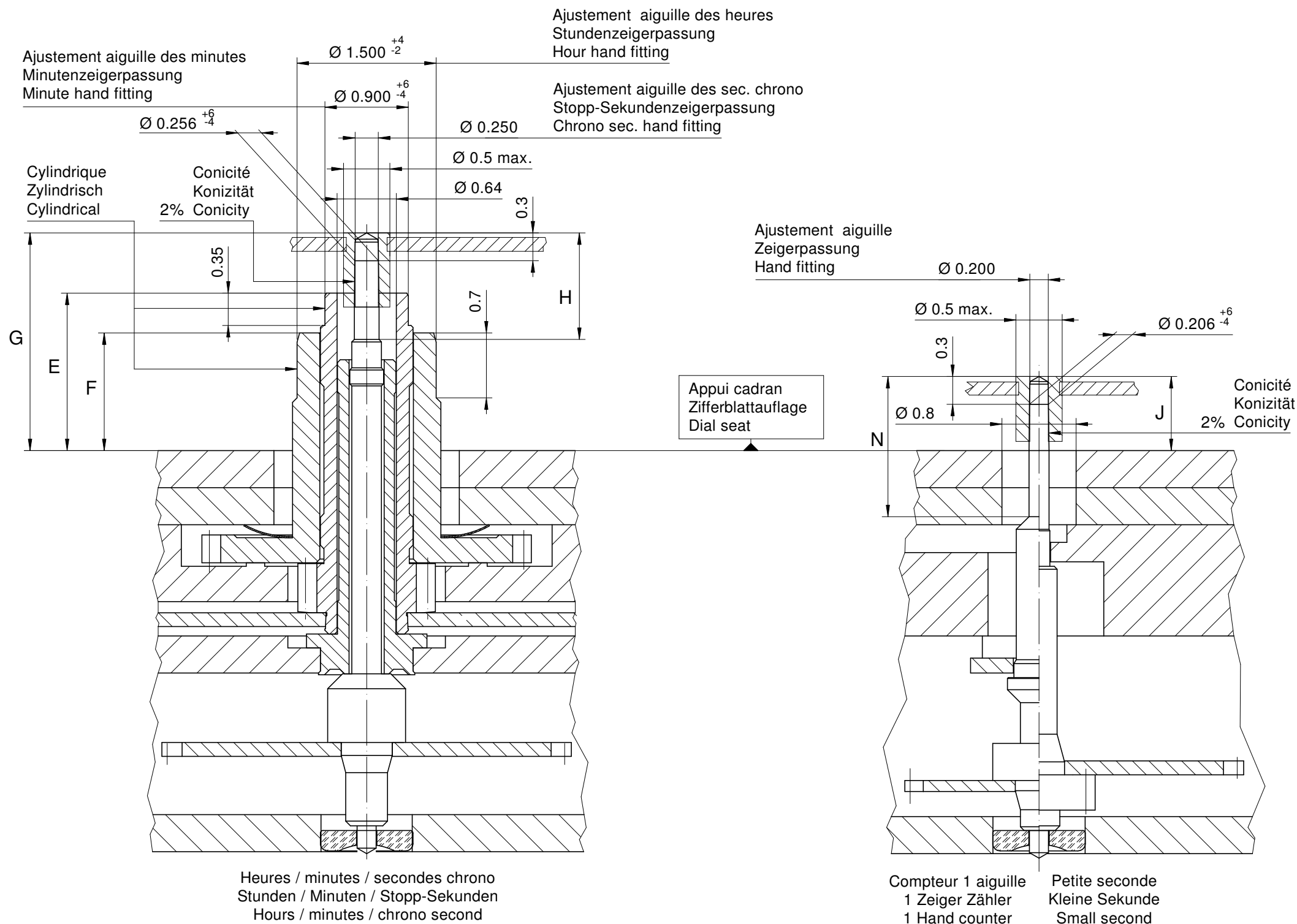
Issued	28 Jun 2011	dh
Modified	28.Jun.2011 ÄA 11305	dh
Released	YES	
Tolerance	+/- 20 µm	
Scale	5 : 1 (A4V)	

RONDA

5040.D

Sous réserve de modifications
Änderungenvorbehalten
Modifications reserved

No.	5010.672	00
-----	----------	----



Aiguillages Zeigerwerkhöhe Hand fitting height							
Dépassement Höhe über Zifferblattaufgabe Height over dial seat							
No	Pignon des secondes chrono Stopp-Sekundentrieb Chrono second pinion	Chaussée Minutenrohr Cannon-pinion	Roue des heures Stundenrad Hour wheel			Petite seconde Kleine Sekunde Small second	1 aig. 1 Zeiger 1 Hand
	G	E	F	H	N	J	J
1	2.35	1.70	1.27	1.37	1.50	0.80	0.80
2	2.85	2.20	1.77	1.87	1.05	1.30	1.30

Aiguillages Zeigerwerkhöhe Hand fitting height						
Peinture comprise / inkl. Farbe / Paint included						
Epaisseur maximum du cadran Maximale Zifferblattdicke Maximum dial thickness						
No	Sous l'aiguille des secondes chrono Unter Stopp-Sekundenzeiger Under chrono second hand	Sous l'aiguille des minutes Unter Minutenzeiger Under minute hand	Sous l'aiguille des heures Unter Stundenzeiger Under hour hand	Sous l'aiguille de petite seconde Unter kleine Sekundenzeiger Under small second hand	Sous l'aiguille compteur 1 aiguille Unter Zeiger 1 Zeiger Zähler Under hand 1 hand counter	Epaisseur des aiguilles Zeigerdicke Hands thickness
1	1.85	1.30	0.85	0.40	0.40	0.15
2	2.35	1.80	1.35	0.90	0.90	0.15

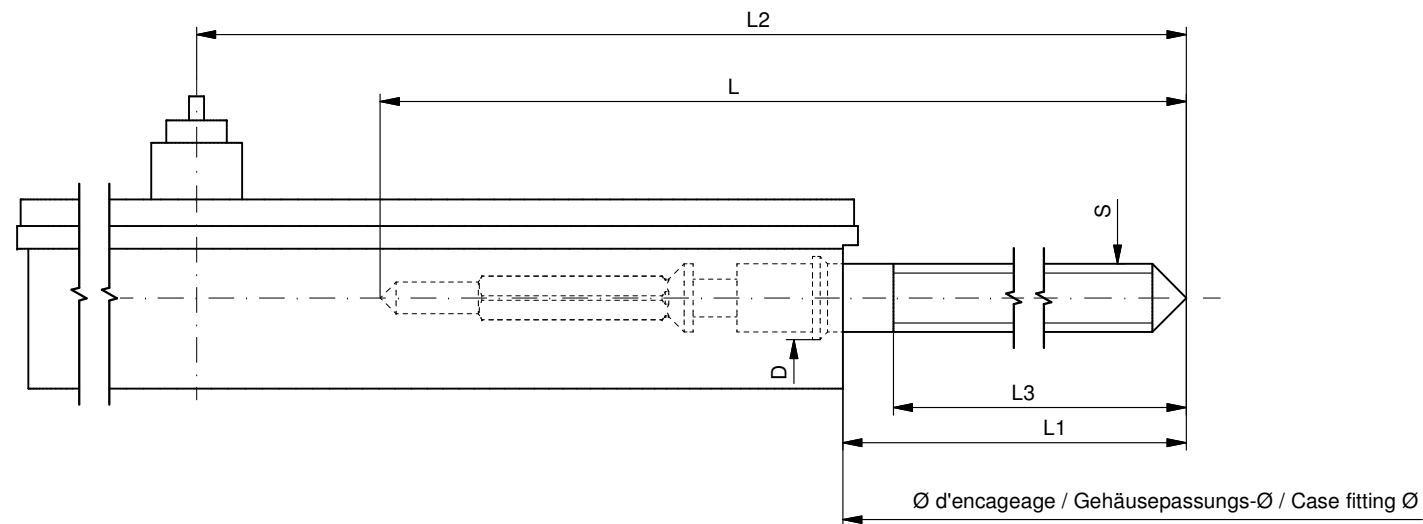
		Aig. des sec. chrono Stopp-Sekundenzeiger Chrono second hand	Aig. des minutes Minutenzeiger Minute hand	Aig. des heures Stundenzeiger Hour hand	Aig. petite secondes Kleine Sekundenzeiger Small second hand	Aiguille compteur (1 aig.) Zähler Zeiger (1 Zeiger) Counter hand (1 hand)	Lors de la pose d'aiguilles, le mouvement doit être soutenu. Beim Zeigersetzen muss das Werk abgestützt werden. The movement needs to be supported for hand setting.
mg	max.	10	30	30	10	10	Masse / Masse / Weight *
µNm	max.	0.06	0.80	0.80	0.07	0.02	Balourd / Unwucht / Unbalance *
gmm ²	max.	1.0	-	-	0.4	1.0	Inertie / Massenträgheit / Inertia *
N	max.	30	40	40	30	30	Force de chassage / Aufpresskraft / Force

Aiguillages Zeigerwerkhöhen 12½" Hand fitting heights		Issued	30 Sep 2002	mg
		Modified	15 Okt 2014 ÄA 13275	dh
		Released	Yes	
		Tolerance	µm	
		Scale	20 : 1 (A3H)	
RONDA	5040.B, 5040.D, 5040.E	Sous réserve de modifications Äenderungen vorbehalten Modifications reserved		
		No.	3316.075	08

* En cas de données différentes, veuillez contacter le service après-vente

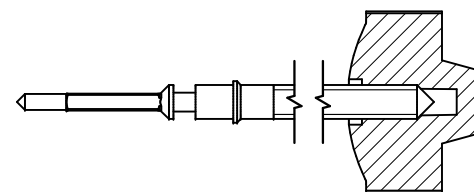
* Bei abweichenden Werten, bitte technischen Kundendienst anfragen

* In case of different values, please contact the customer service



Tige de travail (intégrée dans le mouvement)
Arbeitsstellwelle (im Werk eingebaut)
Working stem (implemented in the movement)

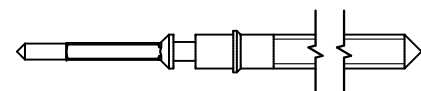
No. d'article Artikelnummer Part number	L	L1	L2	L3	S	D
3000.177.CO	20.00	10.23	24.23	10.15	0.90	1.10



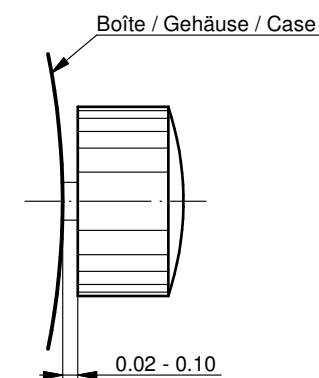
Couleur de la couronne Kronenfarbe Crown color	bleu foncé dunkelblau dark blue
Code	UN 5002

Tige (normale) / Stellwelle (normal) / Stem (normal)

No. d'article Artikelnummer Part number	L	L1	L2	L3	S	D
3000.177	20.00	10.23	24.23	10.15	0.90	1.10
3000.191	32.00	22.23	36.23	22.15	0.90	1.10



Couronne normale
Normale Krone
Normal crown

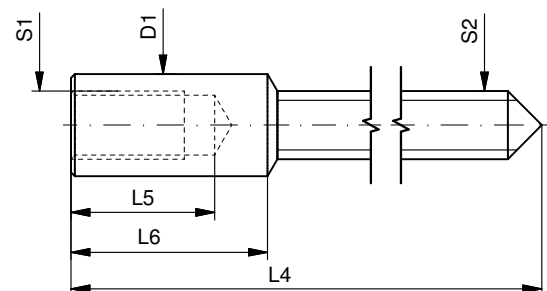


Couronne vissée
Geschraubte Krone
Screwed crown

Force ⇐ min. Kraft ⇐ min. Force ⇐ min.	10 N
Force ⇐ max. Kraft ⇐ max. Force ⇐ max.	15 N

Rallonge de tige / Stellwelle Verlängerung / Stem extension

No. d'article Artikelnummer Part number	L4	L5 (min)	L6	S1	S2	D1
3000.040	12.00	1.90	2.60	0.90	0.90	1.35



Tige (dimensions / forces)
Stellwelle (Dimensionen / Kräfte)
Stem (dimensions / forces)

RONDA

5010.B, 5020.B, 5021.D, 5030.D,
5040.B, 5040.D, 5040.E, 5040.F,
5050.B, 5050.C, 5051.C, 5130.B, 5130.D

Issued	05 Sep 2012	ds5222
Modified	17 Mär 2017 ÄA 34582	mg5224
Released	YES	
Tolerance	---	
Scale	10:1 (A3)	

Sous réserve de modifications
Änderungen vorbehalten
Modifications reserved

No.	5030.019	01
-----	----------	----



Movement holder
Removing setting stem
H5XXX.1T



Movement holder
Setting hands
H5XXX.1A

Fitting dial and hands

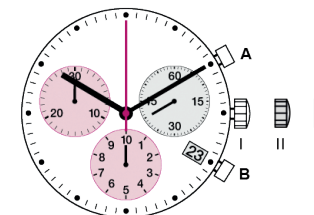
- Crown in position III
- Wind crown forwards, until date changes
- Remove working stem
- Fit dial
- Point all hands towards 12 o'clock
- Set time
- Zero chronograph hand*
- Crown in position II
- Set date
- Crown in position I

Date switching duration:

~1¼hrs

*Zeroing the Chronograph hand

- Activate pusher A and B for 2 seconds at the same time
(Chrono seconds hand rotates once)
- Pusher A → to correct chrono seconds hand
- Pusher B → to jump to hour hand
- Pusher A → to correct hand position
- Pusher B → to jump to minute hand
- Pusher A → to correct hand position



General Instructions

Removing the setting stem can only be effected in Pos. I.

The use of supporting screws is essential when mounting the hands.

Permitted hand setting strengths:

Hr / min. hands: <40N

Other hands: <30N

During quick date correction (setting stem in position II), a date switching speed of 5 d/s must not be exceeded.

朗达 明星系列 - 机芯型号 5040.E & 5040.D

中文使用手册

瑞士朗达是一个机芯供应商, 没有参与制造或分销成表。

若有任何手表相关之疑问, 如维修、保证期内投诉或手表功能问题, 请联系手表零售商、服务中心或制造商。所有联络资料可向您的销售员查询或参考保证文件。

显示和控制按钮描述

显示项目

秒针

星期

分针

时针

中心秒针

分钟计

1/10 秒计 (30分钟后转为小时计)

日期

控制按钮

按钮 A

把的

按钮 B

01

设定时间

1 把的拉至位置 III (腕表停止运行)。

2 转动把的至正确时间 8:45。

3* 推把的回位置 I

注意:

为了设定准确的秒数, 当秒针指向 <60。拉把的设定完小时及分钟后, 必须在正确的秒数将把的推回位置 I

02

设定日期 (快速模式)

1 把的拉至位置 II (腕表 继续运行)。

2 转动把的至正确日期 II

3* 推把的回位置 I

注意

9 PM至 12 PM 为日历转换时段, 若在这时段内设定日期, 必须比正确日期多转一天。

03

设定日期/星期/时间

例子:

- 腕表上的日期/时间 17 / 01:25 / 000

- 现在的日期/时间 23 / 20:35 / 170

1 把的拉至位置 III (腕表停止运行)。

2 转动把的至昨日星期日期 000

3 把的拉至位置 II

4 转动把的至昨日日期 22

5* 把的拉至位置 III (腕表停止运行)。

6 继续转动把的至正确日期 23 及星期日期 170

6** 继续转动把的至正确时间 8:35 PM

7 将把的推回位置 I

注意:

* 为了设定至准确的秒数 请参阅节奏 « 设定时间 »。

** 请注意腕表上的 AM/PM 模式

04

计时器(基本功能)

(开始 / 停止 / 还原)

例子:

1 开始: 按下按钮 A

2 停止: 再按下按钮 A 停止计时, 然后阅读计时计: 4 分钟 / 38 秒 / 7/10 秒

3 返回零位置: 按下按钮 B (计时指针会还原到零位置)

05

计时器: 计算累积时间

例子:

1 开始: (开始计时)

2 停止: (例子: 15 分 5 秒 1 后)

3 再开始: 继续计时)

4* 停止: (例子: 5 分 12 秒 3 后) = 20 分 17 秒 (显示累积计算时间)

5 还原: 计时指针会还原到零位置。

注意:

* 步骤 5 后, 可再按下按钮 A 继续计算累积时间 (再开始 / 停止, 再开始 / 停止, ...)

06

计时器: 计算分段时间

例子

1 开始: (开始计时)

2 显示分段时间: 例子 20 分钟 17 秒 (指针停止, 计时器仍然在背 后运行)

3 追时: (计时指针会迅速到达持续计算的时间)。

4 停止: (显示最后的时间)

5 还原: 计时指针返回零位置

注意:

* 步骤 5 后, 可再按下按钮 B 继续计算分段时间 (显示分段时间 / 追时, ...)

07

调较计时指针到零位置

例子:

当有时计指针不在零位置时, 便需要调较指针 (例如: 更换电池后)。

1 把的拉至位置 III (计时指针在/不在零位置)。

2 同时及持续按下按钮 A 及 B 最少 2 秒 (中心秒针会转动 360° → 修正模式启动)。

调较中心秒针

单步前进 1x 短按

连续前进 长按

调较下一支指针

调较 1/10 秒计 (6 时位置)

单步前进 1x 短按

连续前进 长按

调较下一支指针

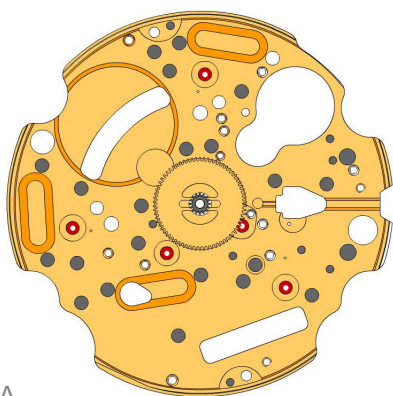
调较分钟计 (9 时位置)

单步前进 1x 短按

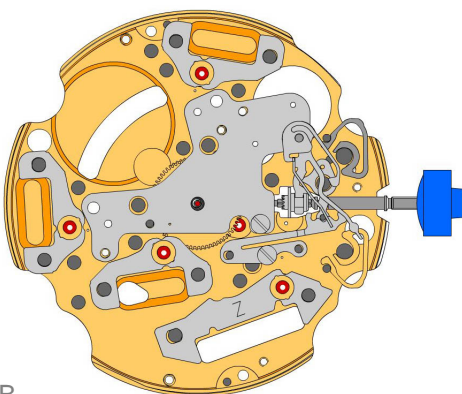
连续前进 长按

3 推把的回位置 I 结束调较计时指针 (能在任何时候执行)。

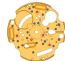
















08

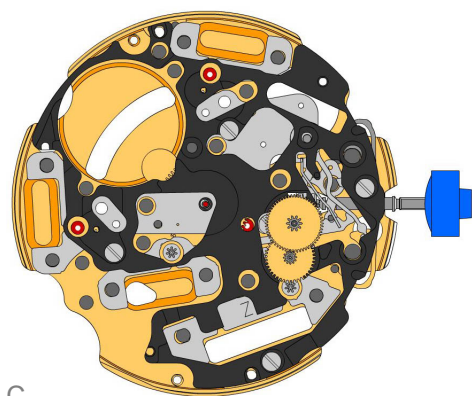


A



B

2000.574.G 1.		Main plate
3305.275.CO 2.		Cannon pinion with driver (Aig.1)
2030.017.CO 3.		Centre bridge Centre bridge held by 1 screw 4000.250. Parts 2030.017.CO and 3402.009.CO must be exchanged together.
4000.250 4.		Screw
3001.055.FI 5.		Sliding pinion
3000.177.CO 6.		Setting stem
3017.049 7.		Setting lever
3905.049 8.		Setting lever jumper (3 positions) Setting lever jumper held by 1 screw 4000.250.
4000.250 9.		Screw
3015.081 10.		Yoke (3 positions) Parts 3015.081 and 3905.067 must be exchanged together.
3905.067 11.		Yoke spring Tensioning the spring arm. Parts 3015.081 and 3905.067 must be exchanged together.
3406.030 12.		Pusher jumper B Put the grey jumper between the two posts on the further side.
3406.038 13.		Pusher jumper A Put the yellow jumper between the two posts on the closer side.
3622.040 14.		Stator Mark [Z] on stator.
3622.039 15.		Stator (counter 6h, 9h, chrono)
3622.039 16.		Stator (counter 6h, 9h, chrono)
3622.039 17.		Stator (counter 6h, 9h, chrono)



C


3603.079
18.  Plastic bracket
Plastic bracket held by 4 screws 4000.250.

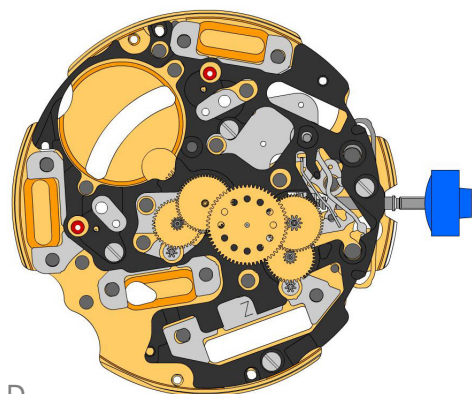
4000.250
19.  Screw

3715.094.RK
20.  Rotor


3715.094.RK
21.  Rotor


3147.046.CO
22.  Intermediate wheel

3136.142.CO
23.  Second wheel (long)

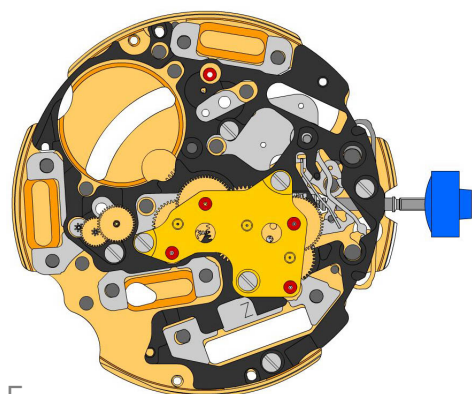


D

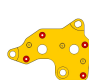
3147.047.CO
24.  Intermediate wheel (chrono)

3136.143.CO
25.  Chronograph wheel (Aig.1)

3122.056.CO
26.  Third wheel



E

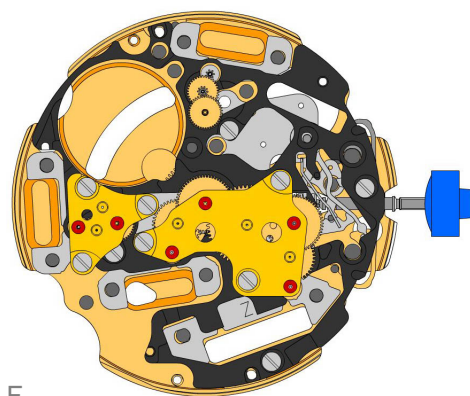
2020.148.G
27.  Train wheel bridge
Train wheel bridge held by 3 screws 4000.250.

4000.250
28.  Screw

3715.095.RK
29.  Rotor

3147.048.CO
30.  Intermediate wheel (counter)

3402.006.CO
31.  Minute counting wheel



F

2020.149.G
32.



Counter train wheel bridge
Counter train wheel bridge held by 3 screws 4000.250.

4000.250
33.



Screw

3715.095.RK
34.



Rotor

3147.053.CO
35.

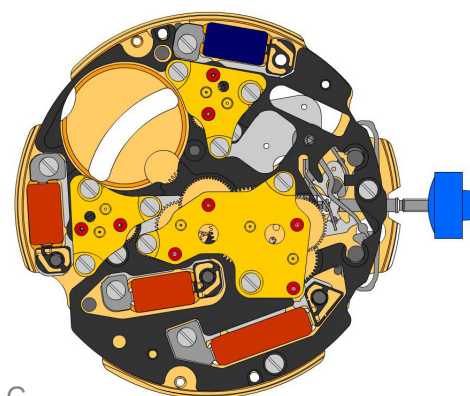


Intermediate wheel (counter 1/10sec)

3402.009.CO
36.



Counting wheel 1/10 sec
Parts 2030.017.CO and 3402.009.CO must be exchanged together.



G

2020.149.G
37.



Counter train wheel bridge
Counter train wheel bridge held by 3 screws 4000.250.

4000.250
38.



Screw

3621.053.RK
39.



Coil
Attention: Please hold the coil only on the grey coil core. Coil held by 1 screw 4000.250.

3621.054.RK
40.



Coil (counter 9h, chrono)
Attention: Please hold the coil only on the grey coil core. Coil held by 1 screw 4000.250.

3621.054.RK
41.



Coil (counter 9h, chrono)
Attention: Please hold the coil only on the grey coil core. Coil held by 1 screw 4000.250.

3621.055.RK
42.

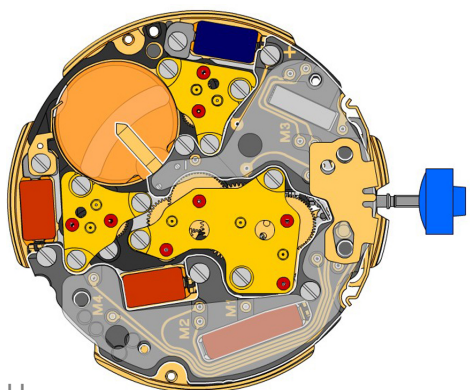


Coil (counter 6h)
Attention: Please hold the coil only on the grey coil core. Coil held by 1 screw 4000.250.

4000.250
43.



Screw



H

3601.118
44.



Contact strip
Contact strip held by 1 screw 4000.250.

4000.250
45.



Screw

3603.034
46.



Battery insulator

3612.144.5040
47.



Electronic module
Electronic module held by 5 screws 4000.248. Electronic measurements may be realised now.

4000.248
48.



Screw

3603.069
49.

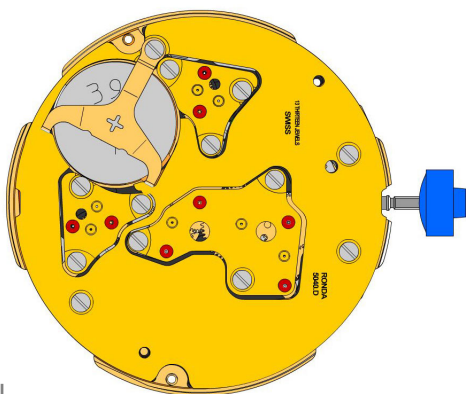


Circuit insulator

3601.107.G
50.



Pusher contact spring

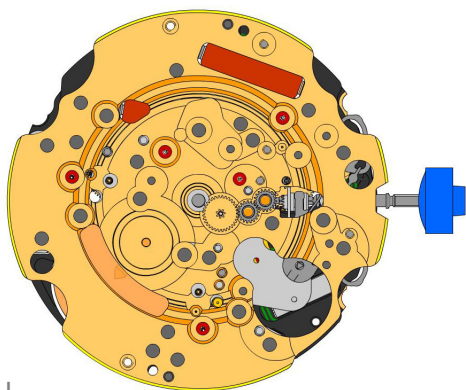


2130.137.G.M01.5040D
51.  **Electronic module cover**
Electronic module cover held by 3 screws 4000.250.

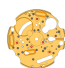



3600.010.HGF
52.  **Battery 395**

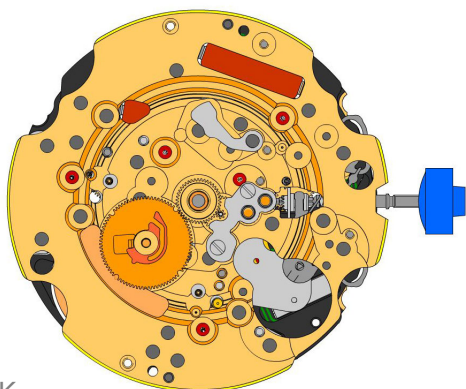
3601.109.G
53.  **Bridle +**
Bridle held by 1 screw 4000.250.

4000.250
54.  **Screw**









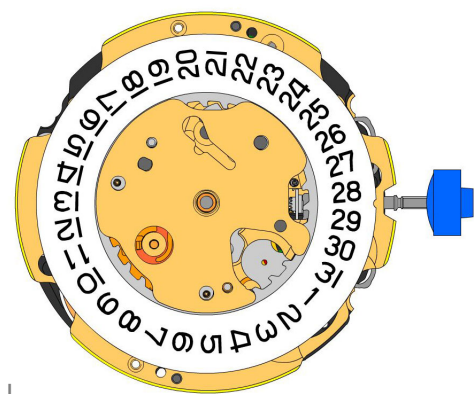
J

2000.574.G 55.		Main plate
3004.164 56.		Setting wheel
3004.164 57.		Setting wheel
3007.054.CO 58.		Minute wheel

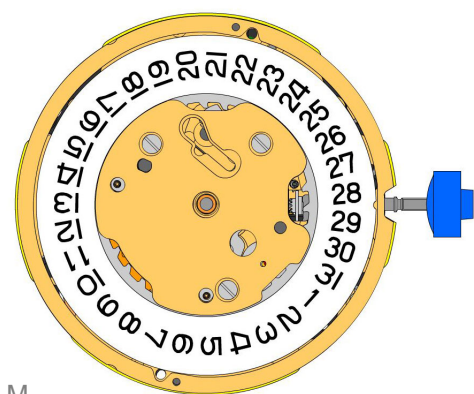


K

2130.143 59.		Minute train bridge Minute train bridge held by 2 screws 4000.305.
4000.305 60.		Screw
3301.241 61.		Hour wheel (Aig.1)
3315.016 62.		Friction spring
3004.224.CO 63.		Date indicator driving wheel
3500.049 64.		Date jumper



L



M

3504.208.AB.1.A
65.



Date indicator (standard)
Nick of the indicator at 3 o'clock.

2130.141
66.



Date indicator maintaining plate
Date indicator maintaining plate held by 1 screw 4000.250.

3905.070
67.



Date jumper spring
Insert the date jumper spring in the provided opening.

2130.140.G
68.



Date mechanism maintaining plate
Date mechanism maintaining plate held by 2 screws 4000.250.

4000.250
69.



Screw

3506.072.G
70.



Dial support

8200
71.



Moebius 8200

9014
72.



Moebius 9014

124
73.

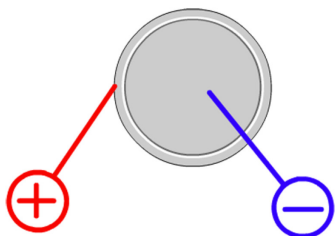


Jismaa 124

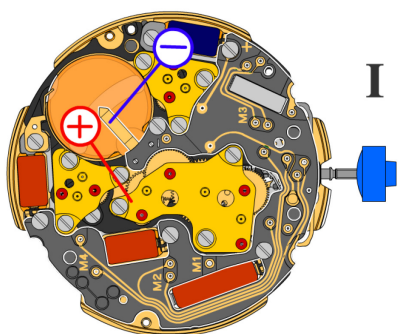
9020
74.



Moebius 9020

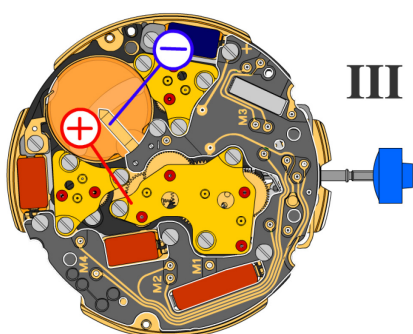


Battery	395
Voltage	1.55 V



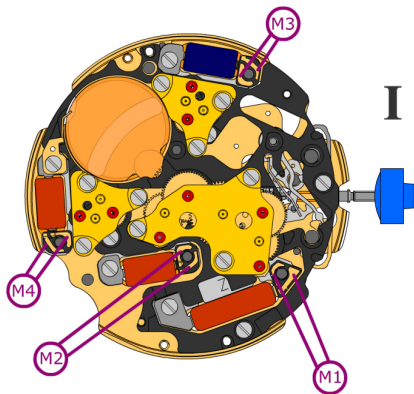
*Setting stem in position I, calendar not in gear,
60 s measuring interval for rate and consumption:*

Typical consumption	1.32 μA
Maximal consumption	1.65 μA
Rate	-10s/M. .. +20s/M.
Lower working voltage limit	1.20 V



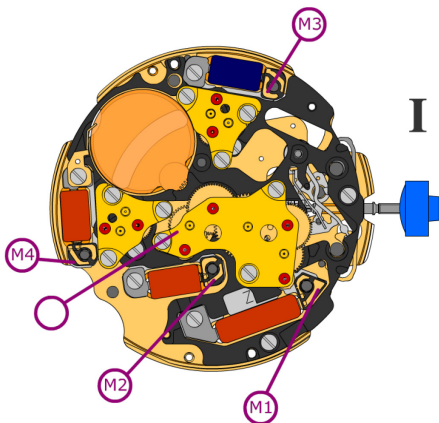
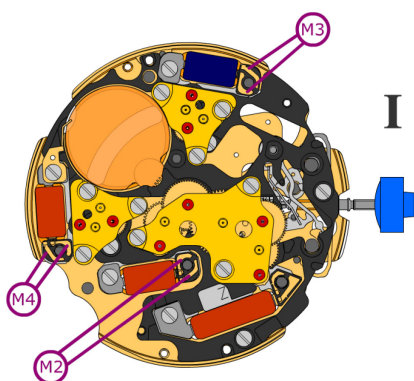
Setting stem in position III, 60 s measuring interval:

Typical consumption	0.10 μA
Maximal consumption	0.30 μA

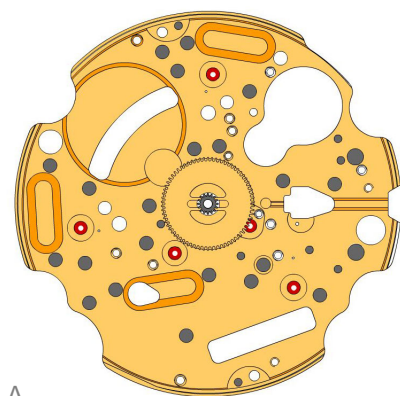

Coil resistance M1 **1.90 k Ω .. 2.10 k Ω**

Coil resistance M2 **1.68 k Ω .. 1.88 k Ω**

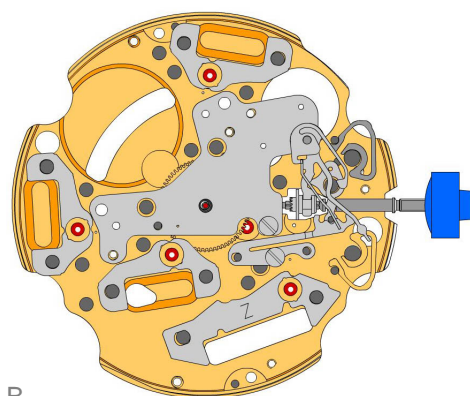
Coil resistance M3 **1.68 k Ω .. 1.88 k Ω**

Coil resistance M4 **1.68 k Ω .. 1.88 k Ω**

Coil isolation M1/M2/M3/M4 **∞ k Ω**

Signal generator (4.9 ms, 8 Hz):

Lower working voltage limit
M2/M3/M4 **1.20 V**



A



B

2000.574.G

1.



Main plate

3305.275.CO

2.



Cannon pinion with driver (Aig.1)

2030.039.CO

3.



Centre bridge

Centre bridge held by 1 screw 4000.250.

4000.250

4.



Screw

3001.055.FI

5.



Sliding pinion

3000.177.CO

6.



Setting stem

3017.049

7.



Setting lever

3905.049

8.



Setting lever jumper (3 positions)

Setting lever jumper held by 1 screw 4000.250.

4000.250

9.



Screw

3015.081

10.



Yoke (3 positions)

Parts 3015.081 and 3905.067 must be exchanged together.

3905.067

11.



Yoke spring

Tensioning the spring arm.

3406.030

12.



Pusher jumper B

Put the grey jumper between the two posts on the further side.

3406.038

13.



Pusher jumper A

Put the yellow jumper between the two posts on the closer side.

3622.040

14.



Stator

Mark [Z] on stator.

3622.039

15.



Stator (counter 6h, 9h, chrono)

3622.039

16.



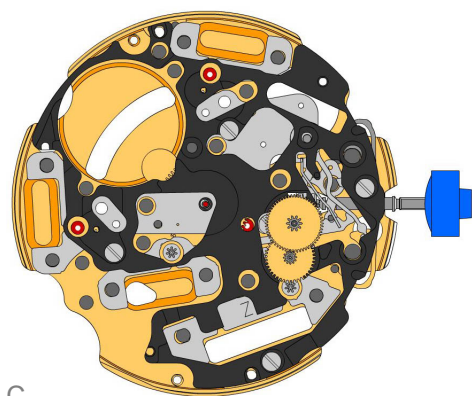
Stator (counter 6h, 9h, chrono)

3622.039

17.



Stator (counter 6h, 9h, chrono)



C


3603.079
18.  Plastic bracket
Plastic bracket held by 4 screws 4000.250.

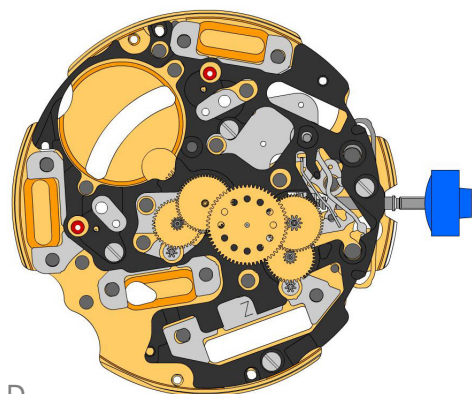
4000.250
19.  Screw

3715.094.RK
20.  Rotor


3715.094.RK
21.  Rotor


3147.046.CO
22.  Intermediate wheel

3136.142.CO
23.  Second wheel (long)

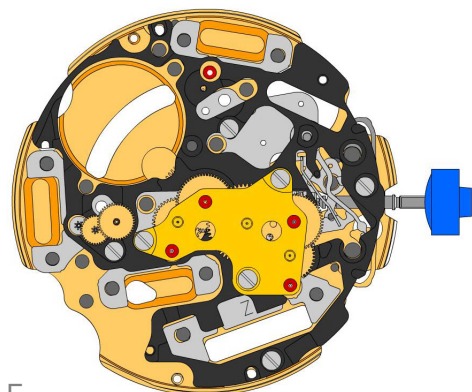


D


3147.047.CO
24.  Intermediate wheel (chrono)

3136.143.CO
25.  Chronograph wheel (Aig.1)

3122.056.CO
26.  Third wheel



E

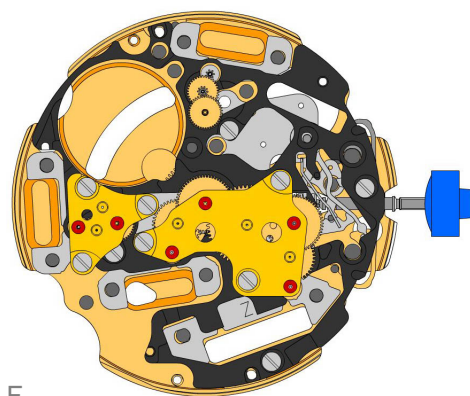
2020.148.G
27.  Train wheel bridge
Train wheel bridge held by 3 screws 4000.250.

4000.250
28.  Screw






3715.095.RK
29.  Rotor

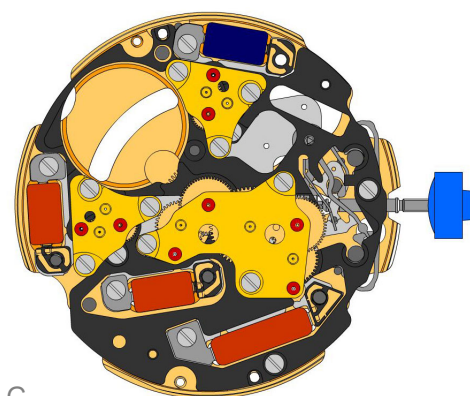
3147.048.CO
30.  Intermediate wheel (counter)

3402.006.CO
31.  Minute counting wheel










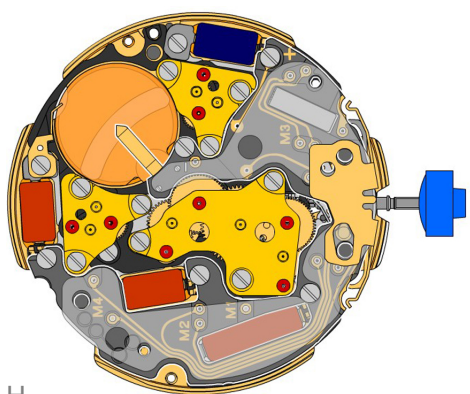
F

2020.149.G 32.		Counter train wheel bridge Counter train wheel bridge held by 3 screws 4000.250.
4000.250 33.		Screw
3715.095.RK 34.		Rotor
3147.053.CO 35.		Intermediate wheel (counter 1/10sec)
3402.016.CO 36.		Counting wheel 1/10 sec










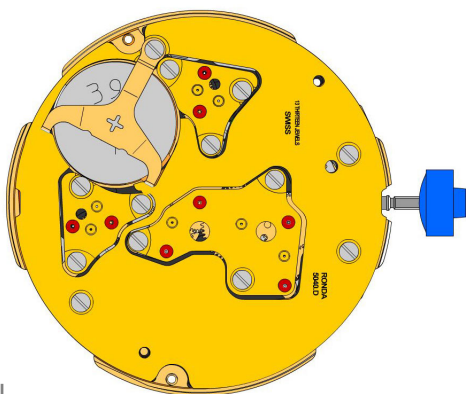
G

2020.149.G 37.		Counter train wheel bridge Counter train wheel bridge held by 3 screws 4000.250.
4000.250 38.		Screw
3621.053.RK 39.		Coil Attention: Please hold the coil only on the grey coil core. Coil held by 1 screw 4000.250.
3621.054.RK 40.		Coil (counter 9h, chrono) Attention: Please hold the coil only on the grey coil core. Coil held by 1 screw 4000.250.
3621.054.RK 41.		Coil (counter 9h, chrono) Attention: Please hold the coil only on the grey coil core. Coil held by 1 screw 4000.250.
3621.055.RK 42.		Coil (counter 6h) Attention: Please hold the coil only on the grey coil core. Coil held by 1 screw 4000.250.
4000.250 43.		Screw



H

3601.118 44.		Contact strip Contact strip held by 1 screw 4000.250.
4000.250 45.		Screw
3603.034 46.		Battery insulator
3612.144.5040 47.		Electronic module Electronic module held by 5 screws 4000.248. Electronic measurements may be realised now.
4000.248 48.		Screw
3603.069 49.		Circuit insulator
3601.107.G 50.		Pusher contact spring

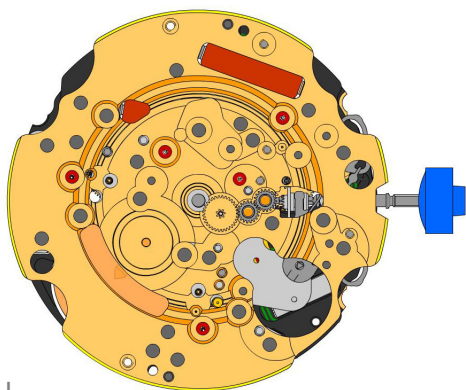


2130.137.G.M01.5040D
51.  Electronic module cover
Electronic module cover held by 3 screws 4000.250.

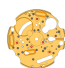



3600.010.HGF
52.  Battery 395

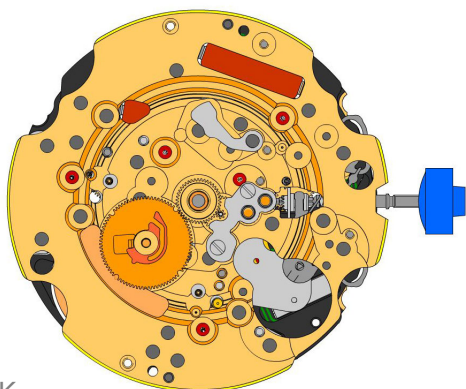
3601.109.G
53.  Bridle +
Bridle held by 1 screw 4000.250.

4000.250
54.  Screw









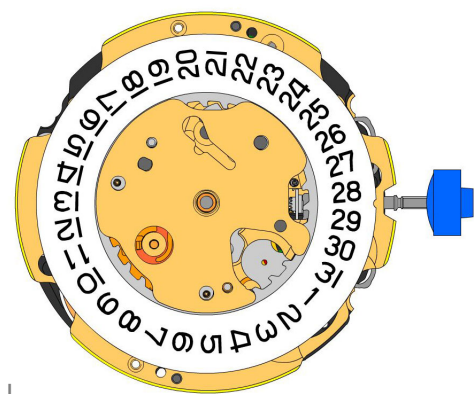
J

2000.574.G 55.		Main plate
3004.164 56.		Setting wheel
3004.164 57.		Setting wheel
3007.054.CO 58.		Minute wheel

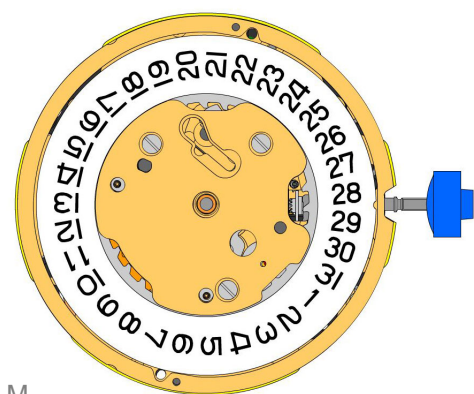


K

2130.143 59.		Minute train bridge Minute train bridge held by 2 screws 4000.305.
4000.305 60.		Screw
3301.241 61.		Hour wheel (Aig.1)
3315.016 62.		Friction spring
3004.224.CO 63.		Date indicator driving wheel
3500.049 64.		Date jumper



L



M

3504.208.AB.1.A
65.



Date indicator (standard)
Nick of the indicator at 3 o'clock.

2130.141
66.



Date indicator maintaining plate
Date indicator maintaining plate held by 1 screw 4000.250.

3905.070
67.



Date jumper spring
Insert the date jumper spring in the provided opening.

2130.140.G
68.



Date mechanism maintaining plate
Date mechanism maintaining plate held by 2 screws 4000.250.

4000.250
69.



Screw

3506.072.G
70.



Dial support

8200
71.



Moebius 8200

9014
72.



Moebius 9014

124
73.

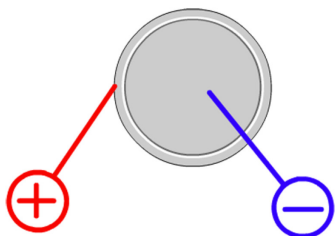


Jismaa 124

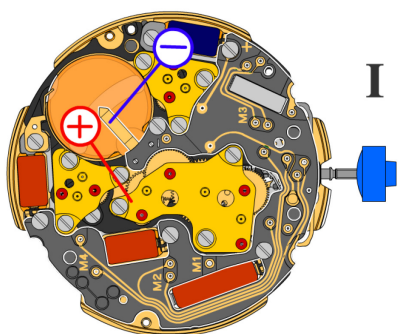
9020
74.



Moebius 9020

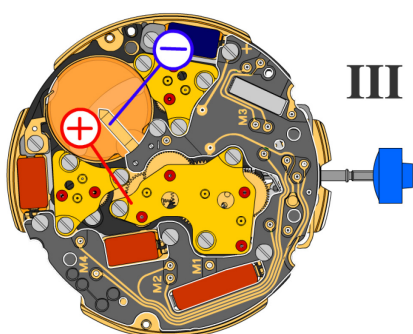


Battery	395
Voltage	1.55 V



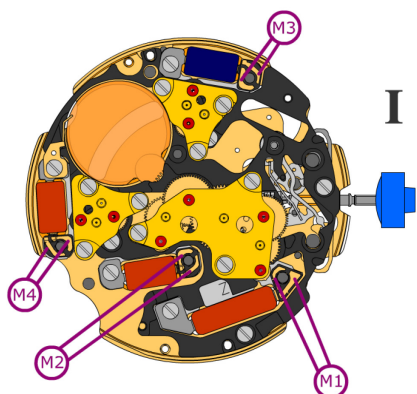
*Setting stem in position I, calendar not in gear,
60 s measuring interval for rate and consumption:*

Typical consumption	1.32 μA
Maximal consumption	1.65 μA
Rate	-10s/M. .. +20s/M.
Lower working voltage limit	1.20 V



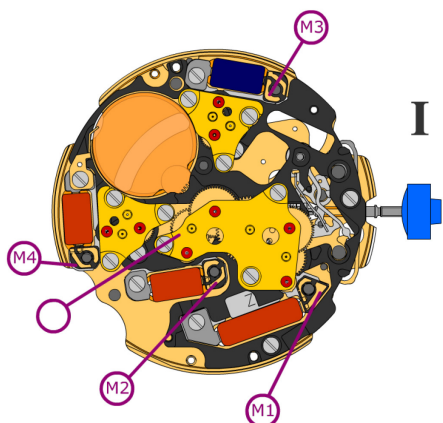
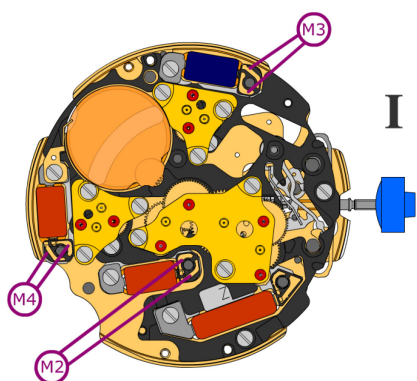
Setting stem in position III, 60 s measuring interval:

Typical consumption	0.10 μA
Maximal consumption	0.30 μA


Coil resistance M1 **1.90 k Ω .. 2.10 k Ω**

Coil resistance M2 **1.68 k Ω .. 1.88 k Ω**

Coil resistance M3 **1.68 k Ω .. 1.88 k Ω**

Coil resistance M4 **1.68 k Ω .. 1.88 k Ω**

Coil isolation M1/M2/M3/M4 **∞ k Ω**

Signal generator (4.9 ms, 8 Hz):

Lower working voltage limit
M2/M3/M4 **1.20 V**