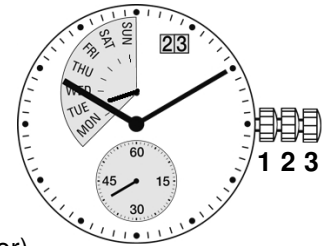
	Casing information (T2)	Dokument MVT093e	Seite 1 / 1
	RONDA mastertech 7004.P	Änd.Datum 26.02.2009	Änd.Stand 01

→ RTC, RHK, RTH, ERMANO, Pine Precision, Time & Time, 5250

Information & references

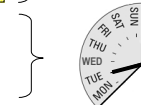
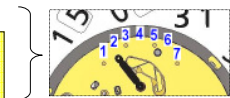
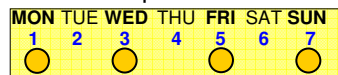
- Case → case drawings
- Dial, date window and day indicator → dial drawings
- Hand fitting heights & specifications for hands → hand fitting height drawings



Hand setting procedure

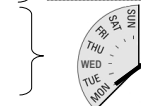
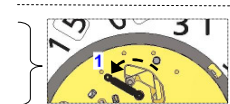
1. Day indicator: (no quick mode is available for the adjustment of the day indicator)

- Prior to the removal of the day indicator working-hand it is important to remember the day, indicated on the movement. (example: TUE = Tuesday).
- After the dial setting, the day indicator-hand must be set, pointing to same day (example: TUE = Tuesday).



It is also possible to proceed as follows:

- Prior to the removal of the day indicator working-hand and prior to the placement of the dial, the crown must be turned clockwise (stem position 3) until the day indicator working-hand jumps back into the left position.
- After the dial-setting, the day indicator-hand must be set, pointing to MON.



2. Hour- und minute hand:

- **Stem position 2** (quick mode): The date must be set to **02** by turning the crown anti clockwise.
- **Stem position 3**: Turn the crown clockwise until the date changes from **02** to **03**.
- Set the hands to 12.00 h

Calendar changing phases

Date: 1½ - 2 hours. Day of week: ¾ - 2 hours (after the date change)

Casing tool 7000-7999 A2 (part nr. H 7xxx.1A2)

For Hand setting



Hand setting

Maximal force:

Hour and minute hands: max. 40N

All other hands: max. 30N

The movement needs to be supported for hand setting.

Casing tool 7000-7999 T (part nr. H 7xxx.1T)

For removal of stem



Stem removal

For removal of the stem, the stem must be pushed into position 1 (pressed in) prior to apply pressure to the setting lever.

Remark: During the date setting with quick mode (stem position 2), the speed may not exceed 5 days/second.

Information re. BIG DATE

An extreme acceleration in setting the date with quick mode can induce a false date indication.

The synchronization is re-established by setting the date from 01 till 31 (stem in Pos. 2).

erstellt, bzw. geändert und geprüft		überprüft und freigegeben	
Datum: 06.03.2008	Visum/Initialen:	Datum: 06.03.2008	Visum/Initialen: