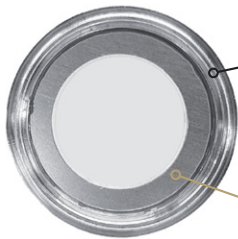


RONDA startech 4120.B / 5130.D / 5130.B



2 spring loaded contacts
 2 Kontaktfedern
 2 ressort contact

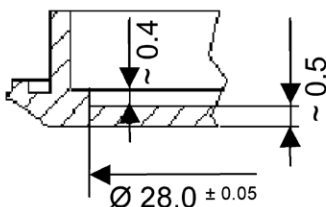


case back
 Gehäuseboden
 fond de boîte

piezo element
 KBS-27DA-5A



detail A



Piezo Ceramic Elements
KBS Series

Features

- Wide variety of tones by connecting to IC
- Low current consumption, thin and light design
- High reliability and no contact noise

Applications

- Clocks, Electronic Calculators, Cameras
- Equipment Using Microcontrollers (Microwave Ovens, TVs, Stereos, Automobiles, etc.)
- Telecommunications (Facsimile Machines, Telephones)
- Electronic Medical Instruments

How to Order

KBS - 20 DA - 7 A □ - 1

① ② ③ ④ ⑤ ⑥ ⑦

① Series
 ② Diameter (mm)
 ③ Appearance (Disc-Shaped Buzzer)
 ④ Resonant Frequency
 ⑤ 2-Electrode Type
 (A: Element Only, C: With Lead)
 ⑥ Metal (Blank: Brass)
 ⑦ Option Spec. (Lead-wire Spec. etc.)

Dimensions (Unit: mm)

*See specifications for values of A, B, C, etc.

Specifications (A type)

Part Number	Resonant Frequency [kHz]	Resonant Impedance [Ω]	Capacitance [pF]	Dimensions (mm)					
				Metal Disc (øA)	Ceramic Disc (øB)	Electrode (øC)	Total Thickness (T)	Metal Disc Thickness (t)	Metal Disc Material
KBS-27DA-5A	4.6±0.5	200	20,000±30%	27.0±0.1	20.2±0.3	(19.0)	0.53±0.1	0.25±0.03	Brass

* Measured at 120Hz, all others at 1kHz

IMPORTANT:
 The piezo element must be glued to the case back.

WICHTIG:
 Das Piezo-Element muss auf den Gehäuseboden geklebt werden.

IMPORTANT:
 L'élément piezo doit être collé sur le fond de boîte.

erstellt, bzw. geändert und geprüft		überprüft und freigegeben	
Datum: 01.06.2007	Visum/Initialen:	Datum: 01.06.2007	Visum/Initialen: