

ONE CASE *Many options*



RONDA *startech 5000*

be creative
define your style...



12 great styles to choose from.
Why would you opt for just one?

RONDA **startech**

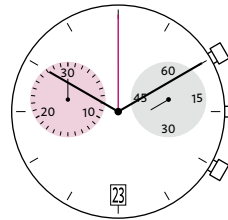
One case – many options

Series 5000 Chronographs, 12 1/2”

28.00 mm, Movement Height 4.40 mm



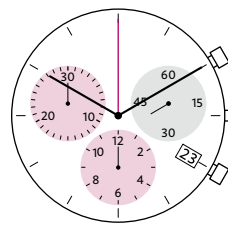
Cal. 5021.D
Chrono, Date
Battery-life 54 months
SM – 10 Jewels / Gilt
SP – 5 Jewels / Nickel



9h 30 Min.
3h Small Second
6h Date



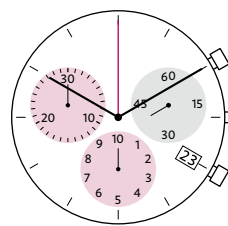
Cal. 5030.D
Chrono, Date
Battery-life 54 months
SM – 13 Jewels / Gilt
SP – 6 Jewels / Nickel



6h 12 Hours
9h 30 Min.
3h Small Second
4h Date



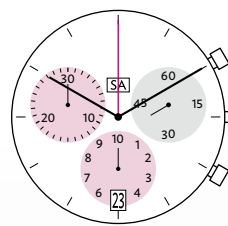
Cal. 5040.D
Chrono, Date
Battery-life 54 months
SM – 13 Jewels / Gilt
SP – 6 Jewels / Nickel



1/10s
6h 1/10 Sec. / 10 Hours
9h 30 Min.
3h Small Second
4h Date



Cal. 5040.E
Chrono, Day-Date
Battery-life 54 months
SM – 13 Jewels / Gilt

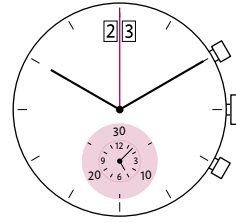


1/10s
6h 1/10 Sec. / 10 Hours
9h 30 Min.
3h Small Second
6h Date
12h Day





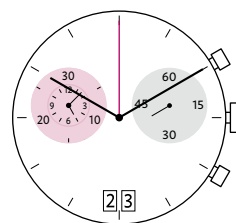
Cal. 5010.B
Chrono, Big Date
 Battery-life 54 months
 SM – 10 Jewels / Gilt



23
6h 30 Min. / 12 Hours
12h Big Date



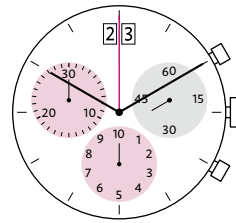
Cal. 5020.B
Chrono, Big Date
 Battery-life 54 months
 SM – 10 Jewels / Gilt
 SP – 5 Jewels / Nickel



23
9h 30 Min. / 12 Hours
3h Small Second
6h Big Date



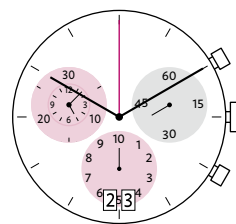
Cal. 5040.B
Chrono, Big Date
 Battery-life 54 months
 SM – 13 Jewels / Gilt
 SP – 6 Jewels / Nickel



1/10s **23**
6h 1/10 Sec. / 10 Hours
9h 30 Min.
3h Small Second
12h Big Date



Cal. 5050.B
Chrono, Big Date
 Battery-life 54 months
 SM – 13 Jewels / Gilt
 SP – 6 Jewels / Nickel



1/10s **23**
6h 1/10 Sec.
9h 30 Min. / 12 Hours
3h Small Second
6h Big Date

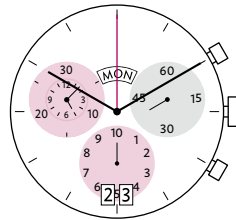
- Choose from 12 styles with various calendar systems
- All Chronos with identical movement height with slight differences in hand heights
- Pushers with perceptible click
- Possible pusher angles at 0°, 10°, 15°, 20° or 30°

- Power-saving mechanism
- Easy handling for consumers
- Buzzer for Alarm requires extra 1.25 mm in case back
- For caliber 5040.F please refer to technical drawings regarding hand height and correctors



Cal. 5050.C
Chrono, Day, Big Date
 Battery-life 54 months
 SM – 13 Jewels / Gilt

Cal. 5051.C
 same as 5050.C except:
 6 h Day and 12 h Big Date

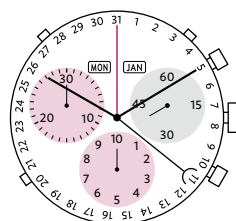


1/10s 23

6h 1/10 Sec.
9h 30 Min. / 12 Hours
3h Small Second
6h Big Date
12h Day



Cal. 5040.F
Chrono, Day-Date, Month
 Battery-life 54 months
 SM – 13 Jewels / Gilt

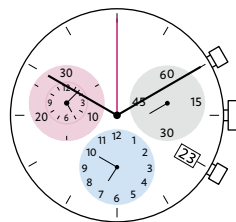


1/10s

6h 1/10 Sec. / 10 Hours
9h 30 Min.
3h Small Second
12h Day & Month
 Date by Hand



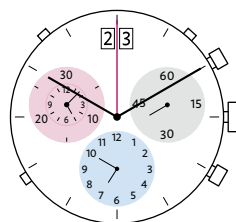
Cal. 5130.D
Chrono-Alarm, Date
 Battery-life 48 months
 SM – 13 Jewels / Gilt
 SP – 6 Jewels / Nickel



9h 30 Min. / 12 Hours
6h Alarm
3h Small Second
4h Date



Cal. 5130.B
Chrono-Alarm, Big Date
 Battery-life 48 months
 SM – 13 Jewels / Gilt



23

9h 30 Min. / 12 Hours
6h Alarm
3h Small Second
4h Date

ONE CASE

Many options



#rondamovement



RONDA AG

Hauptstrasse 10
CH-4415 Lausen
Switzerland
Phone +41 61 926 50 00
info@ronda.ch
ronda.ch

RONDA Ltd.

Unit 19, 27/F, Tower B
Southmark, 11 Yip Hing Street
Wong Chuk Hang, Aberdeen, Hong Kong
Phone +852 2542 0249
info@ronda.com.hk

ronda.ch