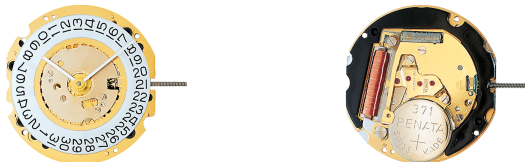


Caliber 704 – 10½"



Product Specifications

Analog quartz movement

Line	normtech
Caliber	704
Size	10½"
Version Swiss Made	5 Jewels / gold plated
Version Swiss Parts	1 Jewels / nickel plated
Standard battery life	60 months
Standard hand fitting height	1

Features

- Very long battery life
- Repairable metal watch movement
- Power saving mechanism with pulled out stem:
Reduction of consumption approximately 70%

Functions

- Date
- 2 hands

Caliber 704 – 10½"

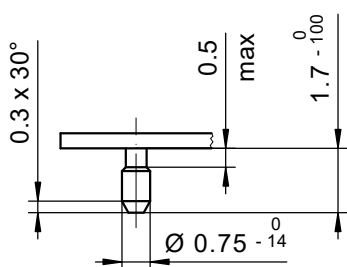
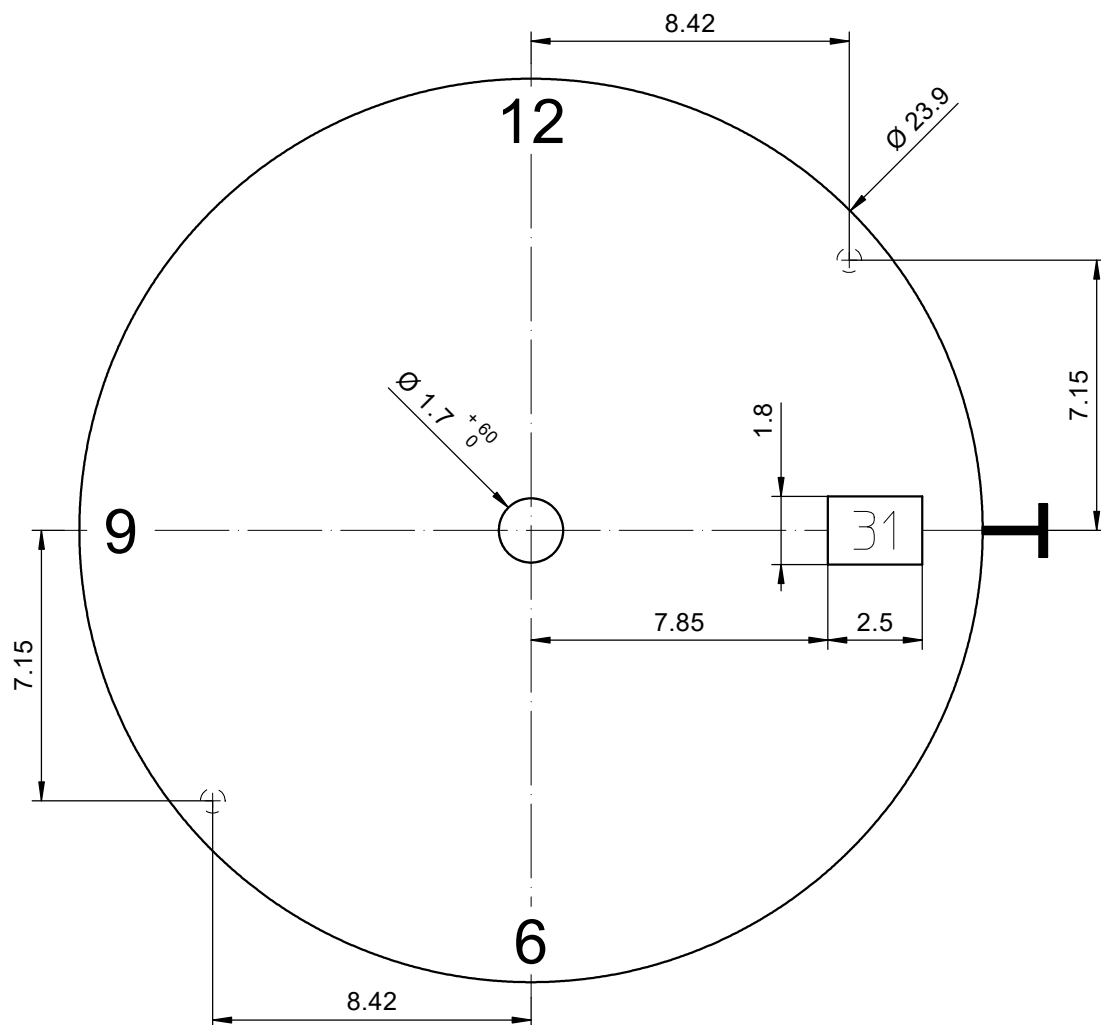
Technical Specifications

Diameter Total	23.90 mm
Case fitting	23.30 mm
Movement height	2.50 mm
Height over standard battery	2.75 mm
Movement rest	0.30 mm
Height over stem	1.00 mm
Length of stem travel	0.90 mm
Stem thread	0.90 mm
Useful torque second – typical	8 µNm
Useful torque minute – typical	400 µNm
Operating temperature	0-50 °C
Instantaneous rate	-10/ +20 sec/month
Resistance to magnetic fields	18.8 Oe
Resistance against shock	NIHS 91-10

Battery Specifications

Standard battery	No. 371
Standard battery life	60 months
Battery voltage	1.5 V
Current consumption – typical	0.96 µA (Date Mechanism not in Gear)
Current consumption – maximum	1.35 µA (Date Mechanism not in Gear)

<div>Cage Uhrwerkgestell 10½"</div> <div>Frame</div>		Issued	19.05.2000	cw
		Modified	08.02.2019	dh5221
		Released	YES	
		Mod. No.	39888	
		Tolerance	±20 µm	
		Scale	10 : 1	Page 1/1 A3
RONDA	702, 703, 704, 705	Sous réserve de modifications Aenderungen vorbehalten Modifications reserved		
		No.	5000.231	13



Epaisseur du cadran selon hauteur de l'aiguillage
Zifferblattdicke gemäss Zeigerwerkhöhen
Dial thickness according to hand fitting heights

Tige	Date
Stellw.	Datum
Stem	Date
3H	3H

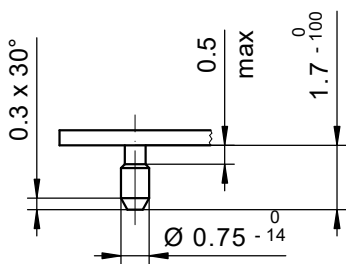
Cadran
Zifferblatt 10½"
Dial

Issued	14.12.2006	cw
Modified	13.03.2020	dh5221
Released	YES	
Mod. No.	7795	
Tolerance	±20 µm	
Scale	10 : 1	Page 1/1 A4

RONDA 505, 505S, 704, 705

Sous réserve de modifications
Änderungen vorbehalten
Modifications reserved

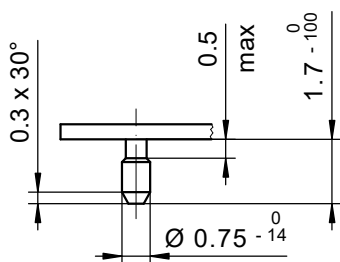
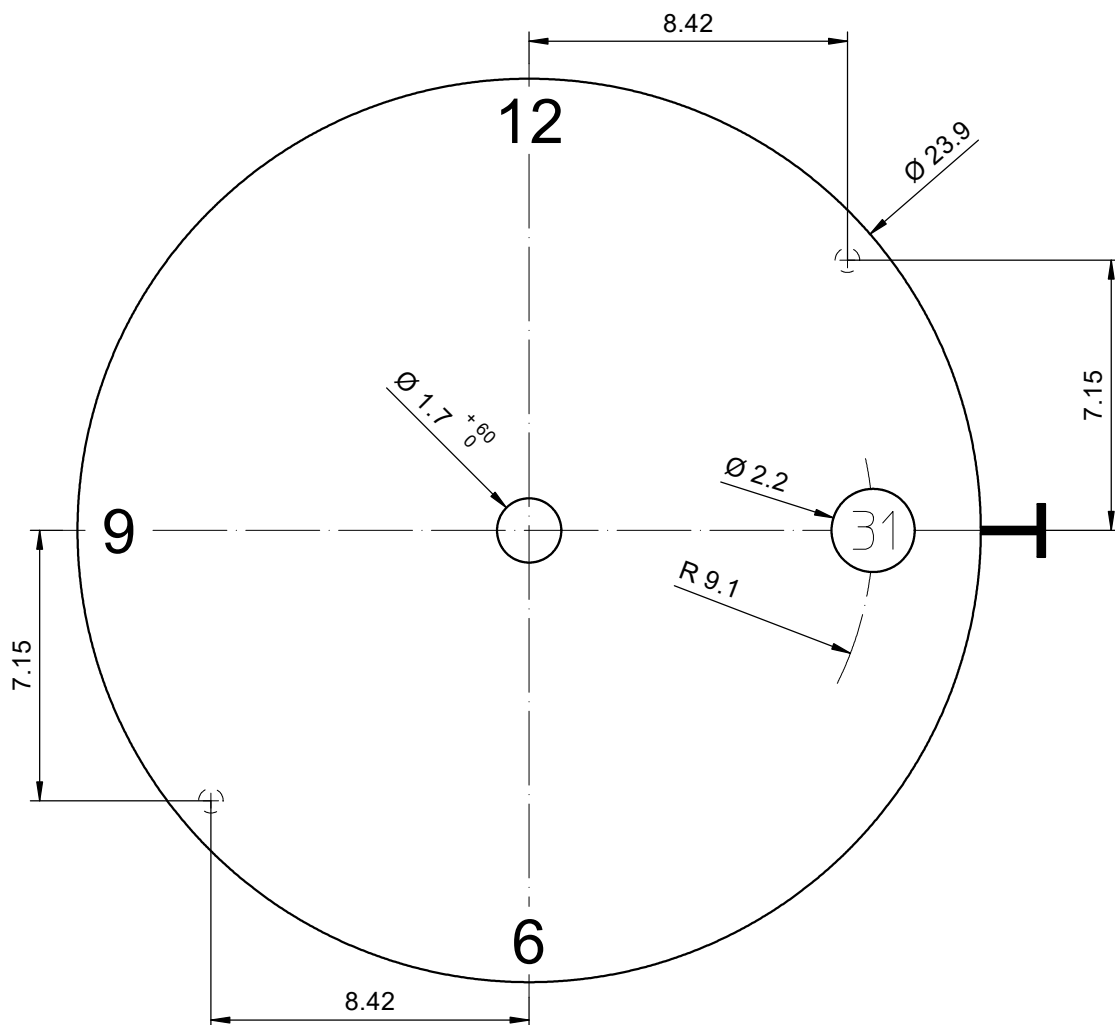
No. 5010.360 08



Tige	Date
Stellw.	Datum
Stem	Date
3H	4H
	<input type="text"/>

Issued	05.06.2007	cm
Modified	13.03.2020	dh5221
Released	YES	
Mod. No.	7795	
Tolerance	±20 µm	
Scale	10 : 1	Page 1/1 A4

Sous réserve de modifications Aenderungen vorbehalten Modifications reserved		
No.	5010.376	03



Epaisseur du cadran selon hauteur de l'aiguillage
Zifferblattdicke gemäss Zeigerwerkhöhen
Dial thickness according to hand fitting heights

Tige	Date
Stellw.	Datum
Stem	Date
3H	3H

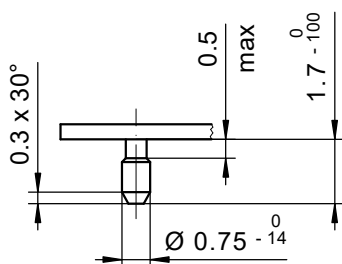
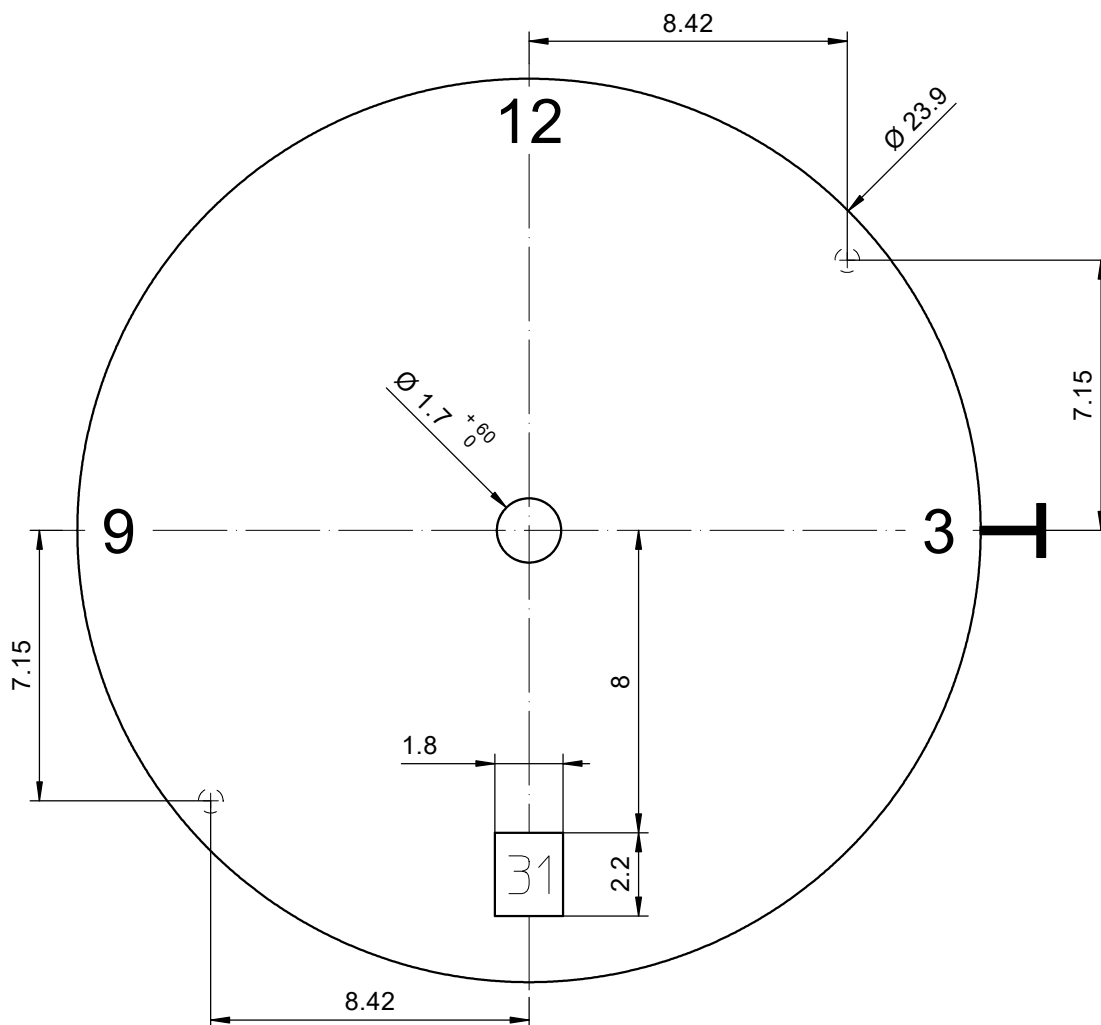
Cadran
Zifferblatt 10½"
Dial

Issued	14.12.2006	cw
Modified	13.03.2020	dh5221
Released	YES	
Mod. No.	7795	
Tolerance	±20 µm	
Scale	10 : 1	Page 1/1 A4

RONDA 505, 505S, 704, 705

Sous réserve de modifications
Änderungen vorbehalten
Modifications reserved

No. 5010.422 08



Epaisseur du cadran selon hauteur de l'aiguillage
Zifferblattdicke gemäss Zeigerwerkhöhen
Dial thickness according to hand fitting heights

Tige	Date
Stellw.	Datum
Stem	Date
3H	6H

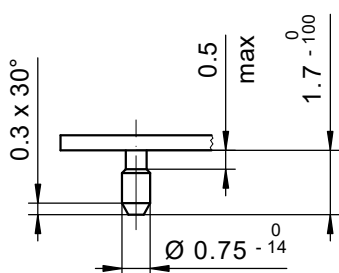
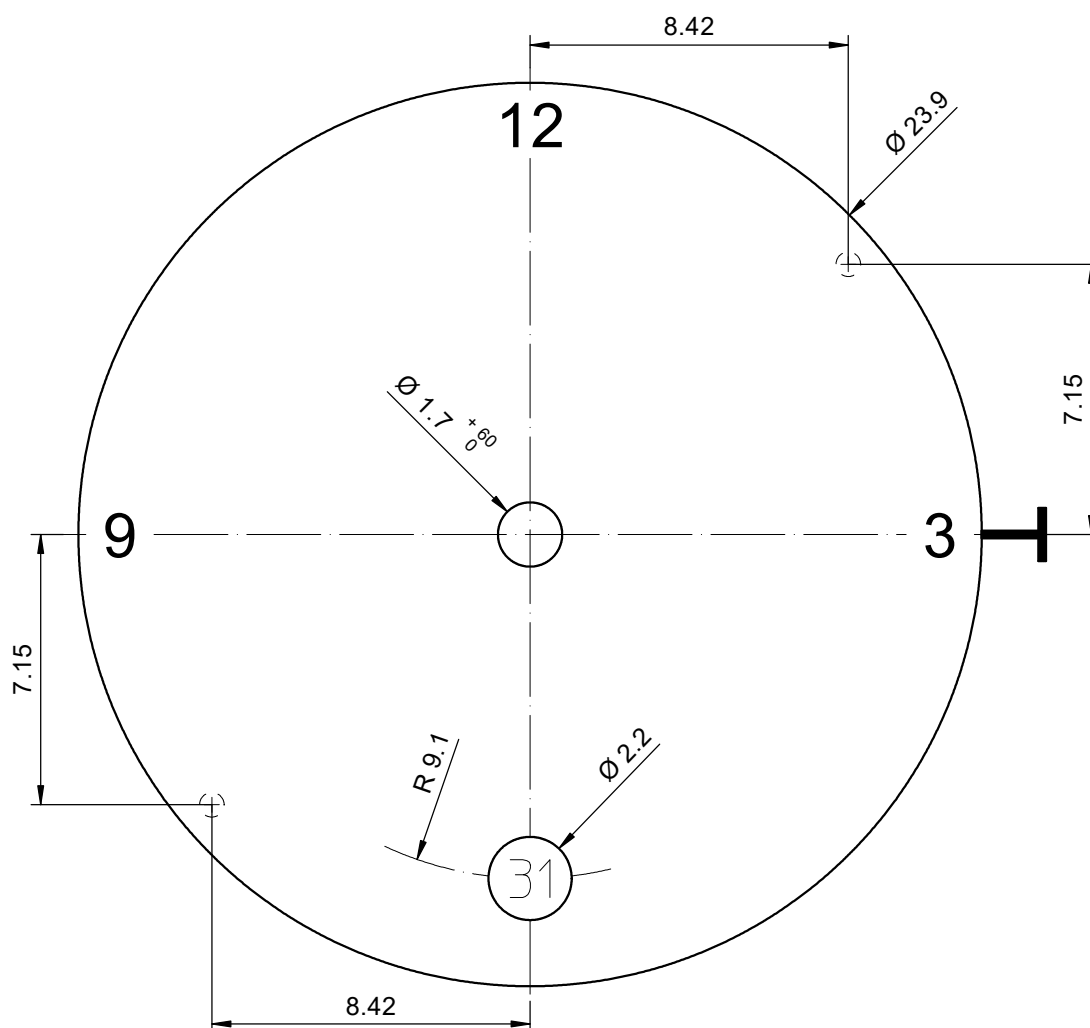
Cadran
Zifferblatt 10 1/2"
Dial

Issued	13.12.2006	rh
Modified	13.03.2020	dh5221
Released	YES	
Mod. No.	7795	
Tolerance	±20 µm	
Scale	10 : 1	Page 1/1 A4

RONDA 505, 505S, 704, 705

Sous réserve de modifications
Aenderungen vorbehalten
Modifications reserved

No. 5010.423 07



Epaisseur du cadran selon hauteur de l'aiguillage
Zifferblattdicke gemäss Zeigerwerkhöhen
Dial thickness according to hand fitting heights

Tige	Date
Stellw.	Datum
Stem	Date
3H	6H

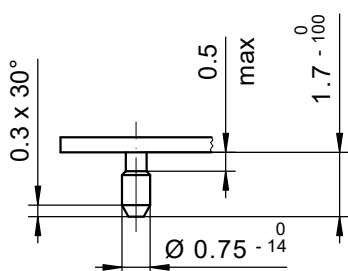
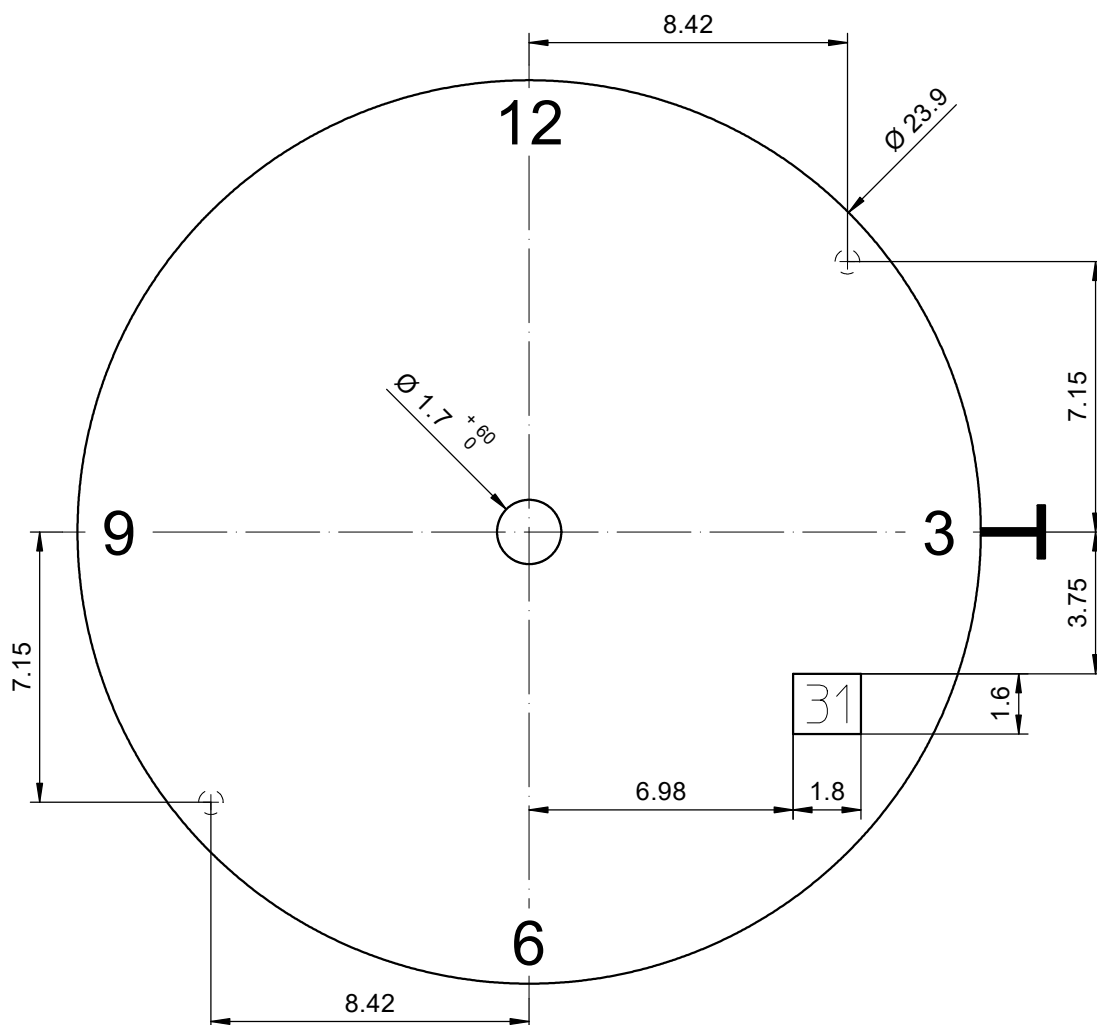
Cadran
Zifferblatt 10½"
Dial

Issued	14.12.2006	cw
Modified	13.03.2020	dh5221
Released	YES	
Mod. No.	7795	
Tolerance	±20 µm	
Scale	10 : 1	Page 1/1 A4

RONDA 505, 505S, 704, 705

Sous réserve de modifications
Aenderungen vorbehalten
Modifications reserved

No. 5010.426 07



Epaisseur du cadran selon hauteur de l'aiguillage
Zifferblattdicke gemäss Zeigerwerkhöhen
Dial thickness according to hand fitting heights

Tige	Date
Stellw.	Datum
Stem	Date
3H	4H

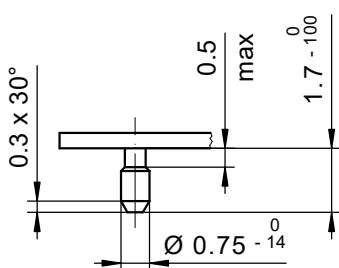
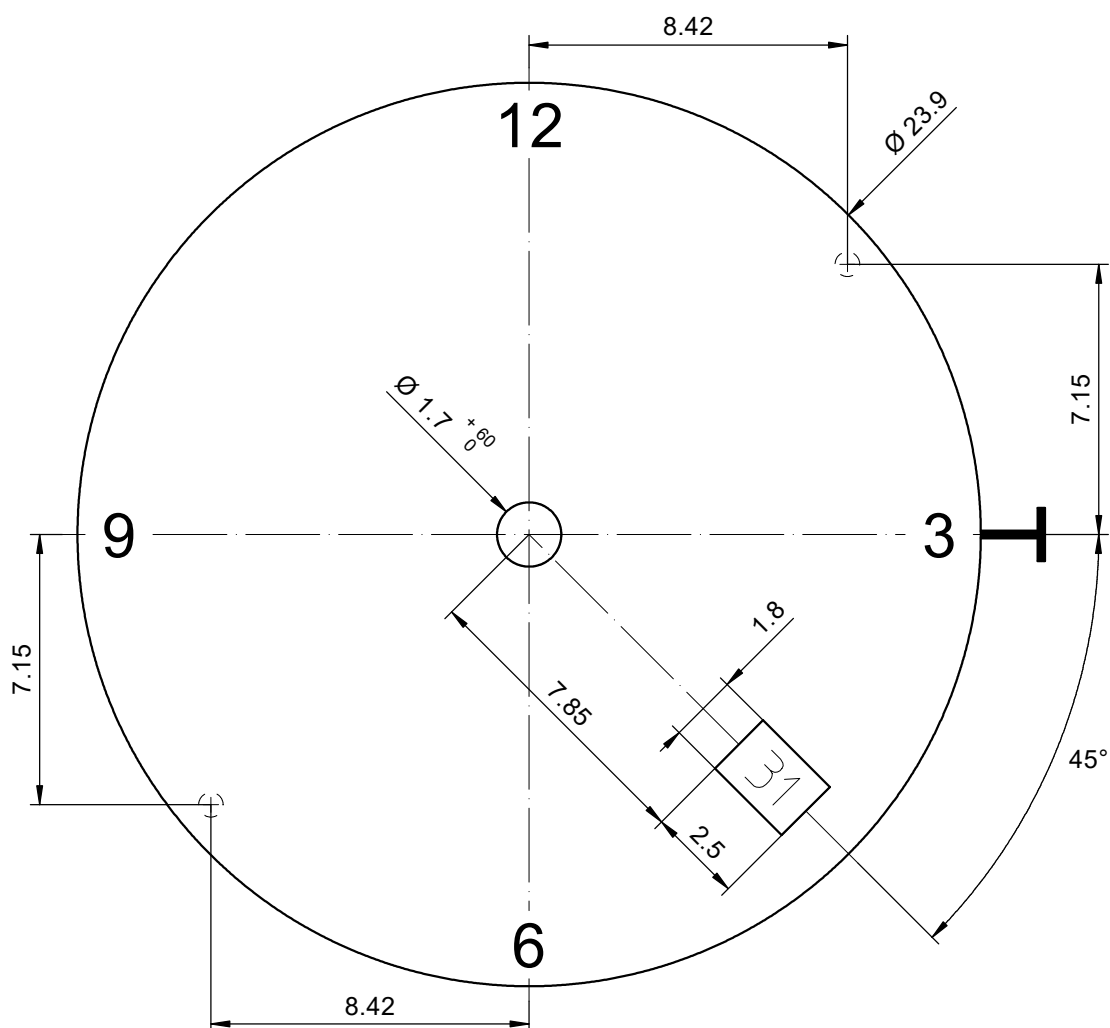
Cadran
Zifferblatt 10 1/2"
Dial

Issued	14.12.2012	cw
Modified	13.03.2020	dh5221
Released	YES	
Mod. No.	7795	
Tolerance	±20 µm	
Scale	10 : 1	Page 1/1 A4

RONDA 505, 505S, 704, 705

Sous réserve de modifications
Aenderungen vorbehalten
Modifications reserved

No. 5010.578 04



Epaisseur du cadran selon hauteur de l'aiguillage
Zifferblattdicke gemäss Zeigerwerkhöhen
Dial thickness according to hand fitting heights

Tige	Date
Stellw.	Datum
Stem	Date
3H	4½H

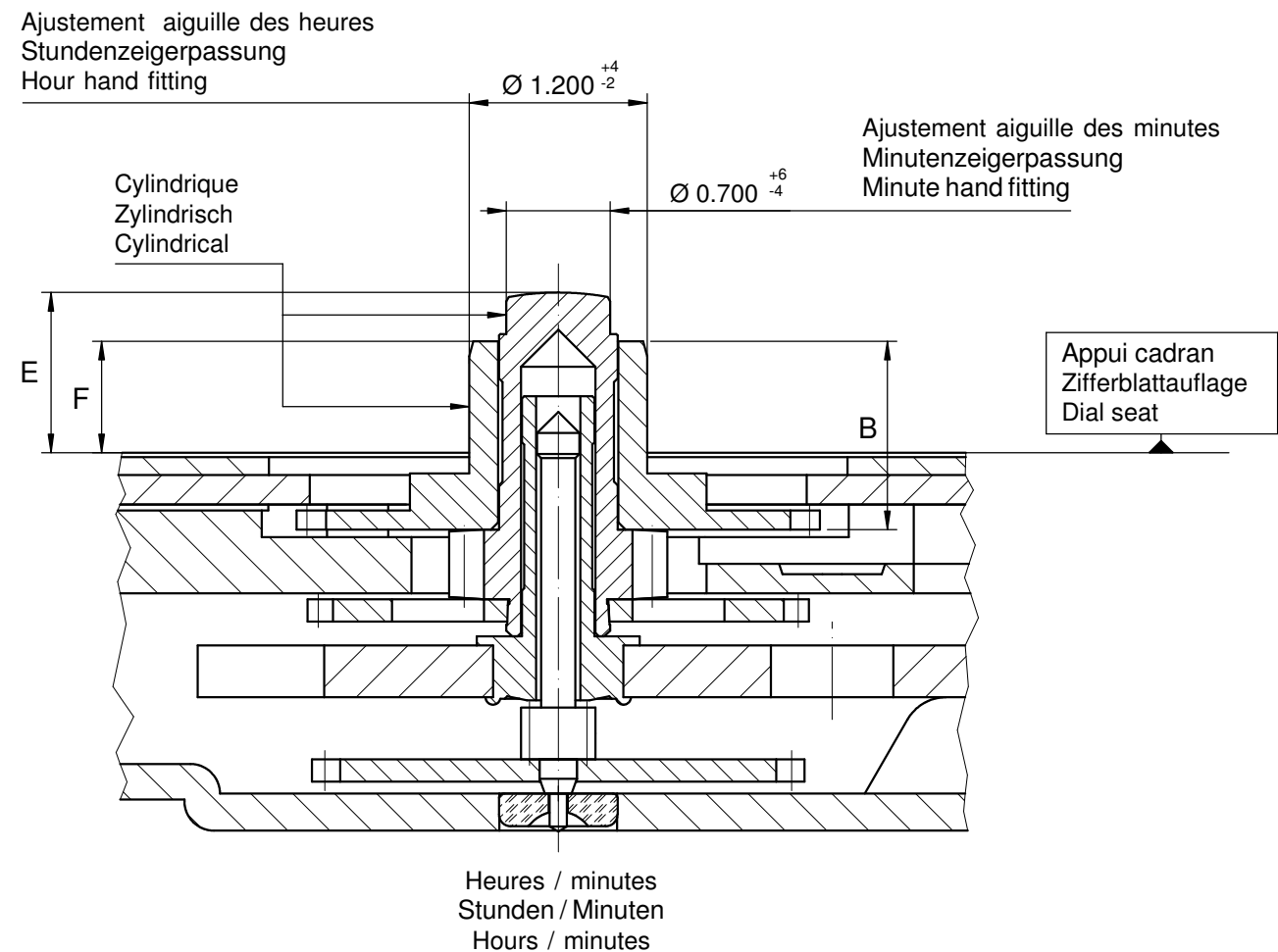
Cadran
Zifferblatt 10½"
Dial

Issued	14.12.2006	cw
Modified	13.03.2020	dh5221
Released	YES	
Mod. No.	7795	
Tolerance	±20 µm	
Scale	10 : 1	Page 1/1 A4

RONDA 505, 505S, 704, 705

Sous réserve de modifications
Änderungen vorbehalten
Modifications reserved

No. 5010.583 04

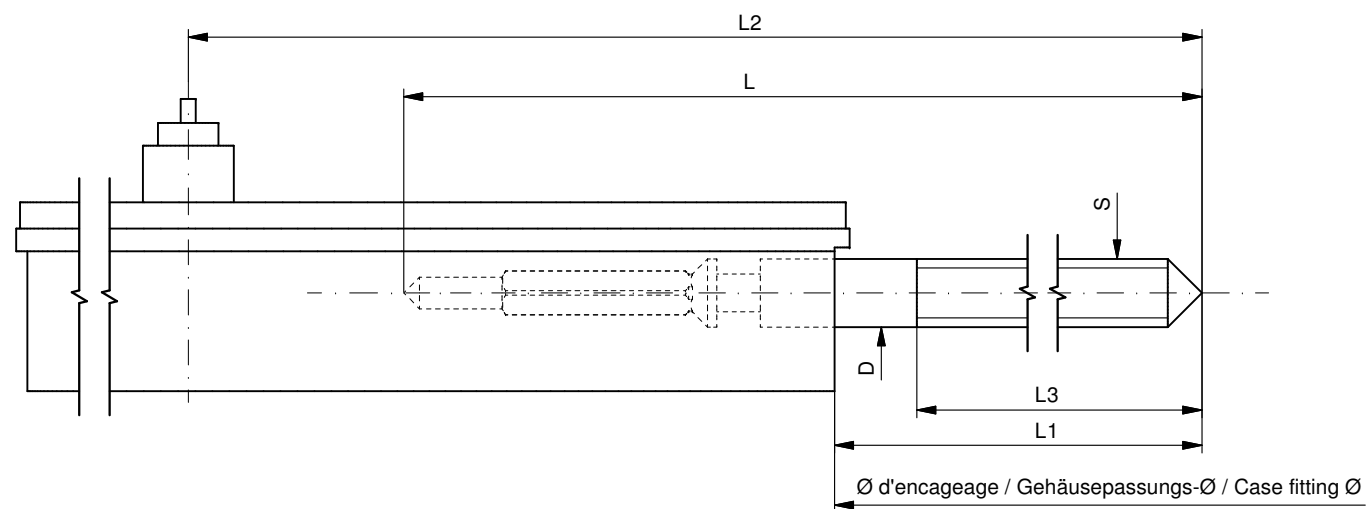


Aiguillage no Zeigerwerkhöhe Nr. Hand fitting height No	Dépassement Höhe über Zifferblattauflage Height over dial seat			Longueur Länge Length		Epaisseur max. (peinture comprise) Max. Dicke (inkl. Farbe) Max. thickness (paint included)			
	Chaussée Minutenrohr Cannon-pinion	Roue des heures Stundenrad Hour wheel		Roue des heures Stundenrad Hour wheel		Cadran Zifferblatt Dial			Aiguilles Zeiger Hands
						Sous l'aiguille des minutes Unter Minutenzeiger Under minute hand	Sous l'aiguille des heures Unter Stundenzeiger Under hour hand		
1	1.08	0.75		1.27		0.70	0.40		0.15
2	1.28	0.95		1.47		0.85	0.60		0.15
3	1.63	1.23		1.75		1.10	0.90		0.15

		Aig. des minutes Minutenzeiger Minute hand	Aig. des heures Stundenzeiger Hour hand	Lors de la pose d'aiguilles, le mouvement doit être soutenu. Beim Zeigersetzen muss das Werk abgestützt werden. The movement needs to be supported for hand setting.
mg	max.	30	30	Masse / Masse / Weight *
µNm	max.	0.70	0.70	Balourd / Unwucht / Unbalance *
gmm ²	max.	-	-	Inertie / Massenträgheit / Inertia *
N	max.	40	40	Force de chassage / Aufpresskraft / Force

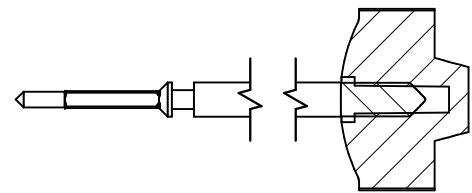
Aiguillages Zeigerwerkhöhen 7¾", 8¾", 10½", 11½" Hand fitting heights		Issued	07 Feb 2008	dh
		Modified	19 Nov 2014 ÄA 13831	mc
		Released	Yes	
		Tolerance	µm	
		Scale	20 : 1 (A3H)	
RONDA	704, 714, 774, 784	Sous réserve de modifications Änderungen vorbehalten Modifications reserved		
		No.	3316.120	07

* En cas de données différentes, veuillez contacter le service après-vente * Bei abweichenden Werten, bitte technischen Kundendienst anfragen * In case of different values, please contact the customer service



Tige de travail (intégrée dans le mouvement)
Arbeitsstellwelle (im Werk eingebaut)
Working stem (implemented in the movement)

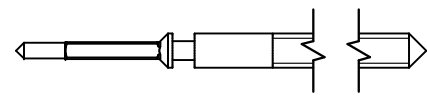
No. d'article Artikelnummer Part number	L	L1	L2	L3	S	D
3000.131.CO	17.24	8.63	20.28	12.00	0.90	0.90



Couleur de la couronne Kronenfarbe Crown color	gris grau gray
Code	UN 7008

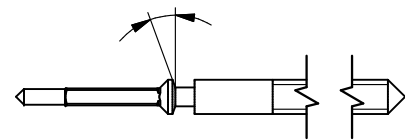
Tige (normale) / Stellwelle (normal) / Stem (normal)

No. d'article Artikelnummer Part number	L	L1	L2	L3	S	D
3000.131	17.24	8.63	20.28	12.00	0.90	0.90
3000.152	19.24	10.63	22.28	14.00	0.90	0.90
3000.151	25.00	16.39	28.04	18.76	0.90	0.90
3000.138	32.00	23.39	35.04	20.28	0.90	0.90



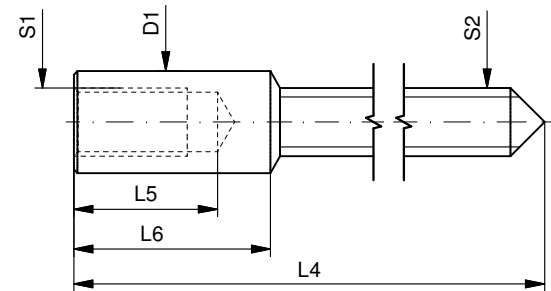
Tige (à arracher)
Stellwelle (Ausreissversion)
Stem (extractable version)

No. d'article Artikelnummer Part number	L	L1	L2	L3	S	D
3000.133	17.24	8.63	20.28	12.00	0.90	0.90



Rallonge de tige / Stellwelle Verlängerung / Stem extension

No. d'article Artikelnummer Part number	L4	L5 (min)	L6	S1	S2	D1
3000.040	12.00	1.90	2.60	0.90	0.90	1.35



Couronne normale Normale Krone Normal crown	

Couronne vissée Geschraubte Krone Screwed crown	
Force ⇄ min. Kraft ⇄ min. Force ⇄ min.	10 N
Force ⇄ max. Kraft ⇄ max. Force ⇄ max.	15 N

Tige (dimensions / forces) Stellwelle (Dimensionen / Kräfte) Stem (dimensions / forces)		Issued		13 Aug 2012	ds5212
		Modified		17 Mär 2017 ÄA 34582	mg5224
		Released		YES	
		Tolerance		---	
		Scale		10:1 (A3)	
RONDA	702, 703, 704, 705, 706.1, 706.3, 706B, 708	Sous réserve de modifications Änderungen vorbehalten Modifications reserved			
		No.	5030.004	02	

User's Manual English
Movements Caliber

RONDA powertech

- 585
- 505
- 515

RONDA normtech

- 774 - 6003.D
- 775 - 6004.D
- 704
- 705
- 784
- 785
- 714
- 715
- 715Li

RONDA slimtech

- 1005
- 1006
- 1009
- 1015
- 1016
- 1019

RONDA xtratech

- 6003.B
- 6004.B
- 7002.B
- 7003.B
- 7004.B

You have decided to buy a watch, which was assembled by a watchmaker using a Ronda movement. Please note that no watches are produced or distributed under the Ronda brand.

In case of repairs, guarantee claims and questions concerning the functioning of a watch, purchasers and consumers should contact their retailer or the watch manufacturer, for which the relevant information can be found in the sales or guarantee documentation provided with the watch.

Cal. 585 / 785:
Battery type: 362/SR721SW

Cal. 774 / 775 / 784:
Battery type: 364/SR621SW

Cal. 505 / 515 / 704 / 705 / 714 / 715:
Battery type: 371/SR920SW

Cal. 6003.D / 6004.D / 6003.B / 6004.B:
Battery type: 373/SR916SW

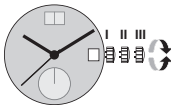
Cal. 1005 / 1006 / 1009 / 1015 / 1016 / 1019:
Battery type: 341/SR714SW

Cal. 7002.B / 7003.B / 7004.B:
Battery type: 381/SR1120SW

Cal. 715Li:
Battery type: CR 2016

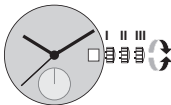
Precision: +20/-10 seconds per month

Cal. 585	Cal. 6003.D
Cal. 505	Cal. 6004.D
Cal. 515	Cal. 6003.B
	Cal. 6004.B



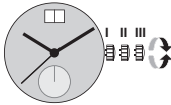
- Pos. I Position of rest (watch running)**
- Pos. II Quick-change correction for date**
The date can also be corrected during the day-changing phase between 10 pm and midnight. The date of the following day has to be set, because no automatic date change takes place at midnight.
- Pull the crown out to position II (watch still running).
 - Turn the crown clockwise until the required date appears.
Cal. 6003.D & 6004.D:
 - Turn the crown until the required date appears.
 - Push the crown back into position I.
- Pos. III Setting the time**
- Pull the crown out to position III (watch stopped).
 - Turn the crown, until the current time is displayed (remember the 24-hour cycle).
 - Push the crown back into position I.

Cal. 774	Cal. 715Li
Cal. 775	
Cal. 704	Cal. 1005
Cal. 705	Cal. 1006
Cal. 784	Cal. 1009
Cal. 785	Cal. 1015
Cal. 714	Cal. 1016
Cal. 715	Cal. 1019



- Pos. I Position of rest (watch running)**
- Pos. II Quick-change correction for date**
Blocking time for the quick-change day correction is from approx. 9.30 pm and midnight.
- Pull the crown out to position II (watch still running).
 - Turn the crown until the current date appears.
 - Push the crown back into position I.
- Pos. III Setting the time**
- Pull the crown out to position III (watch stopped).
 - Turn the crown, until the current time is displayed (remember the 24-hour cycle).
 - Push the crown back into position I.

Cal. 7002.B
Cal. 7003.B
Cal. 7004.B



- Pos. I Position of rest (watch running)**
- Pos. II Quick-change correction for date**
The date can also be changed during the day-changing phase between approx. 8.00 pm and midnight. The date of the following day has to be set, because no automatic date change takes place at midnight.
- Pull the crown out to position II (watch still running).
 - Turn the crown until the current date appears.
 - Push the crown back into position I.
- Pos. III Setting the time**
- Pull the crown out to position III (watch stopped).
 - Turn the crown, until the current time is displayed (remember the 24-hour cycle).
 - Push the crown back into position I.



10 1/2'''



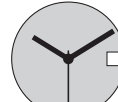
702



703



704



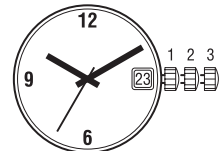
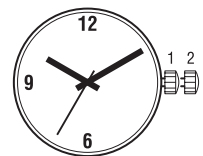
705

Funktionen

Fonctions

Functions

Kaliber Calibre Caliber	Stellwellenpos. Pos. de tige Stem position	Funktionen Fonctions Functions
702/703	1	Normale Position / Position normale / Running position
	2	Zeiger stellen, Sekunden-Stopp mit Unterbruch der Motorimpulse Mise à l'heure, stop-seconde avec interruption des impulsions moteur Hand setting, stop-second with interruption of motor impulses
704/705	1	Normale Position / Position normale / Running position
	2	Datumkorrektur / Correction de la date / Date correction
	3	Zeiger stellen, Sekunden-Stopp mit Unterbruch der Motorimpulse Mise à l'heure, stop-seconde avec interruption des impulsions moteur Hand setting, stop-second with interruption of motor impulses



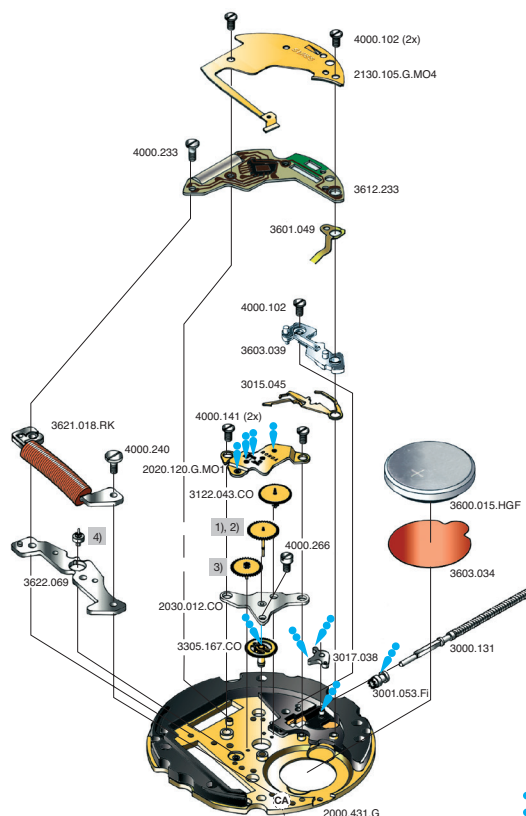
Batterie

Pile

Battery

Kaliber Calibre Caliber	Batterie Pile Battery	Spannung Voltage Tension	Artikelnummer RONDA Numero d'article RONDA Part number RONDA
702-705	371 / SR920SW	1.55 V	3600.015.HGF

10 1/2''' 702, 703, 704, 705



Code: Beispiel CA / exemple CA / exemple CA

Cal. 703	Werkseite / Côté mouvement / Movement side		
Nr. / No. / No.	Bestandteile	Fournitures	Spare Parts
2000.431.G	Werkplatte	Platine	Main Plate
2030.012.CO	Räderwerkbrücke	Pont rouage	Train w. bridge
2130.105.G.MO4	Zentrumbrücke	Pont centre	Centre bridge
3000.131	Modul-Abdeckp.	Couvre module	Module cover pl.
3001.053.FI	Stellwelle	Tige	Stem
3015.045	Kupplungstrieb	Pignon coulant	Sliding pinion
3017.038	Kuppl.-triebhebel	Bascule	Yoke
3122.043.CO	Winkelhebel	Tirette	Setting lever
3122.043.CO	Kleinbodenrad	Roue moyenne	Third wheel
1)	Sekundenrad	Roue secondes	Second-wheel
3)	Zwischenrad	Roue interméd.	Intermed. wheel
3305.167.CO	Minutenrohr	Chaussée	Cannon pinion
3600.015.HGF	Batterie	Pile	Battery
3601.049	Batterie-Kontakt	Bride contact	Battery contact
3603.034	Batterie-Isolation	Isolateur pile	Battery insulation
3603.039	Deckplatte/ Ste.	Couvre mécan.	Setting lev. cover
3612.233	Modul	Module	Module
3621.018.RK	Spule	Bobine	Coil
3622.069	Stator	Stator	Stator
4)	Rotor	Rotor	Rotor
4000.102	Schraube	Vis	Screw
4000.141	Schraube	Vis	Screw
4000.233	Schraube	Vis	Screw
4000.240	Schraube	Vis	Screw
4000.266	Schraube	Vis	Screw

Cal. 703, 705

Bis Juni 2014
Jusqu' en Juin 2014
Untill June 2014

Ab Juli 2014
A partir de Juillet 2014
From July 2014

Code	2. Buchstabe ... A Second letter ... A 2 ^{ème} chiffre: ... A	2. Buchstabe: ab B Second letter: from B 2 ^{ème} chiffre: à partir de B
1)	3136.087.CO	3136.212.CO
3)	3147.019.CO	3147.092.CO
4)	3715.030.RK	3715.139.RK

Die obigen 3 Teile bilden jeweils eine Gruppe. Deshalb sind die 3 Teile jeder Gruppe nicht einzeln gegeneinander austauschbar.

Les 3 fournitures ci-dessous forment un groupe individuel. C'est pourquoi les 3 fournitures de chaque groupe ne sont pas interchangeables.

The 3 parts mentioned above are forming an individual group. Therefore the 3 parts of each group are not interchangeable.

Abweichungen / Divergences / Deviations

Cal. 705	Werkseite / Côté mouvement / Movement side		
3015.040	Kuppl.-triebhebel	Bascule	Yoke

Cal. 702	Werkseite / Côté mouvement / Movement side		
2)	Sekundenrad	Roue secondes	Second-wheel
3)	Zwischenrad	Roue interméd.	Intermed. wheel
3305.176.CO	Minutenrohr	Chaussée	Cannon pinion
4)	Rotor	Rotor	Rotor

Cal. 704	Werkseite / Côté mouvement / Movement side		
3015.040	Kuppl.-triebhebel	Bascule	Yoke
2)	Sekundenrad	Roue secondes	Second-wheel
3)	Zwischenrad	Roue interméd.	Intermed. wheel
3305.176.CO	Minutenrohr	Chaussée	Cannon pinion
4)	Rotor	Rotor	Rotor

Cal. 702, 704

Bis Juni 2014
Jusqu' en Juin 2014
Untill June 2014

Ab Juli 2014
A partir de Juillet 2014
From July 2014

Code	2. Buchstabe ... A Second letter ... A 2 ^{ème} chiffre: ... A	2. Buchstabe: ab B Second letter: from B 2 ^{ème} chiffre: à partir de B
2)	3136.093.CO	3136.196.CO
3)	3147.019.CO	3147.092.CO
4)	3715.030.RK	3715.139.RK

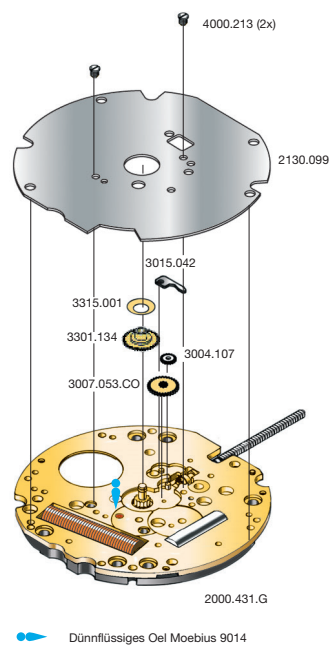
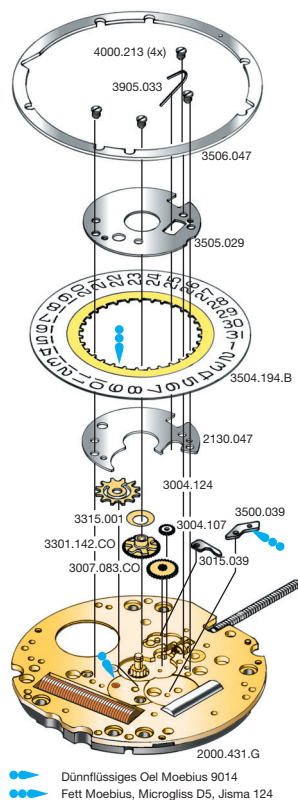
Die obigen 3 Teile bilden jeweils eine Gruppe. Deshalb sind die 3 Teile jeder Gruppe nicht einzeln gegeneinander austauschbar.

Les 3 fournitures ci-dessous forment un groupe individuel. C'est pourquoi les 3 fournitures de chaque groupe ne sont pas interchangeables.

The 3 parts mentioned above are forming an individual group. Therefore the 3 parts of each group are not interchangeable.

10 1/2''' 704, 705

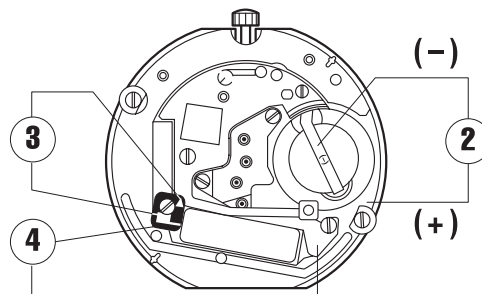
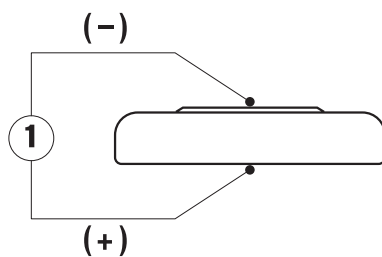
10 1/2''' 702, 703



Cal. 704, 705 Zifferblattseite / Côté cadran / Dial side			
Nr. / No. / No.	Bestandteile	Fournitures	Spare Parts
2130.047	Kalenderplatte	Plaque calend.	Date ind. plate
3004.107	Zeigerstellrad	Renvoi minuterie	Setting wheel
3004.124	Datummitn.-Rad	Renvoi entrain.	Ind. driving wheel
3007.083.CO	Wechselrad	Minuterie	Minute wheel
3015.039	Kup.triebbebel u.	Bascule dessous	Lower sec. yoke
3301.142.CO	Stundenrad	Canon	Hour wheel
3315.001	Spreizfeder	Clinquant 2 1/2	Washer 2 1/2
3500.039	Datumraste	Cliquet calend.	Date jumper
3504.194.B	Datumanzeiger	Bague	Date indicator
3505.029	Kal.-Abdeckplatte	Couvercle calend.	Date ind. guard
3506.047	Zifferblattstützring	Support cadran	Dial support
3905.033	Feder Datumraste	Ressort calend.	Date jumper spr.
4000.213	Schraube	Vis	Screw

Abweichungen / Divergences / Deviations

Cal. 702, 703 Zifferblattseite / Côté cadran / Dial side			
Nr. / No. / No.	Bestandteile	Fournitures	Spare Parts
2130.099	Zeigerwerkhaltep.	Plaque maintien	Maintaining plate
3007.053.CO	Wechselrad	Minuterie	Minute wheel
3015.042	Kup.-triebbebel u.	Bascule dessous	Lower sec. yoke
3301.134	Stundenrad	Canon	Hour wheel



Kaliber Calibre Caliber	Pos. Pos. Pos.	Einheit Unité Unit	Messwerte Valeurs mesurées Measured values	Kontrolle Contrôle Check	Bemerkungen Remarques Remarks
702-705	1	V	1,55	Batterie-Spannung Tension de la pile Battery voltage	Batterie herausnehmen und messen Enlever et mesurer la pile Remove battery for measuring
702-705	2	µA	0,70-1,35	Stromaufnahme (Kalender nicht im Eingriff) Consommation de courant (quantième non en prise) Current consumption (Date mechanism not in gear)	Ohne Batterie, mit externer Speisung Sans pile, avec alimentation externe Without battery, with external power supply
702-705	2	V	≤ 1,35	Funktionskontrolle bei Minimalspannung Contrôle de fonctionnement à tension minimale Check with lowest possible voltage	Ohne Batterie, mit externer Speisung Sans pile, avec alimentation externe Without battery, with external power supply
702-705	3	KΩ	1,75-1,95	Spulenwiderstand Résistance de la bobine Resistance of the coil	Ohne Batterie Sans pile Without battery
702-705	4	KΩ	∞	Spulenisolation Isolation de la bobine Coil insulation	Ohne Batterie Sans pile Without battery
702-705		Sek./Monat sec./mois sec./month	- 10/+ 20	Induktivsonde 60 Sek. Senseur inductif 60 sec. Inductive sensor 60 sec.	Mit Batterie Avec pile With battery

Einschalen / Werkzeuge

Emboîtage / outils

Casing / tools

Nr. H 70X.1A



Nr. H 70X.1T



SWISS MADE	SWISS PARTS

Zeigersetzen

Maximale Aufpresskraft:

- Stunden und Minutenzeiger: max. 40N
- Sekundenzeiger: max. 30N

Beim Zeigersetzen muss das Werk abgestützt werden.

Poser les aiguilles

Force de chassage maximale:

- Aiguilles des heure et des minutes: max. 40N
- Aiguille des secondes: max. 30N

Lors de la pose d'aiguilles, le mouvement doit être soutenu.

Hand setting

Maximal force:

- Hour and minute hands: max. 40N
- Second hand: max. 30N

The movement needs to be supported for hand setting.

Stellwelle entfernen

Beim Entfernen der Stellwelle muss sich die Stellwelle in Position 1 (gedrückt) befinden, bevor auf den Winkelhebel gedrückt wird.

Enlever la tige

En enlevant la tige, la tige doit se trouver en position 1 (poussée), avant de pousser sur la tirette.

Stem removal

For removal of the stem, the stem must be pushed into position 1 (pressed in) prior to apply pressure to the setting lever.