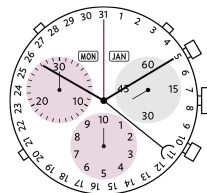
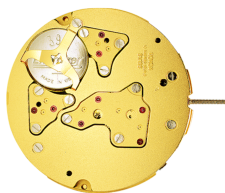
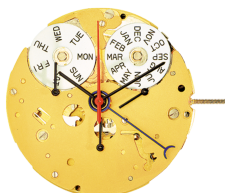


Caliber 5040.F – 12½"



Product Specifications

Analog quartz movement

Line startech

Caliber 5040.F

Size 12½"

Version Swiss Made 13 Jewels / gold plated

Standard battery life 54 months

Standard hand fitting height 3

Features

- Repairable metal watch movement
- Power saving mechanism with pulled out stem:
Reduction of consumption approximately 70%
- Very easy handling by two pushers

Functions

- 30 minute counter
- Center stop second (1/1 sec)
- 10 hour counter
- 1/10 seconds up to 30 minutes
- ADD and SPLIT functions
- Chronograph
- Day indicator
- Small second
- Month indicator
- Date by hand

Quartz Movements

Chronographs

RONDA startech

Caliber 5040.F – 12½"

Technical Specifications

Diameter Total	28.60 mm
Case fitting	28.00 mm
Movement height	4.40 mm
Height over standard battery	4.40 mm
Movement rest	0.60 mm
Height over stem	1.90 mm
Length of stem travel	0.90 mm
Stem thread	0.90 mm
Useful torque second – typical	6 µNm
Useful torque minute – typical	300 µNm
Useful torque center stop second – typical	7 µNm
Operating temperature	0 - 50 °C
Instantaneous rate	-10/ +20 sec/month
Resistance to magnetic fields	18.8 Oe
Resistance against shock	NIHS 91-10

Battery Specifications

Standard battery	No. 395
Standard battery life	54 months
Battery voltage	1.5 V
Current consumption – typical	1.32 µA (Date Mechanism not in Gear)
Current consumption – maximum	1.65 µA (Date Mechanism not in Gear)



Watch production

[Drawing Casing ring \(standard, PDF\)](#)
[Drawing Dial \(stem 3h, PDF\)](#)
[Drawing Hand fitting \(hand height 3, PDF\)](#)
[Drawing Stem](#)
[Casing information \(PDF\)](#)

User's manual

[User's manual \(PDF\)](#)

Watch repairs

[Technical instruction up to code L \(PDF\)](#)
[Technical instruction for code M \(PDF\)](#)
[Technical instruction as of code N \(PDF\)](#)