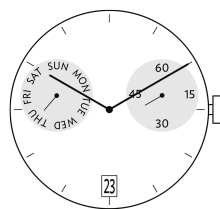


Quartz Movements

特别功能

朗达 超值系列

型号 X20 - 13□"



产品规格

指针式石英机芯

系列

超值系列

型号

X20

尺寸

13□"

版本 瑞士制造

0 钻石 / 银色

版本 瑞士零件 远东组装

0 钻石 / 银色

电池寿命

60 月

标准针高

1

特点

- 特长电池寿命
- 机芯可供修理
- 拉停把心省电功能：节省大概70%耗电

功能

- 特别功能
- 星期显示
- 日历
- 两针
- 小秒针

Quartz Movements

特别功能

朗达 超值系列

型号 X20 - 13□”

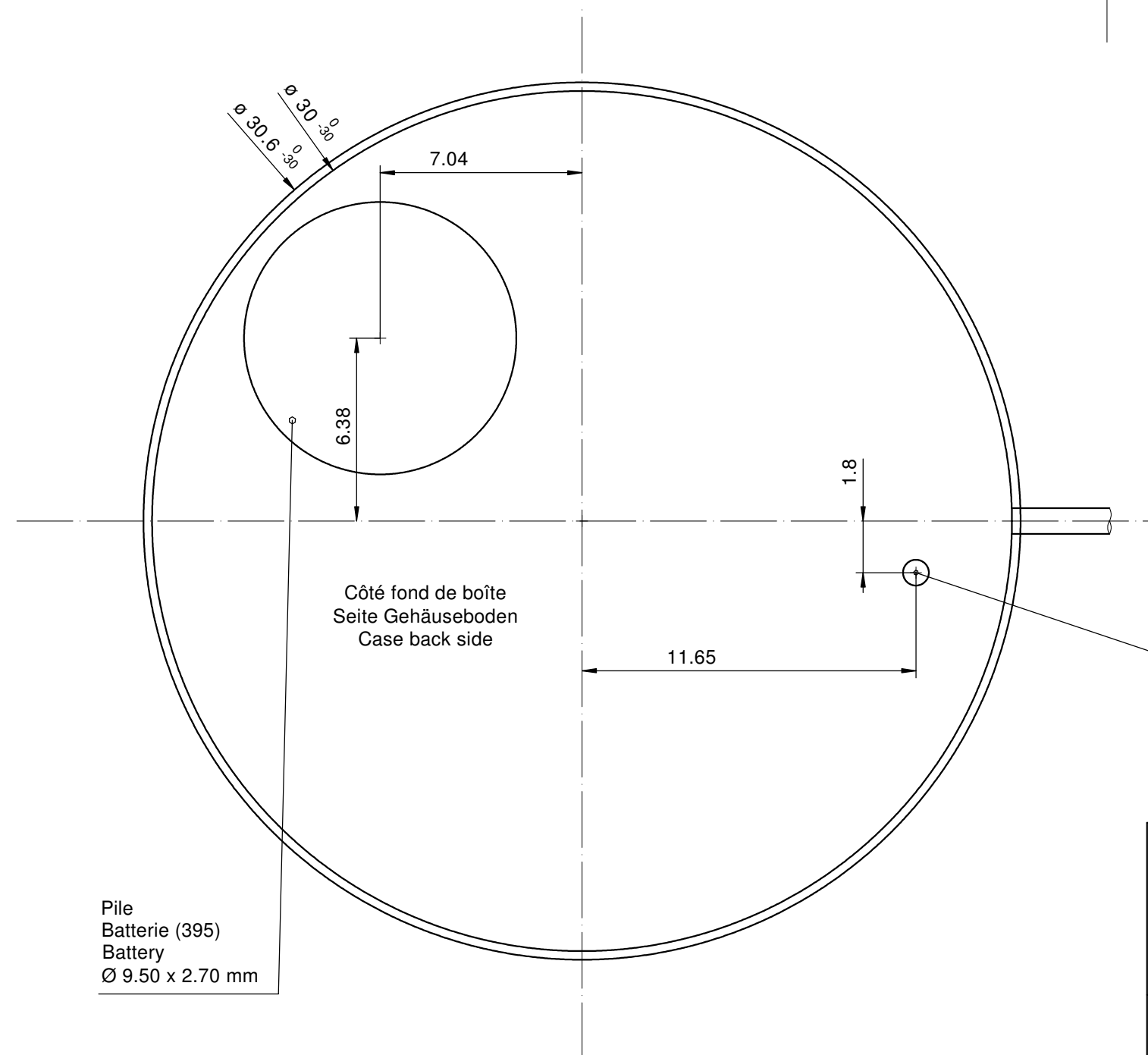
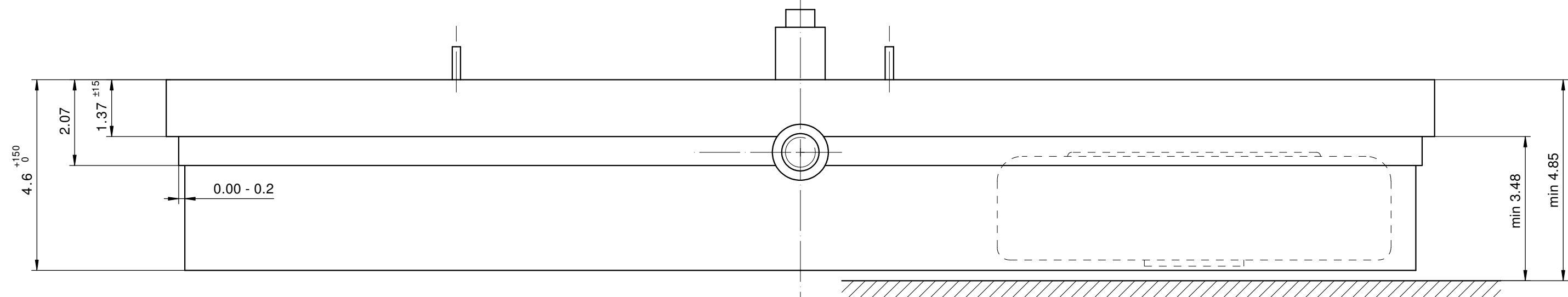
技术规格

机芯直径	30.60 mm
内罩座位直径	30.00 mm
机芯厚度	4.60 mm
电池以上厚度	4.60 mm
机芯座位	1.37 mm
把中	1.75 mm
把心行程	1.00 mm
把心螺纹直径	0.90 mm
秒针运行扭力 - 一般情况下	6 μ Nm
分针运行扭力 - 一般情况下	300 μ Nm
运作温度	0 - 50 °C
误差率	-10 / +20 秒/月
防磁度	18.8 Oe
防震度	NIHS 91-10

电池规格

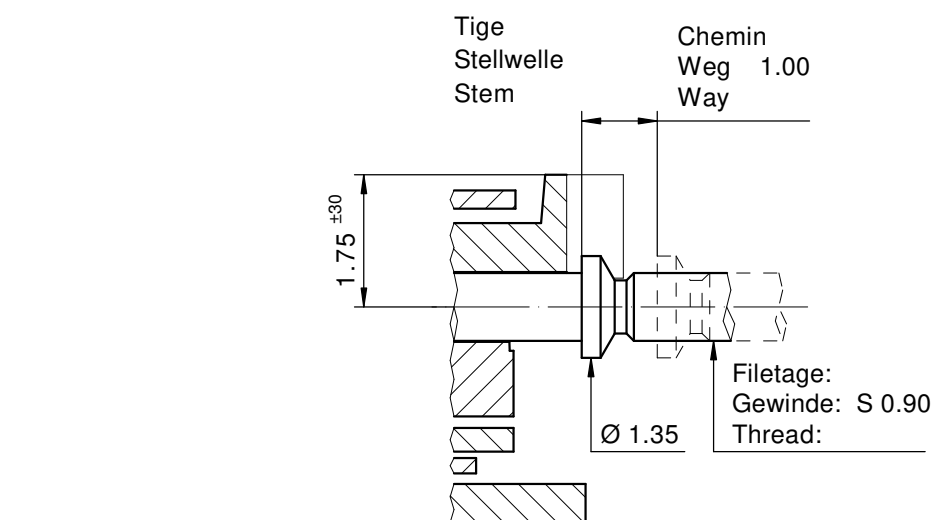
电池类型	型号 395
电池寿命	60 月
电压	1.5 V
电耗 - 一般情况下	1.42 μ A (日历不在跳动当中)
电耗 - 上限	3 μ A (日历不在跳动当中)





Côté fond de boîte
Seite Gehäuseboden
Case back side

Pile
Batterie (395)
Battery
Ø 9.50 x 2.70 mm



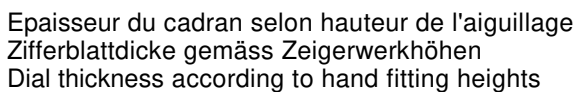
Position pour extraire la tige
Position zum Entfernen der Stellwelle
Position to remove the stem

Sécurité entre l'aiguille des seconde et le verre:
Sicherheit zwischen Sekundenzeiger und Glas: min. 0.50 mm
Security between second hand and glass:

Cage
Uhrwerkgestell 13¼"
Frame

RONDA X20, X30

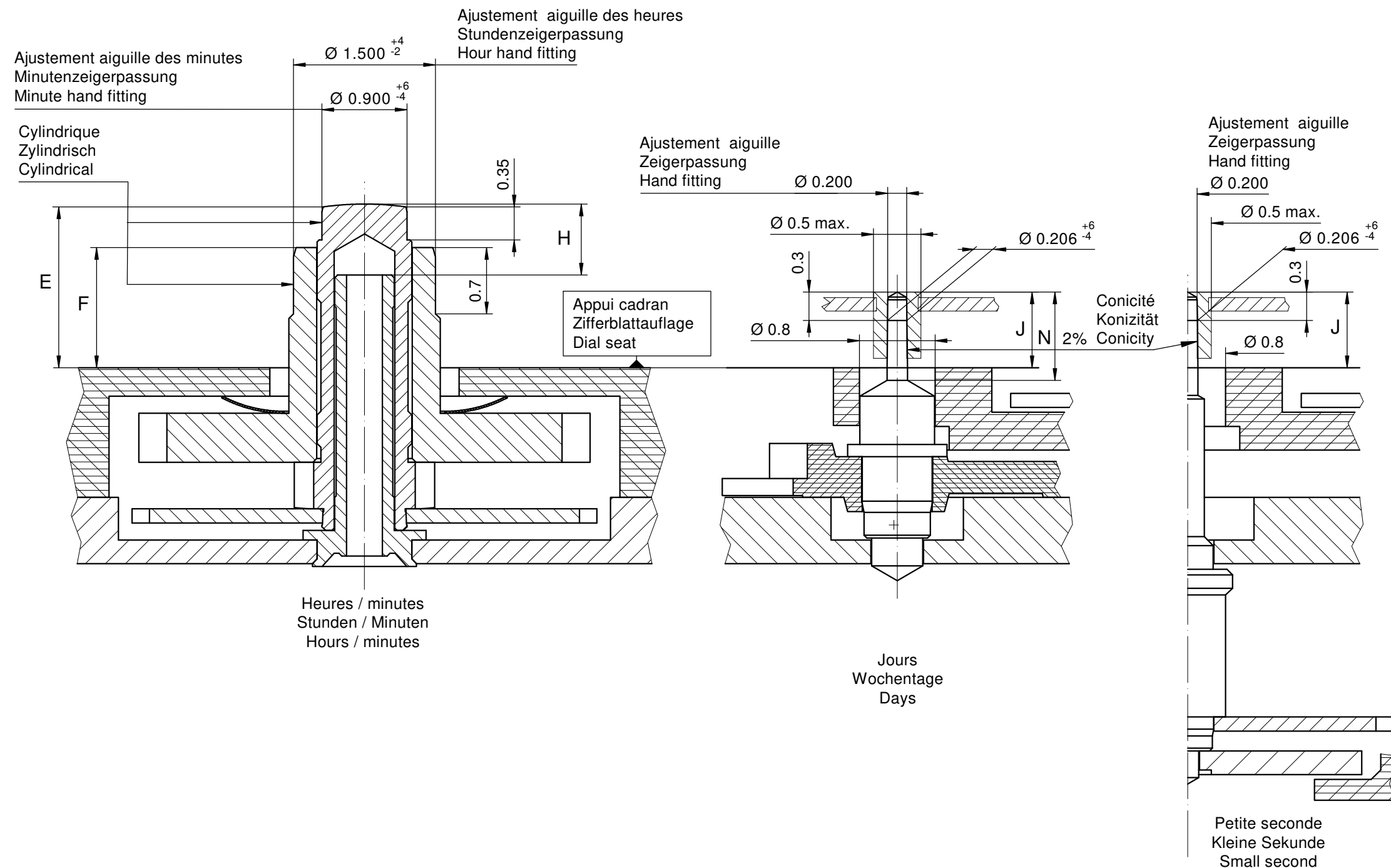
Issued	04.11.2010	mg5227
Modified	04.08.2019	jk5228
Released	YES	
Mod. No.	41339	
Tolerance	±20 µm	
Scale	10 : 1	Page 1/1 A3
Sous réserve de modifications Änderungen vorbehalten Modifications reserved		
No.	5000.408	01



Cadran
Zifferblatt 13¼"
Dial

RONDA X 20

No.	5010.842	00
-----	----------	----



		Aig. des minutes Minutenzeiger Minute hand	Aig. des heures Stundenzeiger Hour hand	Aig. petite secondes Kleine Sekundenzeiger Small second hand	Aig. des jours Tagesanzeiger Day hand	Lors de la pose d'aiguilles, le mouvement doit être soutenu. Beim Zeigersetzen muss das Werk abgestützt werden. The movement needs to be supported for hand setting.
mg	max.	30	30	10	10	Masse / Masse / Weight *
µNm	max.	0.70	0.70	0.06	0.06	Balourd / Unwucht / Unbalance *
gmm ²	max.	-	-	0.4	1.0	Inertie / Massenträgheit / Inertia *
N	max.	40	40	30	30	Force de chassage / Aufpresskraft / Force

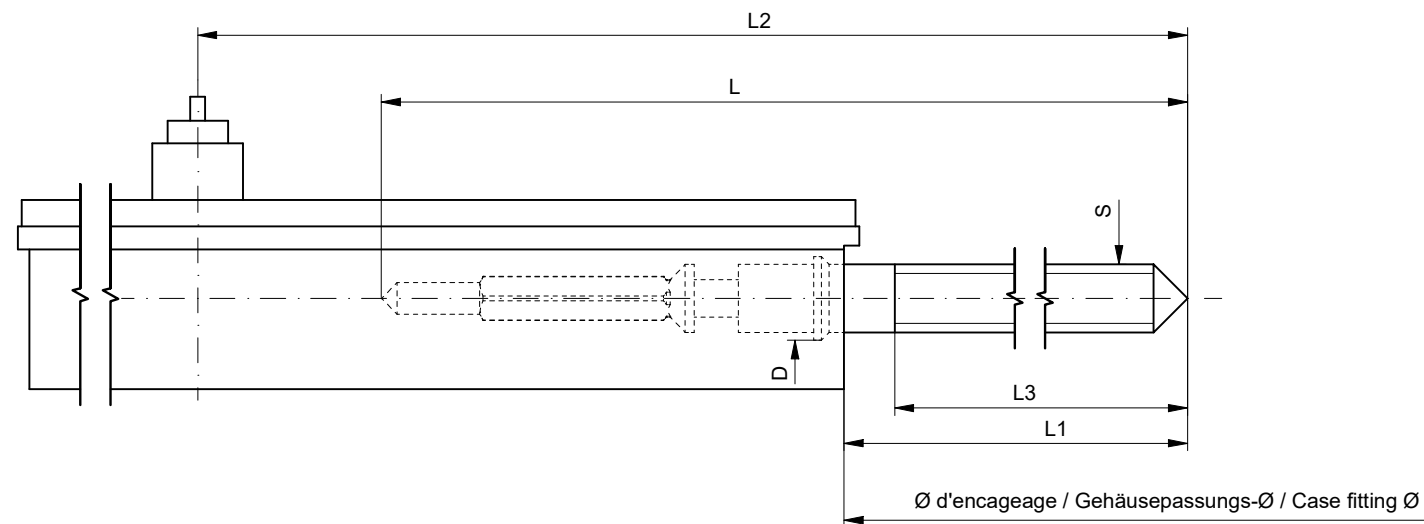
Aiguillages Zeigerwerkhöhe Hand fitting height					
Dépassement Höhe über Zifferblattaufgabe Height over dial seat					
	Chaussée Minutenrohr Cannon-pinion	Roue des heures Stundenrad Hour wheel	Petite seconde Kleine Sekunde Small second	Pignon des jours Tagesanzeigetrieb Day pinion	
No	E	F	H	J	N
1	1.70	1.25	1.30	0.80	0.80

Aiguillages Zeigerwerkhöhe Hand fitting height					
Peinture compr. / inkl. Farbe / Paint incl.					
Epaisseur maximum du cadran Maximale Zifferblattstärke Maximum dial thickness					
No	Sous l'aiguille des minutes Unter Minutenzeiger Under minute hand	Sous l'aiguille des heures Unter Stundenzeiger Under hour hand	Sous l'aiguille de petite seconde Unter kleine Sekundenzeiger Under small second hand	Sous l'aiguille des jours Unter Tageszeiger Under days hand	Epaisseur des aiguilles Zeigerdicke Hands thickness
1	1.30	0.85	0.40	0.40	0.15

Aiguillages Zeigerwerkhöhen 13¼" Hand fitting heights

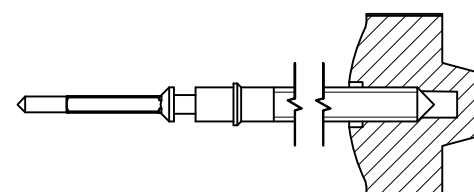
RONDA X 20

Issued	02.09.2019	jk5228
Modified	03.09.2019	jk5228
Released	YES	
Mod. No.	41339	
Tolerance	µm	
Scale	10 : 1	Page 1/1 A3
Sous réserve de modifications Änderungen vorbehalten Modifications reserved		
No.	3316.188	00



Tige de travail (intégrée dans le mouvement)
Arbeitsstellwelle (im Werk eingebaut)
Working stem (implemented in the movement)

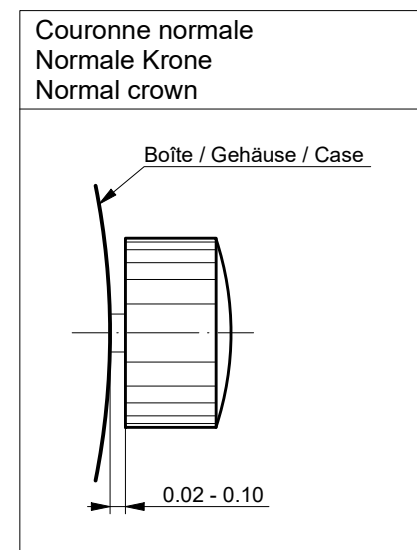
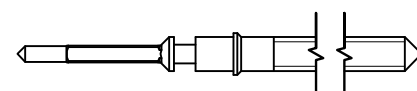
No. d'article Artikelnummer Part number	L	L1	L2	L3	S	D
3000.208.CO	21.85	11.15	26.15	10.85	0.90	1.35



Couleur de la couronne Kronenfarbe Crown color	jaune foncé dunkelgelb dark yellow
Code	UN 1509

Tige (normale) / Stellwelle (normal) / Stem (normal)

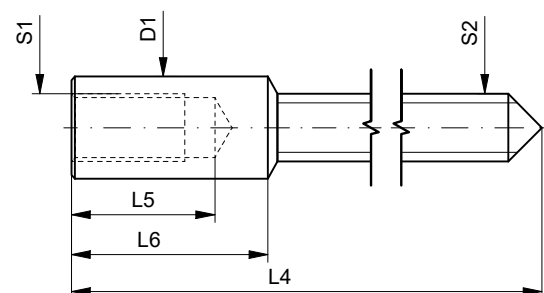
No. d'article Artikelnummer Part number	L	L1	L2	L3	S	D
3000.208	21.85	11.15	26.15	10.85	0.90	1.35



Couronne vissée Geschraubte Krone Screwed crown	
Force ⇄ min. Kraft ⇄ min. Force ⇄ min.	10 N
Force ⇄ max. Kraft ⇄ max. Force ⇄ max.	15 N

Rallonge de tige / Stellwelle Verlängerung / Stem extension

No. d'article Artikelnummer Part number	L4	L5 (min)	L6	S1	S2	D1
3000.040	12.00	1.90	2.60	0.90	0.90	1.35



Tige (dimensions / forces)
Stellwelle (Dimensionen / Kräfte)
Stem (dimensions / forces)

RONDA Z60, Z50, X30, X20

Issued	11.02.2013	f15223
Modified	03.09.2019	jk5228
Released	YES	
Mod. No.	41339	
Tolerance	---	
Scale	---	Page 1 / 1 A3
Sous réserve de modifications Änderungen vorbehalten Modifications reserved		
No.	5030.026	04



Movement holder
Removing setting stem
H ZXX.1T



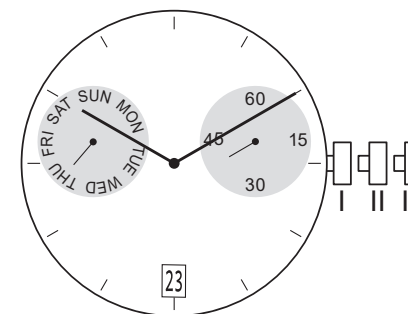
Movement holder
Setting hands
H ZXX.2A

Fitting dial and hands

- Crown in position III
- Wind hour hand forward, until date changes
- Remove working hands
- Fit dial
- Place the hands of the hour, minute and second towards 12 o'clock
- Set the hands forward towards 1:30 a.m.
- Set hand of the weekday at 12 o'clock
- Wind hands forward to set actual day of the week and time
- Crown in position II
- Set date
- Crown in position I

Date switching duration:

~1¼hrs



General Instructions

Removing the setting stem can only be effected in Pos. I.

The use of supporting screws at pos. 3h and in the centre is essential when mounting the hands (no support possible at 9h!).

Permitted hand setting strengths:

Hr / min. hands: <40N

Other hands: <30N

During quick date correction (setting stem in position II), a date switching speed of 5 d/s must not be exceeded.

Complement for T2 instructions

It might be possible that the date jump will not be finalized when the date is set manually. In that case the movement will be adjusted automatically at the next date jump.

朗达 超值系列 - 机芯型号 X20 / X30

中文使用手册

瑞士朗达是一个机芯供应商, 没有参与制造或分销成本。

若有任何手表相关之疑问, 如维修、保证期内投诉或手表功能问题, 请联络手表零售商、服务中心或制造商。所有联络资料可向您的销售员查询或参考保证文件。

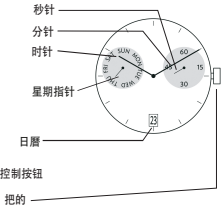
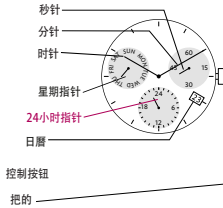
显示和控制按钮描述

显示项目

X30

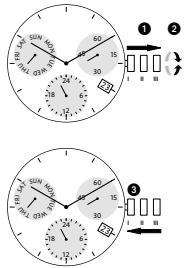
显示项目

X20



01

设定时间



- 1* 把的拉至位置 III (腕表停止运行).
- 2 转动把的至正确时间
- 3* 推把的回位置 I

注意:
* 为了设定准确的秒数,
① 当秒针指向 60, 拉把, 设定完小时及分钟后, ② 必须在正确的秒数将把的推回位置 I

02



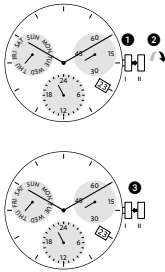
电池种类: 395 / SR 927 SW
误差规格: +20 / -10 秒 (每月)

01/2020



03

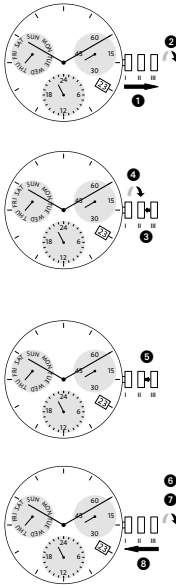
设定日期 (快速模式)



- 1 把的拉至位置 II (腕表继续运行).
- 2 转动把的至正确日期
- 3 推把的回位置 I

注意:
9:45 PM至12 AM为日历转换时段, 若在这时段内设定日期, 必须比正确日期多转一天。

设定日期 / 星期 / 时间








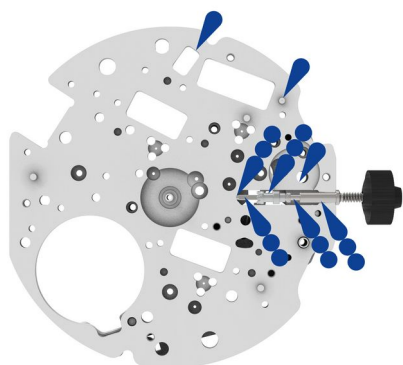
- 1 把的拉至位置 III (腕表停止运行).
- 2 转动把的至昨日星期
- 3 把的拉至位置 II
- 4 转动把的至昨日日期
- 5* 把的拉至位置 III (腕表停止运行).
- 6 逆时针转动把的至正确日期及星期日期
- 7** 继续转动把的至正确时间
- 8 将把的推回位置 I




注意:
* 为了设定至准确的秒数
请参阅节录。设定时间。
** 请注意腕表上的 AM/PM 模式

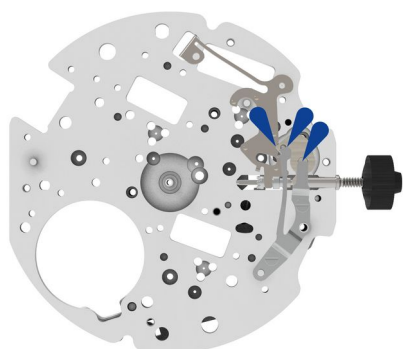
04









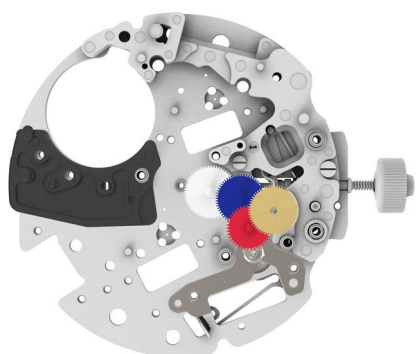
- | | | | |
|---|---|----------|--------------------------|
| 1 |  | 2000.709 | Main plate |
| 2 |  | 3016.034 | Stop lever |
| 3 |  | 3603.098 | Electronic modul support |
| 4 |  | 4000.248 | Screw |
| 5 |  | 4000.343 | Screw |





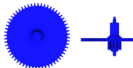
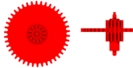



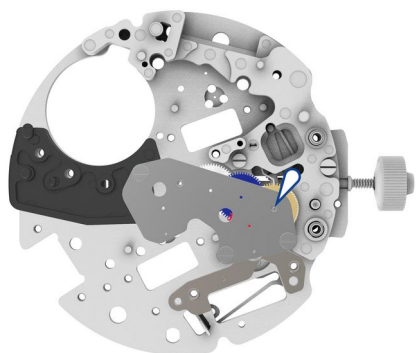
- | | | | |
|---|---|-------------|-----------------------------|
| 6 |  | 3001.072.FI | Sliding pinion |
| 7 |  | 3000.208.CO | Working stem (dual) |
| 8 |  | 8200 / 9020 | Moebius 8200 / Moebius 9020 |








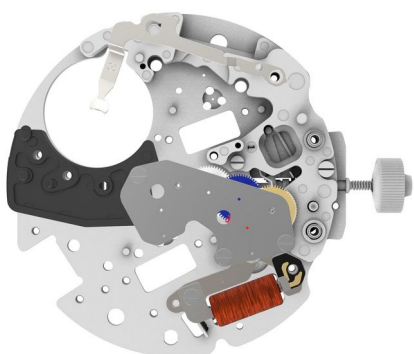
- | | | | |
|----|---|-------------|----------------------|
| 9 |  | 3015.095 | Yoke |
| 10 |  | 3017.064.CO | Setting lever |
| 11 |  | 3905.083 | Setting lever jumper |
| 12 |  | 4000.342 | Screw |
| 13 |  | 4000.342 | Screw |
| 14 |  | 8200 | Moebius 8200 |






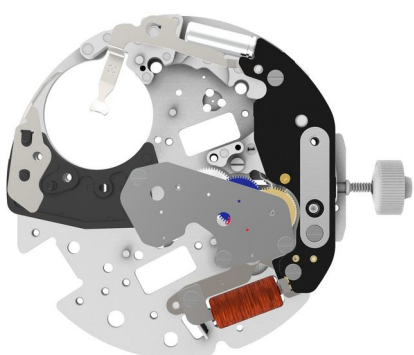
15		3603.099	Battery support
16		3622.070	Stator
17		3715.132.RK	Rotor
18		3122.072	Third wheel
19		3136.214	Second wheel (Aig.)
20		3147.089	Intermediate wheel
21		3136.216.CO	Small second wheel (Aig.)


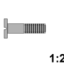
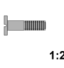





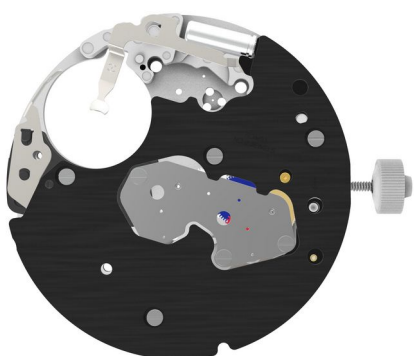
22		2020.210.M01.X20	Train wheel bridge
23		4000.248	Screw
24		4000.248	Screw
25		4000.248	Screw
26		9014	Moebius 9014



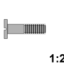
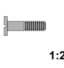



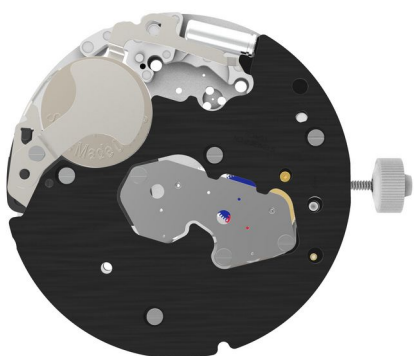
- | | | | |
|---|---|-------------|----------|
| 27 |  | 3601.153 | Bridle - |
| 28 |  | 3621.078.RK | Coil |
| Attention: Please hold the coil only on the grey coil core. | | | |
| 29 |  | 4000.248 | Screw |




- | | | | |
|----|---|-------------|-------------------------|
| 30 |  | 3612.236.RK | Electronic module |
| 31 | 
1:2 | 4000.341 | Screw |
| 32 | 
1:2 | 4000.341 | Screw |
| 33 |  | 4000.248 | Screw |
| 34 |  | 2130.233 | Setting mechanism cover |
| 35 |  | 3601.154 | Lateral bridle |




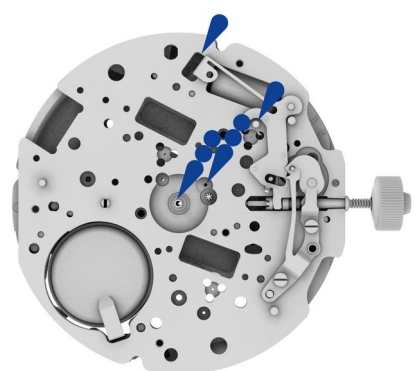
- | | | | |
|----|--|----------|-------------------------|
| 36 |  | 2130.230 | Electronic module cover |
| 37 |  | 4000.248 | Screw |
| 38 | 
1:2 | 4000.341 | Screw |
| 39 | 
1:2 | 4000.341 | Screw |
| 40 | 
1:2 | 4000.341 | Screw |





41  3600.010.HGF Battery 395 (Ø 9.50 x 2.70)

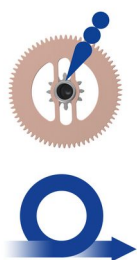
42  3601.152 Bridle +

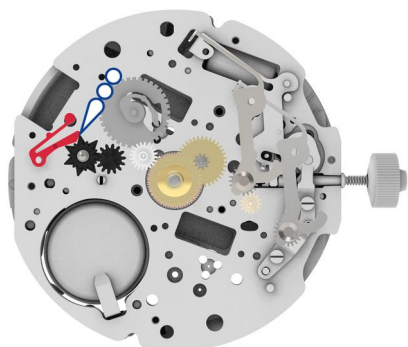
43  4000.341 Screw





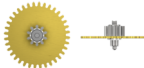



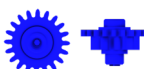






44  8200 / 9020 Moebius 8200 / Moebius 9020




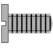

45  9020 Moebius 9020









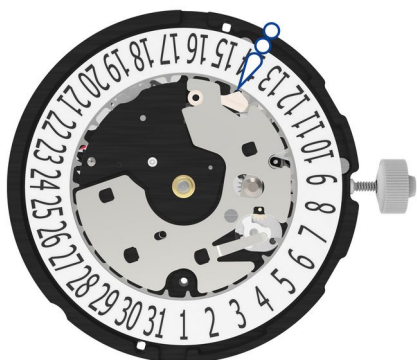
46		3015.096.CO	Setting lever yoke
47		3004.245	Date setting wheel
48		3015.096.CO	Setting lever yoke
49		3305.371.CO	Cannon pinion (Aig.)
50		3007.092.CO	Minute wheel
51		3301.332.TA	Hour wheel (Aig.)
52		3315.003	Friction spring
53		3004.264	Date indicator driving wheel
54		3147.091	Intermediate date wheel
55		3004.247	Days driving wheel
56		3401.087.CO	Day wheel
57		3500.082	Day jumper
58		I-4	Moebius I-4






59		2130.231	Setting mechanism cover
60		4000.248	Screw
61		4000.248	Screw
62		4000.248	Screw
63		4000.248	Screw

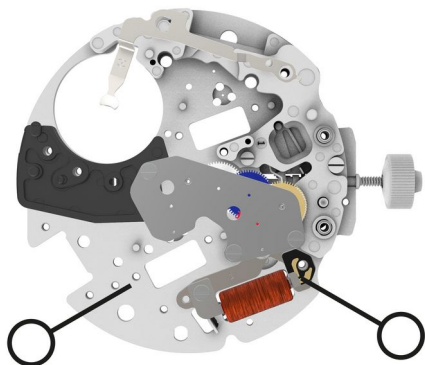


64		3504.243.AP.3.A	Datumanzeiger (T3/G6)
65		3507.067	Date corrector
66		3500.081	Date jumper
67		3905.084	Date jumper spring

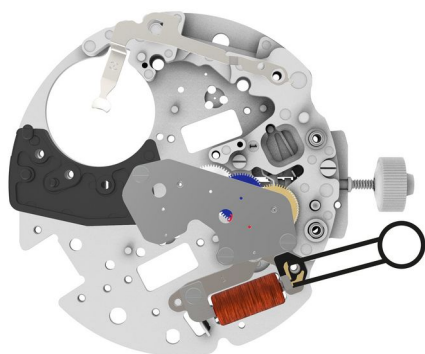


68		2130.229	Date mechanism maintaining plate
69		4000.343	Screw
70		I-4	Moebius I-4

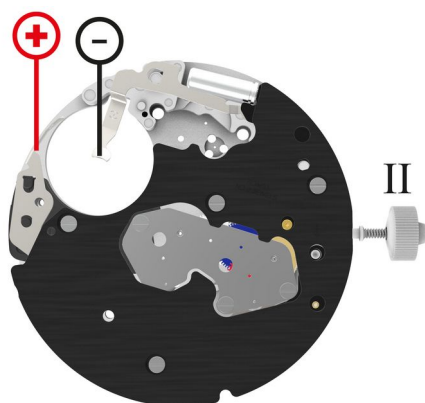
Measurement



Coil insulation
infinite

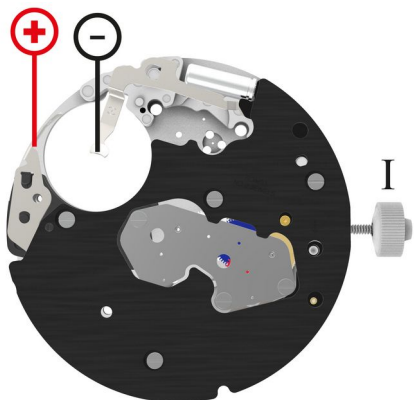


Coil resistance movement
(min./max.) 1500 - 1700 Ohm



Setting stem in position III, 60 s measuring interval.
(typ./max.) 0.10 / 0.30 μ A

Lower working voltage limit
<1.20 V



Setting stem in position I, calendar not in gear, 60s measuring interval.

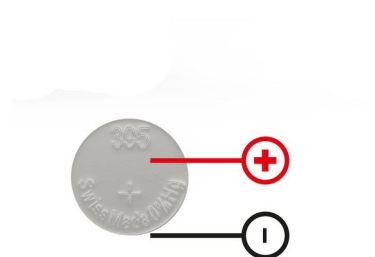
(typ./max.) 1.42 / 3.00 μ A

Lower working voltage limit

<1.20 V

60s measuring interval

-10 .. +20s/mth



Voltage

typ. 1.5 V