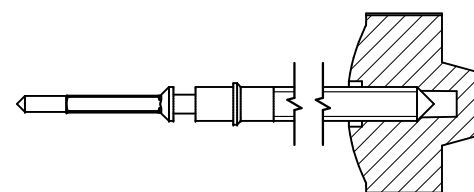


Tige de travail (intégrée dans le mouvement)
 Arbeitstellwelle (im Werk eingebaut)
 Working stem (implemented in the movement)

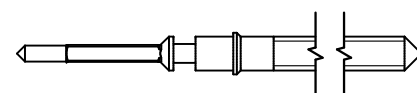
| No. d'article Artikelnummer Part number | L | L1 | L2 | L3 | S | D |
|---|-------|-------|-------|-------|------|------|
| 3000.214.CO | 18.34 | 10.75 | 23.75 | 10.50 | 0.90 | 1.20 |



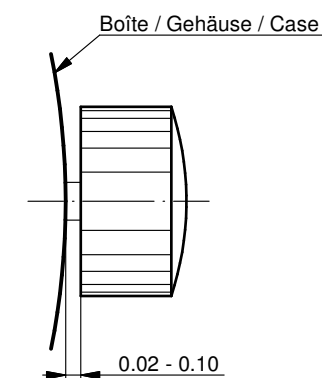
| | |
|--|--|
| Couleur de la couronne Kronenfarbe Crown color | gris froid kühles grau cool grey |
| Code | UN 7049 |

Tige (normale) / Stellwelle (normal) / Stem (normal)

| No. d'article Artikelnummer Part number | L | L1 | L2 | L3 | S | D |
|---|-------|-------|-------|-------|------|------|
| 3000.214 | 18.34 | 10.75 | 23.75 | 10.50 | 0.90 | 1.20 |



Couronne normale
 Normale Krone
 Normal crown

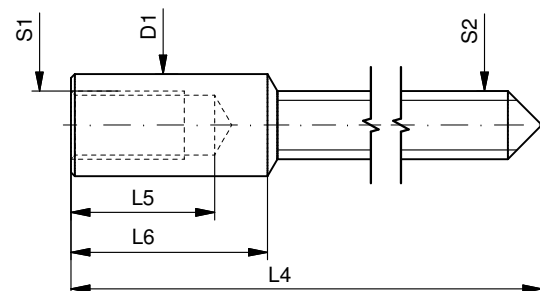


Couronne vissée
 Geschraubte Krone
 Screwed crown

| | |
|--|------|
| Force ⇐ min. Kraft ⇐ min. Force ⇐ min. | 10 N |
| Force ⇐ max. Kraft ⇐ max. Force ⇐ max. | 15 N |

Rallonge de tige / Stellwelle Verlängerung / Stem extension

| No. d'article Artikelnummer Part number | L4 | L5 (min) | L6 | S1 | S2 | D1 |
|---|-------|-------------|------|------|------|------|
| 3000.040 | 12.00 | 1.90 | 2.60 | 0.90 | 0.90 | 1.35 |



Tige (dimensions / forces)
 Stellwelle (Dimensionen / Kräfte)
 Stem (dimensions / forces)

RONDA R150

| | | |
|-----------|-------------------------|--------|
| Issued | 10.12.2013 | mk5225 |
| Modified | 17 Mär 2017 ÄA 34582 | mg5224 |
| Released | YES | |
| Tolerance | --- | |
| Scale | 10:1 (A3) | |

Sous réserve de modifications
 Änderungen vorbehalten
 Modifications reserved

| | | |
|-----|----------|----|
| No. | 5030.042 | 02 |
|-----|----------|----|