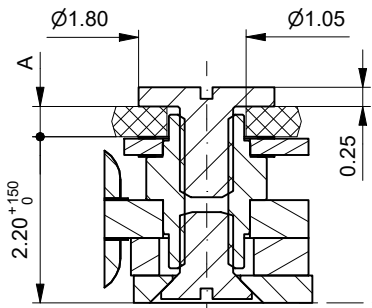
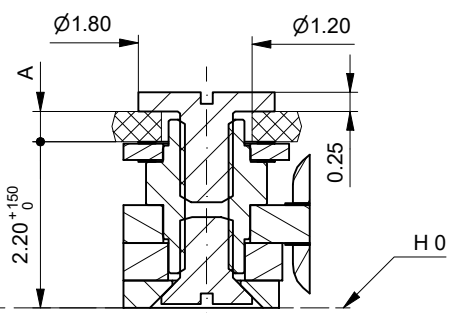


A-A (10 : 1)
pos. 19 + 22

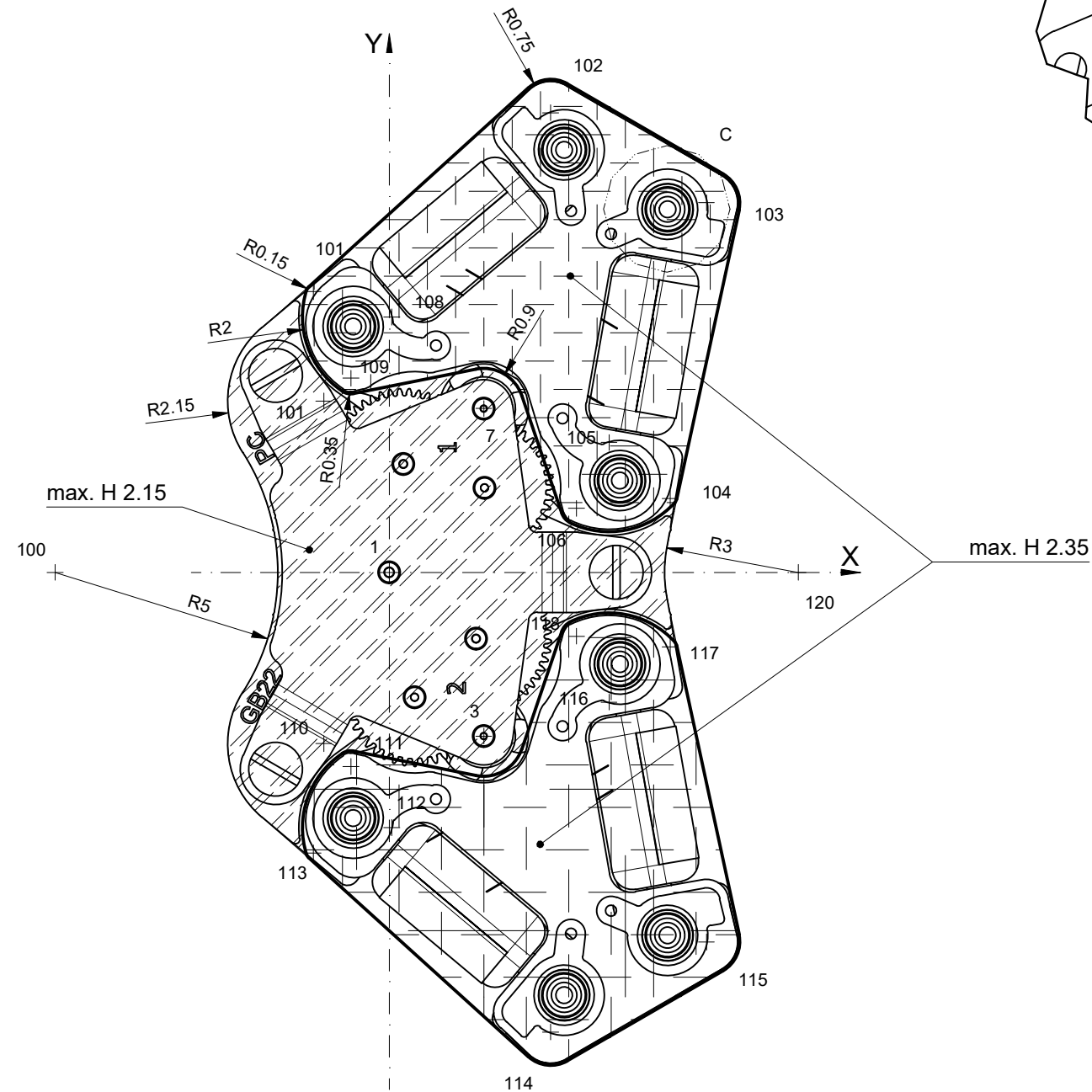
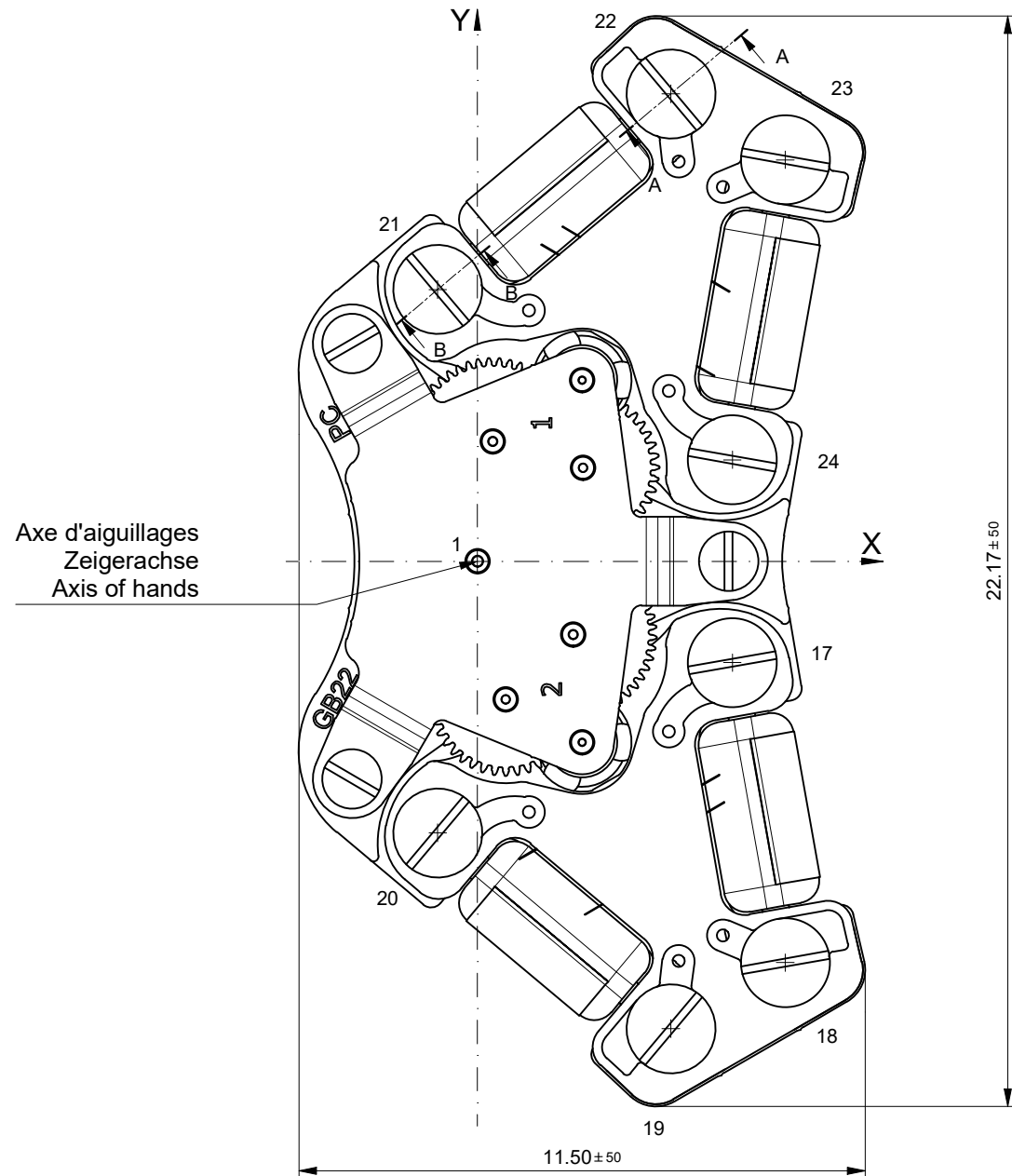
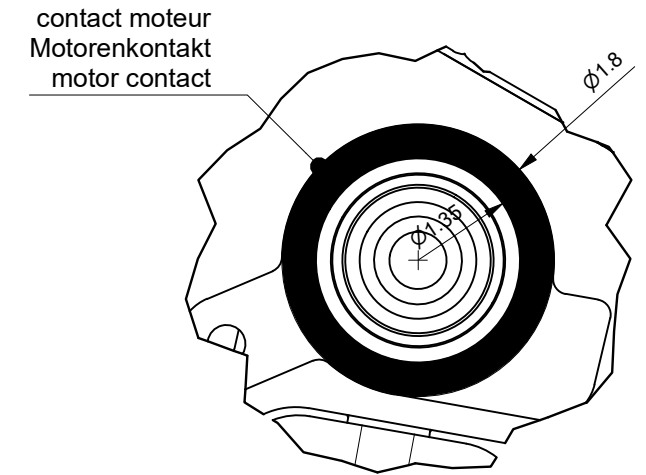


B-B (10 : 1)
pos. 17, 18, 20, 21, 23, 24



Epaisseur de module électronique A Dicke des Elektronikmoduls A Electronic modul thickness A	Vis Schraube Screw
0.4	4000.378

C (20 : 1)
pos. 17-24



pos.	X	Y
1	0.000	0.000
3	2.122	-3.675
7	2.122	3.675
100	-7.500	0.000
101	-1.705	6.298
101	-1.471	3.844
102	3.622	10.314
103	7.121	8.294
104	6.304	1.654
105	4.934	2.913
106	4.203	1.434
108	0.056	5.730
109	-0.860	4.357
110	-1.471	-3.844
111	-0.860	-4.357
112	0.056	-5.730
113	-1.705	-6.298
114	3.622	-10.314
115	7.121	-8.294
116	4.934	-2.913
117	6.307	-1.673
118	4.203	-1.434
120	9.180	0.000

pos.	X	Y
1	0.000	0.000
19	3.928	-9.484
18	6.249	-8.144
17	5.177	-2.058
20	-0.806	-5.512
21	-0.806	5.512
22	3.928	9.484
23	6.249	8.144
24	5.177	2.058

Cage
Uhrwerkgestell
Frame

RONDA GB22

Issued	04.06.2019	f15223
Modified	23.11.2020	f15223
Released	YES	
Mod. No.	400041	
Tolerance	±20 µm	
Scale	7 : 1	Page 1 / 1 A3

Sous réserve de modifications
Aenderungen vorbehalten
Modifications reserved

No.	5000.444	01
-----	----------	----