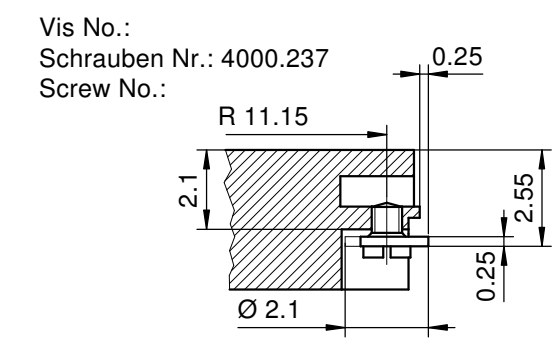
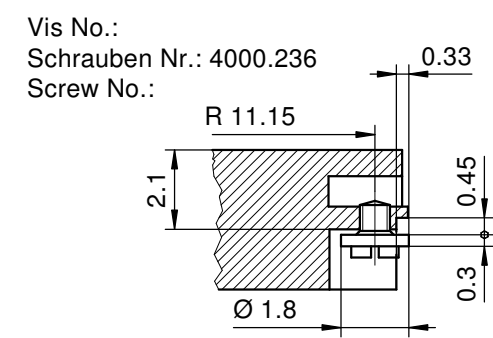
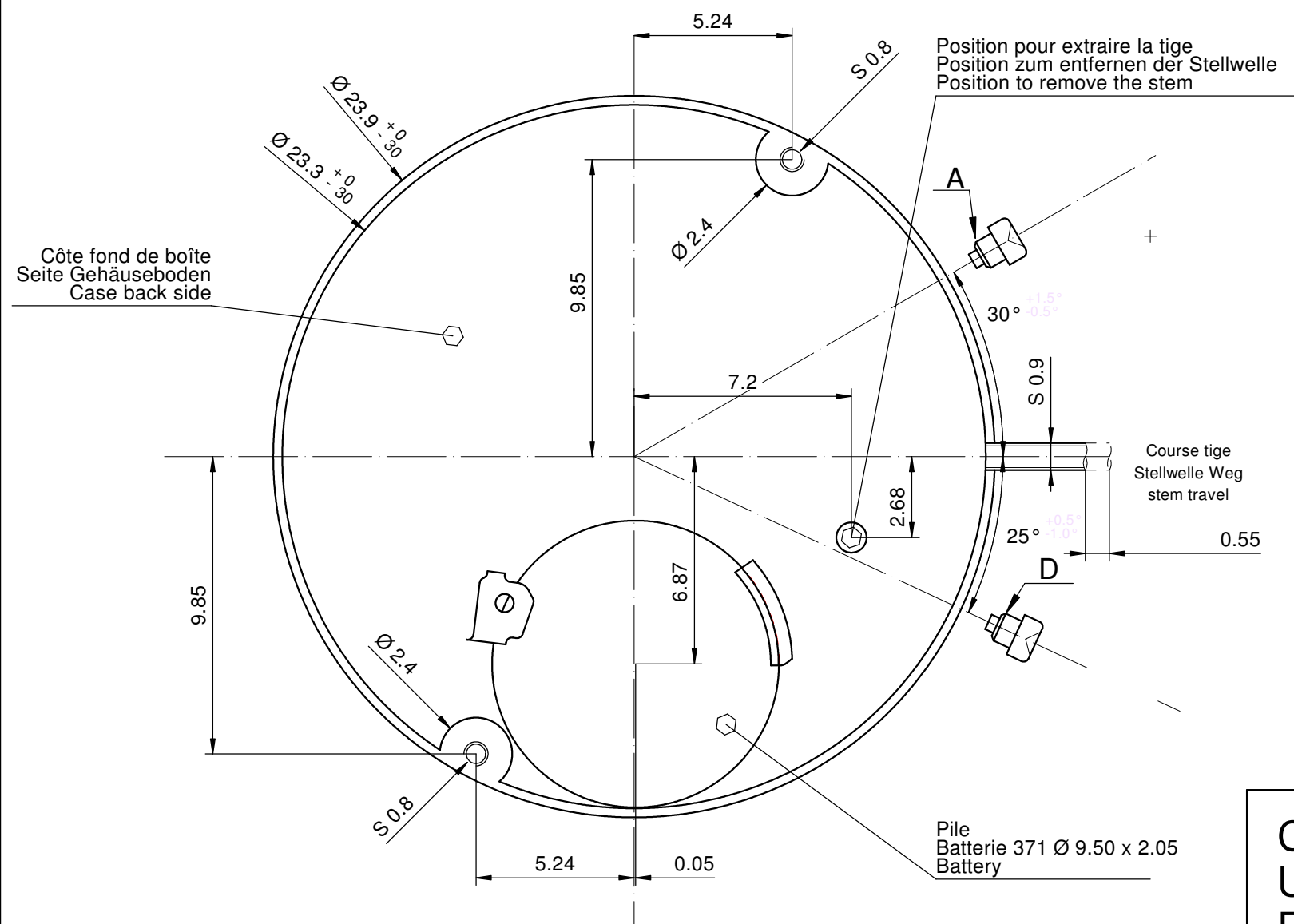
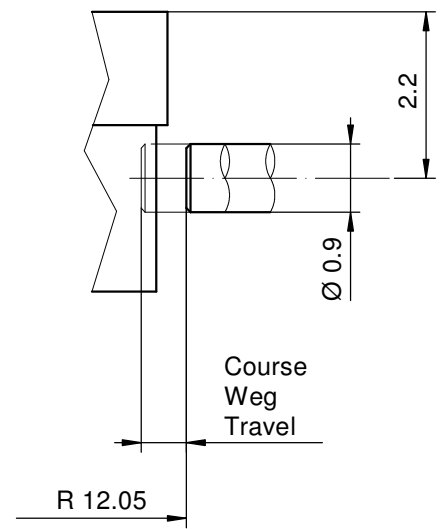
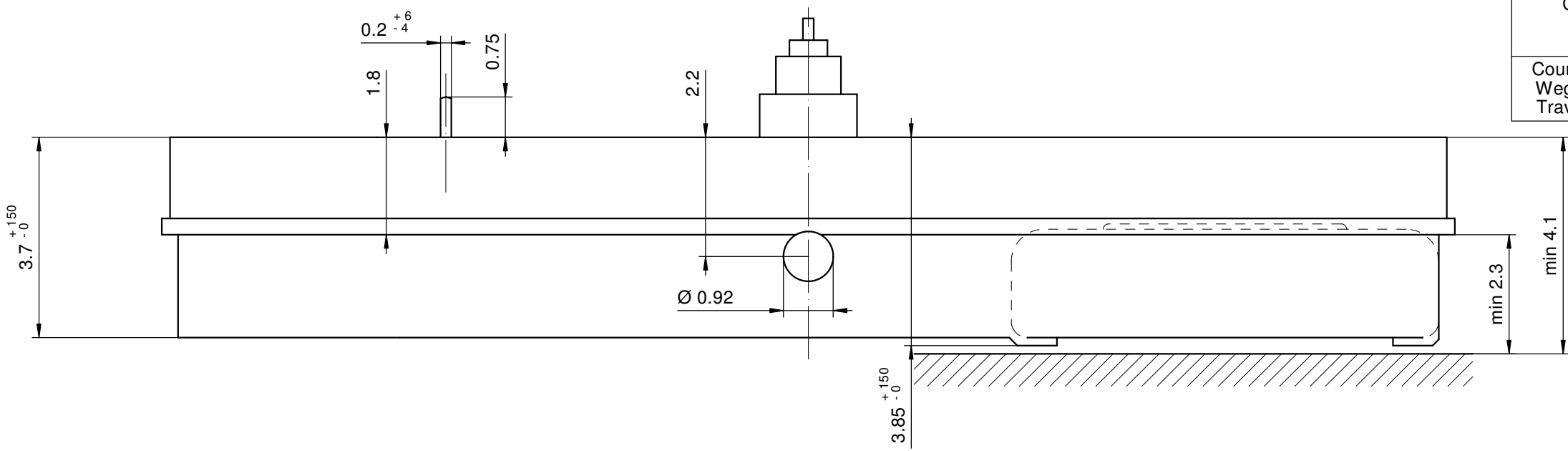


Correcteur Korrektor Corrector	A	D
Course + Sécurité Weg + Sicherheit Travel + Security	0.80 + 0.15	0.60 + 0.10



Sécurité entre l'aiguille des seconde et le verre : min 0.30 mm
 Sicherheit zwischen Sekundenzeiger und Glas : min 0.30 mm
 Security between second hand and glass : min 0.30 mm

Le cadran doit être tenu par la boîte.
 Das Zifferblatt muss durch die Schale gehalten werden.
 The dial must be hold by the case.

Cage Uhrwerkgestell 10½" Frame	Issued	19.05.1988	ks
	Modified	24.05.2017	mg5224
RONDA 706B	Released	YES	
	Mod. No.	34583	
	Tolerance	±20 µm	
	Scale	10 : 1	Page 1/1 A3
Sous réserve de modifications Aenderungen vorbehalten Modifications reserved			
No.	5000.255	14	