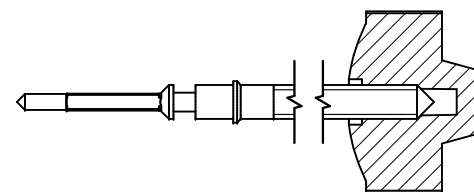


Tige de travail (intégrée dans le mouvement)
 Arbeitstellwelle (im Werk eingebaut)
 Working stem (implemented in the movement)

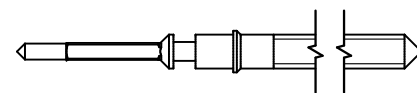
No. d'article Artikelnummer Part number	L	L1	L2	L3	S	D
3000.189.CO	19.30	10.57	23.37	10.15	0.90	1.10



Couleur de la couronne Kronenfarbe Crown color	marron kastanienbraun chestnut
Code	UN 8018

Tige (normale) / Stellwelle (normal) / Stem (normal)

No. d'article Artikelnummer Part number	L	L1	L2	L3	S	D
3000.189	19.30	10.57	23.37	10.15	0.90	1.10
3000.199	25.00	16.27	29.07	15.85	0.90	1.10



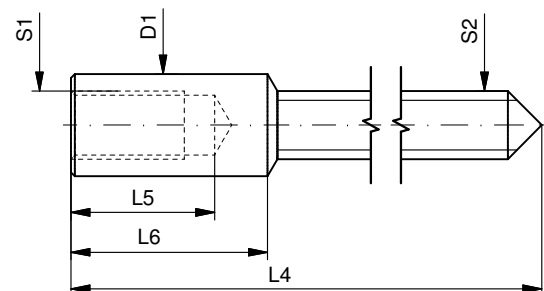
Couronne normale
 Normale Krone
 Normal crown

Couronne vissée
 Geschraubte Krone
 Screwed crown

Force ⇐ min. Kraft ⇐ min. Force ⇐ min.	10 N
Force ⇐ max. Kraft ⇐ max. Force ⇐ max.	15 N

Rallonge de tige / Stellwelle Verlängerung / Stem extension

No. d'article Artikelnummer Part number	L4	L5 (min)	L6	S1	S2	D1
3000.040	12.00	1.90	2.60	0.90	0.90	1.35



Tige Stellwelle Stem	(dimensions / forces) (Dimensionen / Kräfte) (dimensions / forces)		
	RONDA	6003.B, 6003.D, 6004.B, 6004.D	
	Issued	06 Sep 2012	ds5222
	Modified	17 Mär 2017 ÄA 34582	mg5224
	Released	YES	
Tolerance		---	
Scale		10:1 (A3)	
Sous réserve de modifications Änderungen vorbehalten Modifications reserved			
No.	5030.021	01	