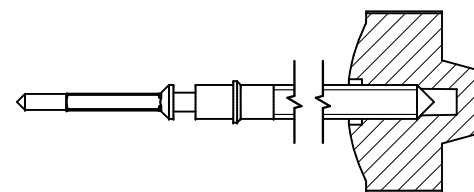


Tige de travail (intégrée dans le mouvement)
 Arbeitstellwelle (im Werk eingebaut)
 Working stem (implemented in the movement)

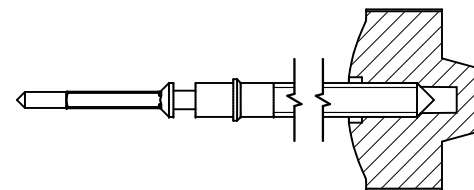
No. d'article Artikelnummer Part number	L	L1	L2	L3	S	D
3000.189.CO	19.30	10.57	23.37	10.15	0.90	1.10



Couleur de la couronne Kronenfarbe Crown color	marron kastanienbraun chestnut
Code	UN 8018

Tige de travail dual (intégrée dans le mouvement)
 Arbeitstellwelle dual (im Werk eingebaut)
 Working stem dual (implemented in the movement)

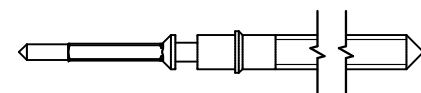
No. d'article Artikelnummer Part number	L	L1	L2	L3	S	D
3000.190.CO	18.23	10.63	23.43	10.15	0.90	1.10



Couleur de la couronne Kronenfarbe Crown color	caramel caramel karamel
Code	UN 8035

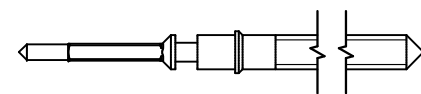
Tige (normale) / Stellwelle (normal) / Stem (normal)

No. d'article Artikelnummer Part number	L	L1	L2	L3	S	D
3000.189	19.30	10.57	23.37	10.15	0.90	1.10
3000.199	25.00	16.27	29.07	15.85	0.90	1.10



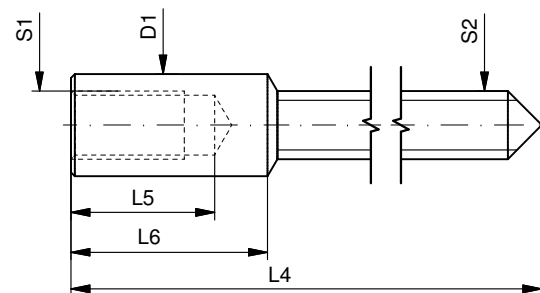
Tige dual (normale) / Stellwelle dual (normal) / Stem dual (normal)

No. d'article Artikelnummer Part number	L	L1	L2	L3	S	D
3000.190	18.23	10.63	23.43	10.15	0.90	1.10
3000.200	25.00	17.40	30.20	16.92	0.90	1.10

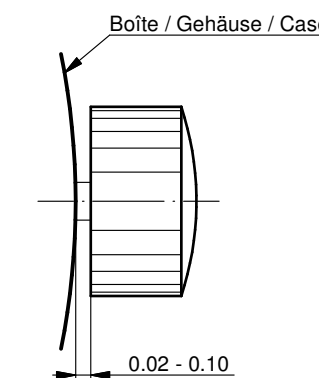


Rallonge de tige / Stellwelle Verlängerung / Stem extension

No. d'article Artikelnummer Part number	L4	L5 (min)	L6	S1	S2	D1
3000.040	12.00	1.90	2.60	0.90	0.90	1.35



Couronne normale
 Normale Krone
 Normal crown



Couronne vissée
 Geschraubte Krone
 Screwed crown

Force ⇐ min. Kraft ⇐ min. Force ⇐ min.	10 N
Force ⇐ max. Kraft ⇐ max. Force ⇐ max.	15 N

Tige Stellwelle Stem	(dimensions / forces)		Issued	06 Sep 2012	ds5222
	(Dimensionen / Kräfte)		Modified	17 Mär 2017	mg5224
	(dimensions / forces)		Released	ÄA 34582	
			Tolerance	YES	
			Scale	---	10:1 (A3)
RONDA	6203.B	Sous réserve de modifications Änderungen vorbehalten Modifications reserved			
		No.	5030.020		01